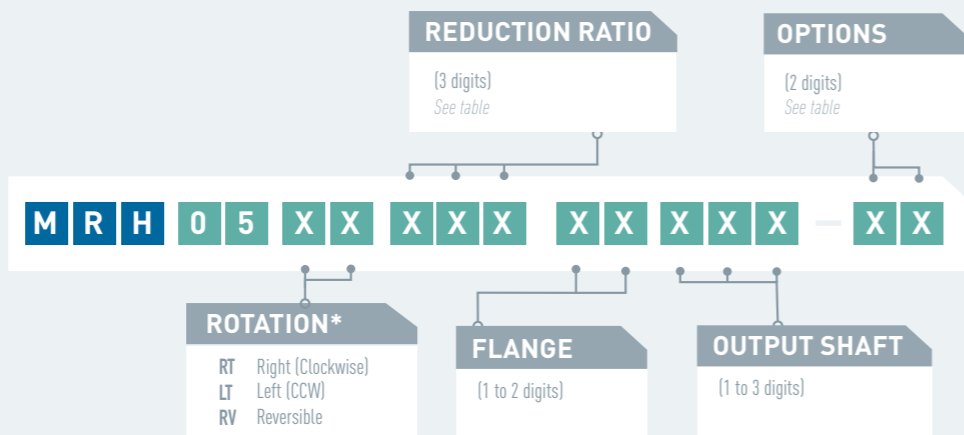


MOTOR MRH 05

POWER 270 W

MRH 05



* rotation direction is defined when looking from the back of the motor

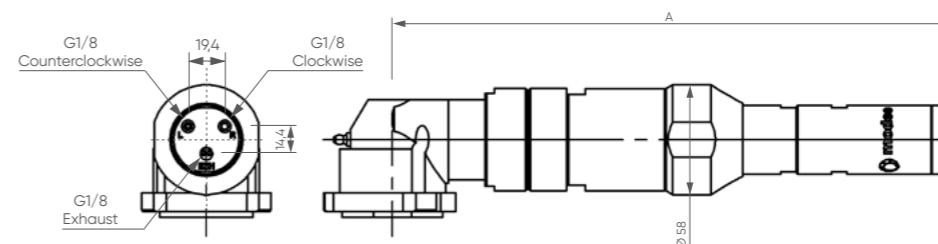
OPTIONS AVAILABLE FOR THIS MOTOR

Collected exhaust*	▶	▶	▶	▶	▶
ATEX certification		▶		▶	▶
Lubrication free			▶	▶	
Kit start			▶		
Code	01	07	09	10	21 22

* Exhaust is always collected on "05" series air motors

LAYOUT

MRH 05



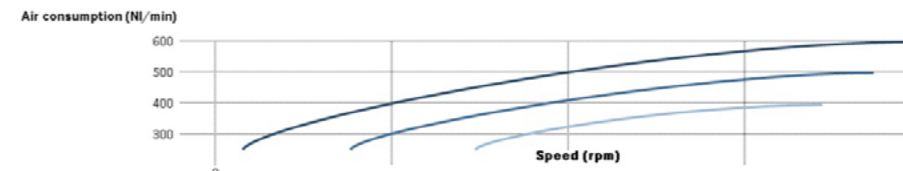
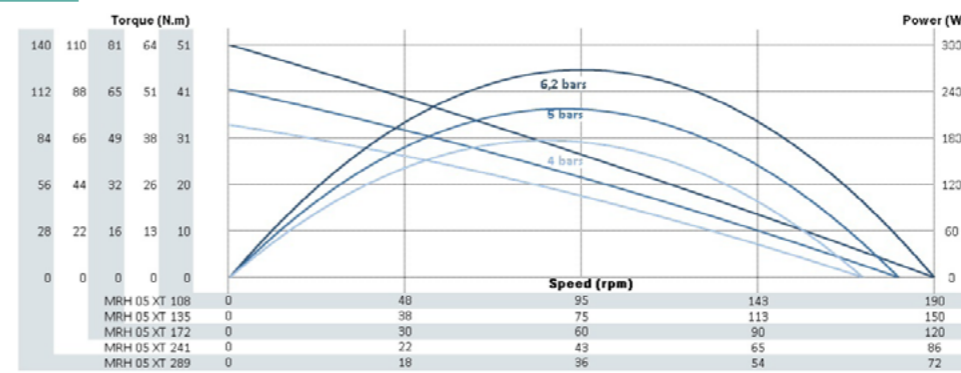
PERFORMANCES

MRH 05 XT	Air motor reference	Reduction ratio	Air supply pressure	Speed (rpm)		Torque (N.m)			Max Power (W)	Air cons (NI/min)	Dimensions		
				@ max Power	Free	@ max Power	Max (stall)	Starting torque			A (mm)	Ø (mm)	Weight (kg)
MRH 05 XT 108	108	6,2 bars	95	193	27	51	45	271	500	271,3	58	2,6	
			90	183	23	41	36	217	400				
			85	172	20	33	29	177	300				
MRH 05 XT 135	135	6,2 bars	76	154	34	64	56	271	500	295,3	58	2,9	
			72	146	29	52	45	217	400				
			68	138	25	42	37	177	300				
MRH 05 XT 172	172	6,2 bars	60	121	43	81	72	271	500	295,3	58	2,9	
			56	114	37	66	58	217	400				
			53	108	32	53	47	177	300				
MRH 05 XT 241	241	6,2 bars	42	86	61	114	100	271	500	295,3	58	2,9	
			40	82	52	92	81	217	400				
			38	77	45	75	66	177	300				
MRH 05 XT 289	289	6,2 bars	35	72	73	137	120	271	500	295,3	58	2,9	
			34	68	62	111	97	217	400				
			32	64	54	90	79	177	300				
MRH 05 RV	Air motor reference	Reduction ratio	Air supply pressure	Speed (rpm)		Torque (N.m)			Max Power (W)	Air cons (NI/min)	Dimensions		
				@ max Power	Free	@ max Power	Max (stall)	Starting torque			A (mm)	Ø (mm)	Weight (kg)
MRH 05 RV 108	108	6,2 bars	90	177	28	48	30	268	500	271,3	58	2,6	
			85	170	24	39	24	214	400				
			82	163	20	31	19	174	300				
MRH 05 RV 135	135	6,2 bars	72	142	36	61	38	268	500	295,3	58	2,9	
			68	136	30	48	30	214	400				
			66	130	25	39	24	174	300				
MRH 05 RV 172	172	6,2 bars	56	111	45	77	48	268	500	295,3	58	2,9	
			53	106	38	62	38	214	400				
			52	102	32	50	31	174	300				
MRH 05 RV 241	241	6,2 bars	40	79	64	109	67	268	500	295,3	58	2,9	
			38	76	54	86	54	214	400				
			37	73	45	70	44	174	300				
MRH 05 RV 289	289	6,2 bars	34	66	76	130	81	268	500	295,3	58	2,9	
			32	63	65	104	64	214	400				
			31	61	54	84	52	174	300				

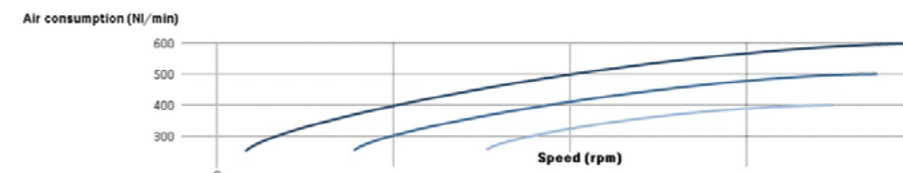
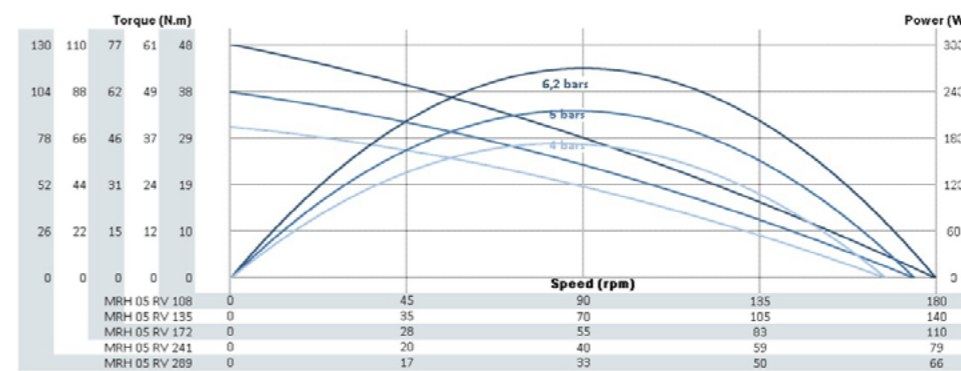
Data indicated in this table have an accuracy of +/- 5%

POWER, SPEED, TORQUE AND AIR CONSUMPTION GRAPHS

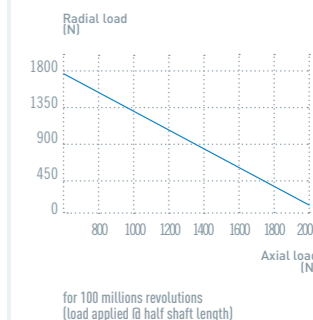
MRH 05 XT



MRH 05 RV



MAXIMUM RADIAL & AXIAL LOAD



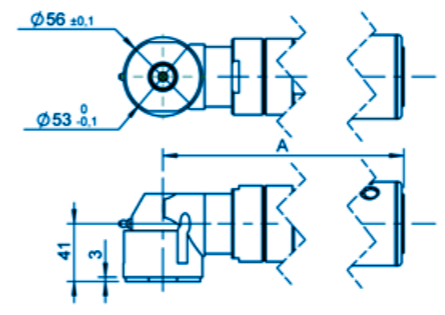
NOTES

Notes section with horizontal lines for text entry.

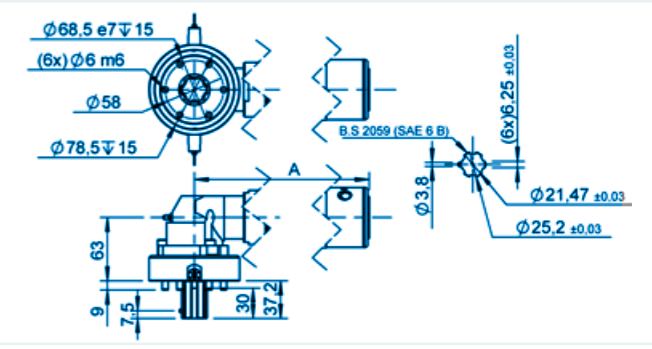
FLANGES **GROUP VII**

- XRH 05
- XRH 07
- XRS 08
- XRS 10
- XRS 20
- XRS 25

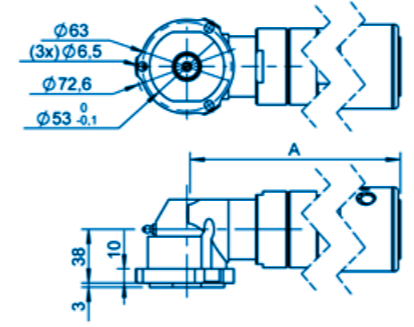
GROUP VII FLANGE AF



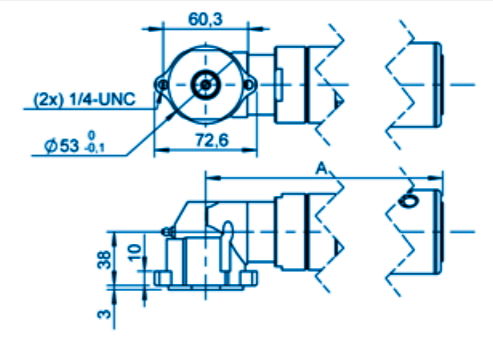
GROUP VII FLANGE AG WITH SHAFT 013



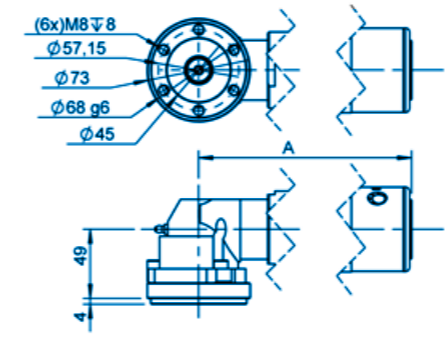
GROUP VII FLANGE B



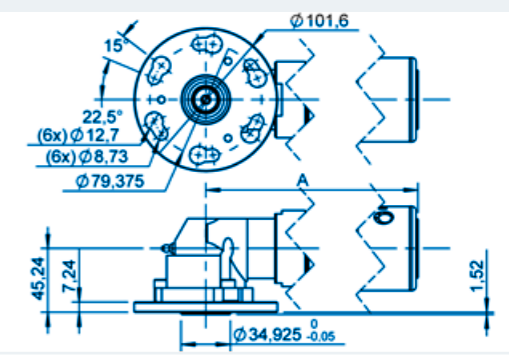
GROUP VII FLANGE E



GROUP VII FLANGE M



GROUP VII FLANGE Q



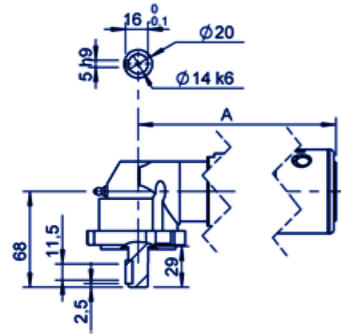
You didn't find your match ?

Contact us !

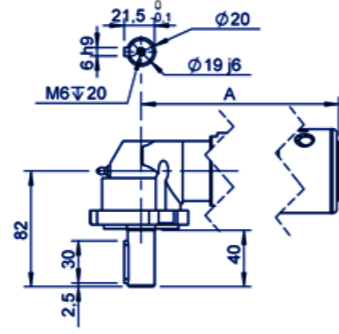
SHAFTS **GROUP VII** (1/2)

- XRH 05
- XRH 07
- XRS 08
- XRS 10
- XRS 20
- XRS 25

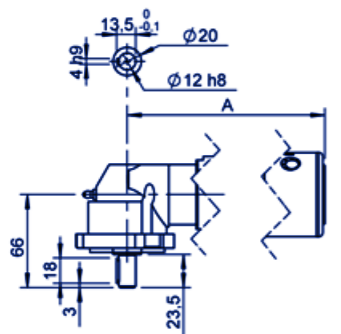
GROUP VII SHAFT 021 - KEYED Ø14



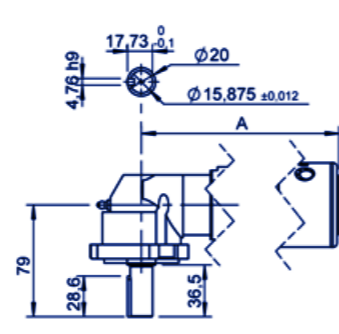
GROUP VII SHAFT C12 - KEYED Ø19



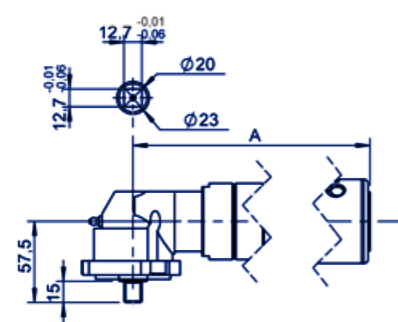
GROUP VII SHAFT C13 - KEYED Ø12



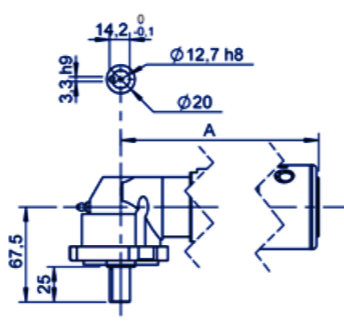
GROUP VII SHAFT C14 - KEYED Ø5/8"



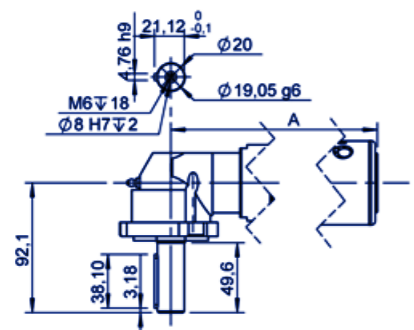
GROUP VII SHAFT CA1 - SQUARE 1/2"



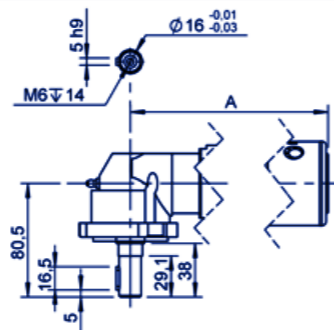
GROUP VII SHAFT CL1 - KEYED Ø1/2"



GROUP VII SHAFT CL2 - KEYED Ø3/4"



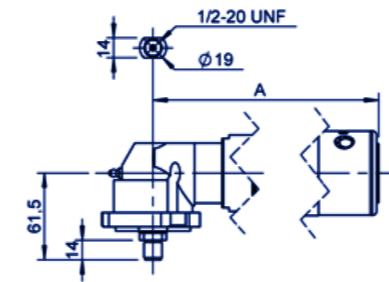
GROUP VII SHAFT CL6 - KEYED Ø16



SHAFTS **GROUP VII** (2/2)

- XRH 05
- XRH 07
- XRS 08
- XRS 10
- XRS 20
- XRS 25

GROUP VII SHAFT F11 - THREADED Ø1/2"



You didn't find your match ?

Contact us !