



MAX POWER
300 W
MAX TORQUE
370 Nm

"05" series air motors are **the lightest and most compact**.

With a 300W power in a 113 x 36,5 mm cylinder weighting half a kilogram only, **these motors fit easily in a machine**.

Like any of our motors, power and torque are easily controllable by simply adjusting air supply pressure, which allows to use them "at stall" without any additional precaution.

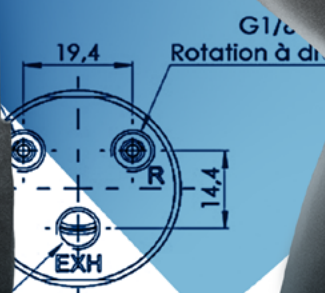
This makes them an ideal tool for cap screwing on bottling lines for example.



+ ACCESSORIES FOR THIS MOTOR	Reference
Filtration, pressure Regulation and Lubrication unit (FRL)	AC106
Safety Air Treatment Box (SAT Box)	AC118
With Pedal remote control	AC119
With handle remote control	AC120
With remote emergency kill switch	AC125
With remote E-Stop and pedal remote control	AC121
With remote E-Stop and handle remote control	AC122
Maintenance kits	
Maintenance kit for "05" series	AC300
Maintenance kit for lube free "05" series	AC310
Maintenance kit for kit start "05" series	AC320
modec Oil Co-16	AC149
Filters and silencers	
Mini metallic silencer	AC169
Metallic standard exhaust silencer	AC168
Plastic standard exhaust silencer	AC166
Heavy duty exhaust silencer	AC167
Speed control muffler	AC170
High flow air muffler	AC158
Exhaust silencer filter	AC165

CONNECTION AND LUBRICATION					
🔧	Min. fittings Ø		Min. pipe Ø		Lubrication (6,2 bars)
	In	Out	In	Out	
	5 mm / 0,2 In	5 mm / 0,2 In	6 mm / 0,2 In	6 mm / 0,2 In	2 drops / minute

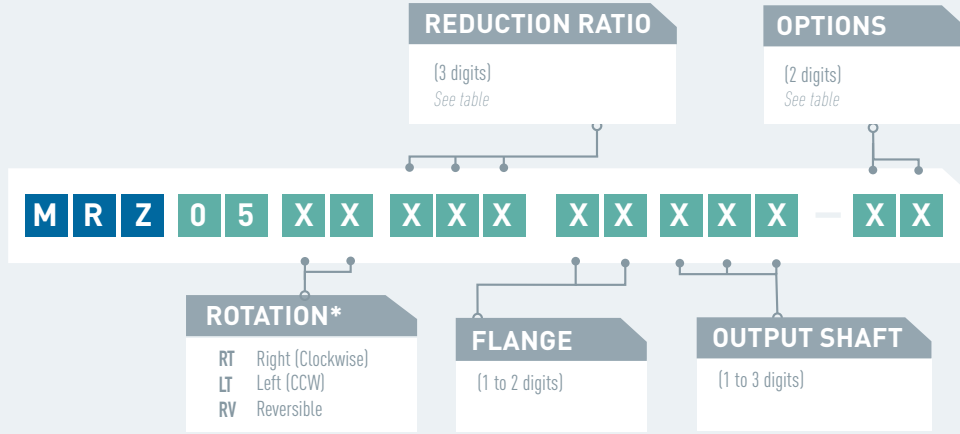
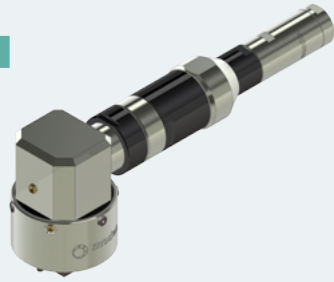
CONVERSION TABLE		
Watt ▶ Horse power	Newton meter ▶ Pound feet	Millimeter ▶ Inch
Watt x 0,001341 = hp	Nm x 0,7376 = lb.ft	mm x 0,03937 = in
Bar ▶ Pound per square Inch	Normo Liter / minute ▶ Standard cubic feet per minute	Kilogram ▶ Pound
Bar x 14,5 = psi	NL / min x 0,03531 = scfm	Kg x 2,205 = lb



MOTOR MRZ 05

POWER 270 W

MRZ 05



* rotation direction is defined when looking from the back of the motor

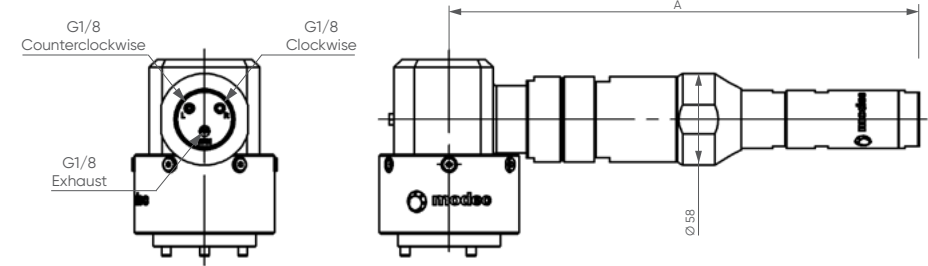
OPTIONS AVAILABLE FOR THIS MOTOR

Collected exhaust*	▶	▶	▶	▶	▶	▶
ATEX certification		▶		▶	▶	
Lubrication free			▶	▶	▶	
Kit start				▶		
Code	01	07	09	10	21	22

* Exhaust is always collected on "05" series air motors

LAYOUT

MRZ 05



PERFORMANCES

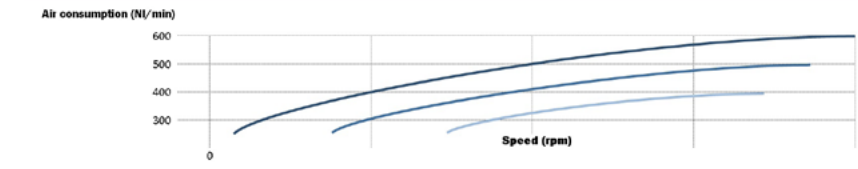
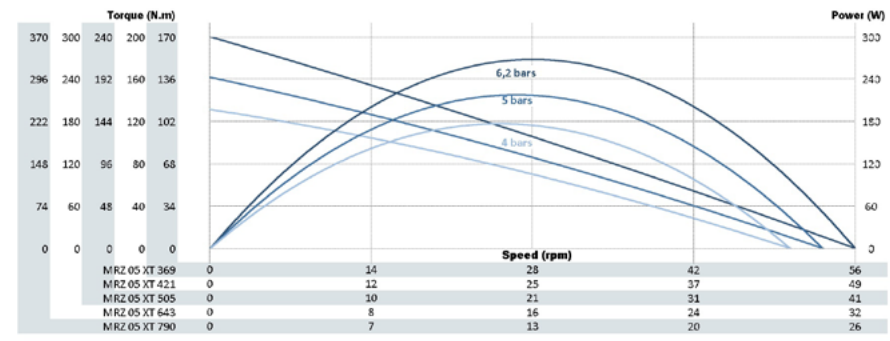
MRZ 05 XT	Air motor reference	Reduction ratio	Air supply pressure	Speed (rpm)		Torque (N.m)			Max Power (W)	Air cons (Nl/min)	Dimensions		
				@ max Power	Free	@ max Power	Max (stall)	Starting torque			A (mm)	Ø (mm)	Weight (kg)
MRZ 05 XT 369		369	6,2 bars	28	56	93	174	153	271	500	271,3	58	4,4
			5 bars	26	53	79	141	123	217	400			
			4 bars	25	50	68	114	101	177	300			
MRZ 05 XT 421		421	6,2 bars	24	49	106	199	175	271	500	295,3	58	4,4
			5 bars	23	47	90	161	141	217	400			
			4 bars	22	44	78	131	115	177	300			
MRZ 05 XT 505		505	6,2 bars	20	41	127	239	210	271	500	295,3	58	4,4
			5 bars	19	39	108	193	169	217	400			
			4 bars	18	37	93	157	138	177	300			
MRZ 05 XT 643		643	6,2 bars	16	32	162	304	268	271	500	295,3	58	4,4
			5 bars	15	31	137	246	215	217	400			
			4 bars	14	29	119	200	176	177	300			
MRZ 05 XT 790		790	6,2 bars	13	26	199	374	329	271	500	271,3	58	4,4
			5 bars	12	25	169	302	265	217	400			
			4 bars	12	24	146	245	216	177	300			

MRZ 05 RV	Air motor reference	Reduction ratio	Air supply pressure	Speed (rpm)		Torque (N.m)			Max Power (W)	Air cons (Nl/min)	Dimensions		
				@ max Power	Free	@ max Power	Max (stall)	Starting torque			A (mm)	Ø (mm)	Weight (kg)
MRZ 05 RV 369		369	6,2 bars	26	52	97	166	103	268	500	271,3	58	4,4
			5 bars	25	50	82	132	82	214	400			
			4 bars	24	48	69	107	67	174	300			
MRZ 05 RV 421		421	6,2 bars	23	45	111	190	118	268	500	295,3	58	4,4
			5 bars	22	43	94	151	94	214	400			
			4 bars	21	42	79	123	76	174	300			
MRZ 05 RV 505		505	6,2 bars	19	38	133	227	141	268	500	295,3	58	4,4
			5 bars	18	36	113	181	112	214	400			
			4 bars	18	35	95	147	91	174	300			
MRZ 05 RV 643		643	6,2 bars	15	30	169	290	180	268	500	295,3	58	4,4
			5 bars	14	28	144	230	143	214	400			
			4 bars	14	27	121	187	116	174	300			
MRZ 05 RV 790		790	6,2 bars	12	24	208	355	220	268	500	271,3	58	4,4
			5 bars	12	23	177	283	175	214	400			
			4 bars	11	22	148	230	143	174	300			

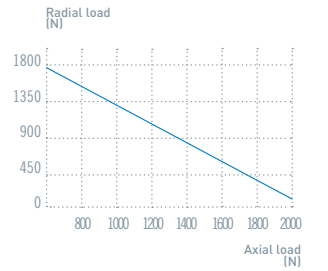
Data indicated in this table have an accuracy of +/- 5%

POWER, SPEED, TORQUE AND AIR CONSUMPTION GRAPHS

MRZ 05 XT

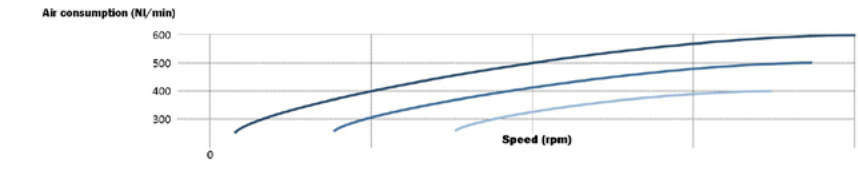
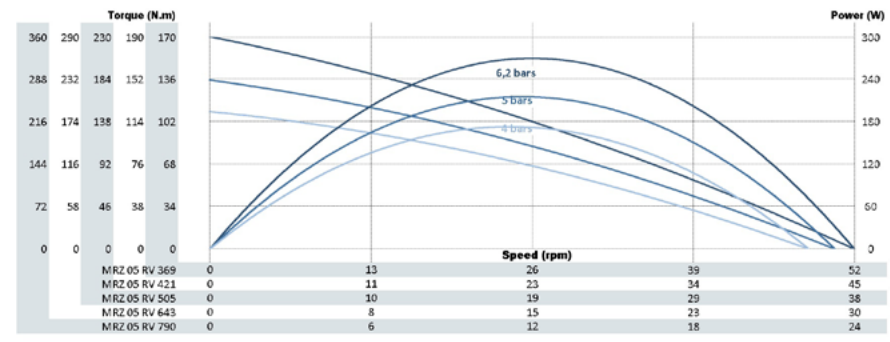


MAXIMUM RADIAL & AXIAL LOAD



for 100 millions revolutions (load applied @ half shaft length)

MRZ 05 RV



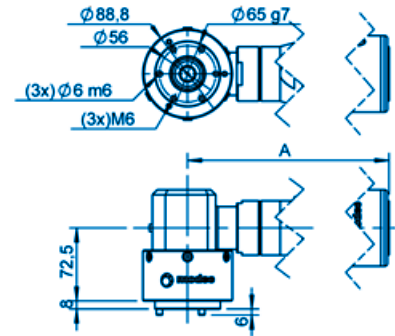
NOTES

Blank area for notes.

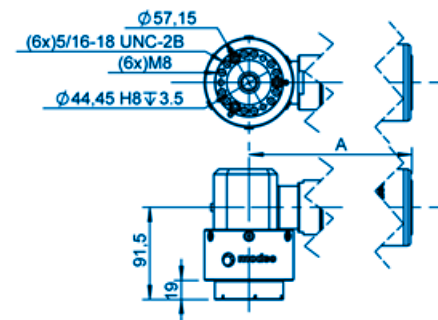
FLANGES **GROUP VIII**

- XRZ 05 XRZ 07 XRH 08 XRH 10 XRH 20 XRH 25

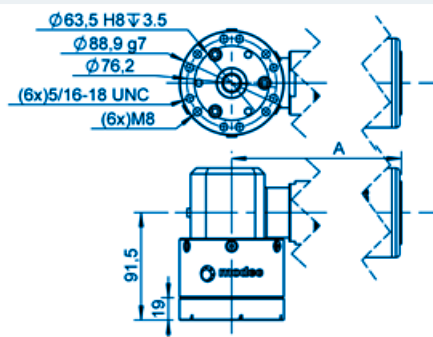
GROUP VIII FLANGE AA



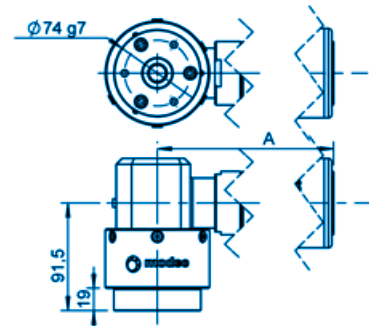
GROUP VIII FLANGE AB



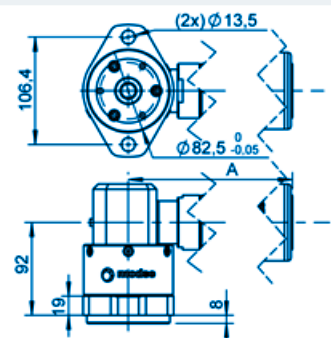
GROUP VIII FLANGE AC



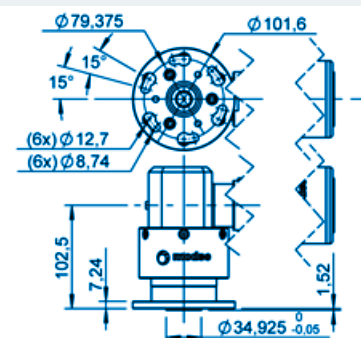
GROUP VIII FLANGE AD



GROUP VIII FLANGE AE



GROUP VIII FLANGE Q



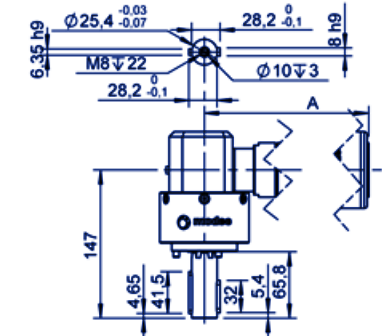
You didn't find your match ?

Contact us !

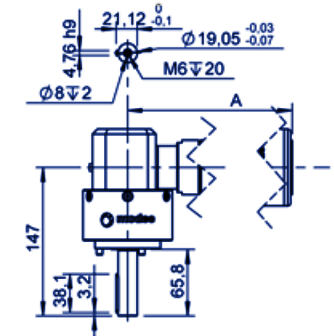
SHAFTS **GROUP VIII**

- XRZ 05 XRZ 07 XRH 08 XRH 10 XRH 20 XRH 25

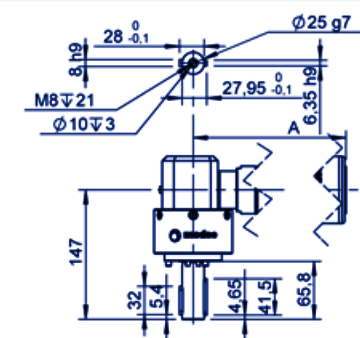
GROUP VIII SHAFT 001 - KEYED Ø1"



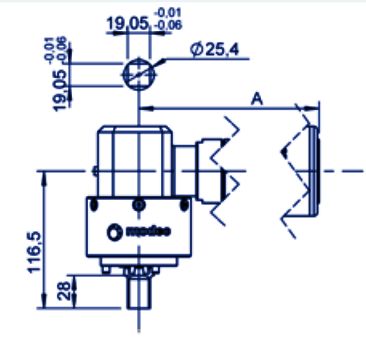
GROUP VIII SHAFT 002 - KEYED Ø3/4"



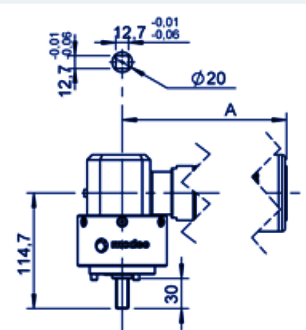
GROUP VIII SHAFT 003 - KEYED Ø25



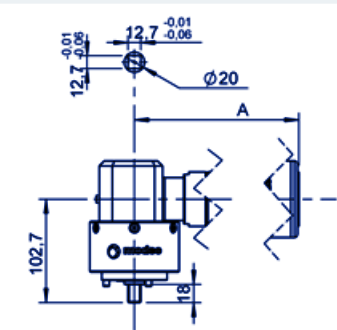
GROUP VIII SHAFT 004 - SQUARE 3/4"



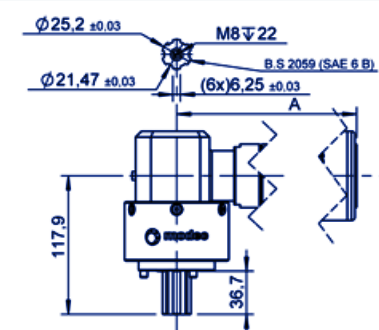
GROUP VIII SHAFT 005 - SQUARE 1/2" LONG



GROUP VIII SHAFT CA1 - SQUARE 1/2" SHORT



GROUP VIII SHAFT CNW - SPLINED



You didn't find your match ?

Contact us !