



MAX POWER
480 W
MAX TORQUE
640 Nm

"07" series air motors are **much appreciated in pharmacy, chemistry and food processing industries**. Sealed and **made of stainless steel**, they are **waterproof, resistant to corrosive products** and their exhaust is collected so that there is **no risk of pollution**.

Like any of our air motors, "07" series air motors **can be used without lubrication** on demand in order to reduce even more any risk of oil exhaust.

Although they have a minimal size and weight, they **can develop up to 480W**.



+ ACCESSORIES FOR THIS MOTOR	Reference
Filtration, pressure Regulation and Lubrication unit (FRL)	AC106
Safety Air Treatment Box (SAT Box)	AC118
With Pedal remote control	AC119
With handle remote control	AC120
With remote emergency kill switch	AC125
With remote E-Stop and pedal remote control	AC121
With remote E-Stop and handle remote control	AC122
Maintenance kits	
Maintenance kit for "07" series	AC301
Maintenance kit for lube free "07" series	AC311
Maintenance kit for kit start "07" series	AC321
modec Oil Co-16	AC149
Filters and silencers	
Metallic standard exhaust silencer	AC168
Metallic standard inlet silencer	AC180
Plastic standard exhaust silencer	AC166
Plastic standard inlet silencer	AC150
Heavy duty exhaust silencer	AC167
Heavy duty inlet silencer	AC154
Speed control muffler	AC171
High flow air muffler	AC158
Exhaust silencer filter	AC165

CONNECTION AND LUBRICATION

Min. fittings Ø	Min. pipe Ø		Lubrication [6,2 bars]
	In	Out	
5 mm / 0,2 In	7 mm / 0,3 In	6 mm / 0,2 In	3 drops / minute

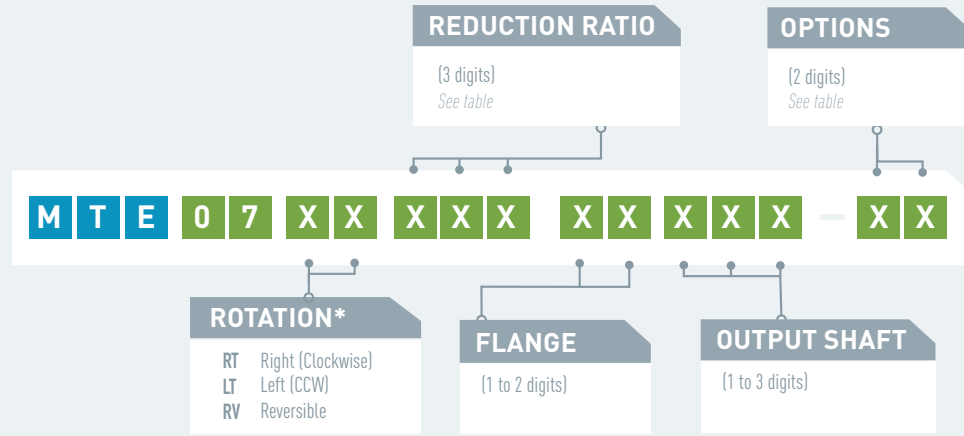
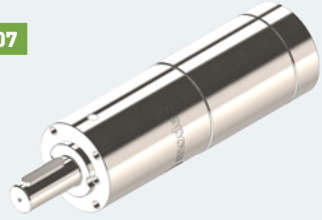
CONVERSION TABLE

Watt ► Horse power	Newton meter ► Pound feet	Millimeter ► Inch
Watt x 0,001341 = hp	Nm x 0,7376 = lb.ft	mm x 0,03937 = in
Bar ► Pound per square Inch	Normo Liter / minute ► Standard cubic feet per minute	Kilogram ► Pound
Bar x 14,5 = psi	NL / min x 0,03531 = scfm	Kg x 2,205 = lb

MOTOR MTE 07

POWER 380-480 W

MTE 07



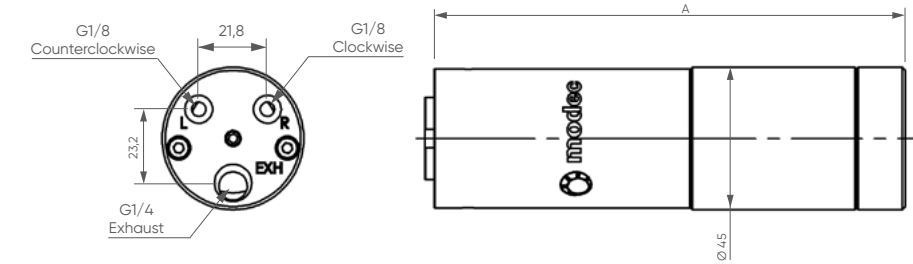
* rotation direction is defined when looking from the back of the motor

OPTIONS AVAILABLE FOR THIS MOTOR

Collected exhaust*	▶	▶	▶	▶	▶	▶
ATEX certification		▶			▶	▶
Lubrication free			▶		▶	
Kit start				▶		▶
Stainless steel	▶	▶	▶	▶	▶	▶
Code	11	23	27	28	36	37

LAYOUT

MTE 07

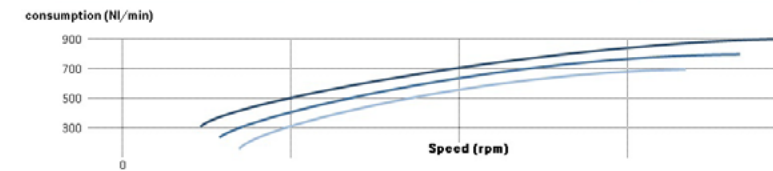
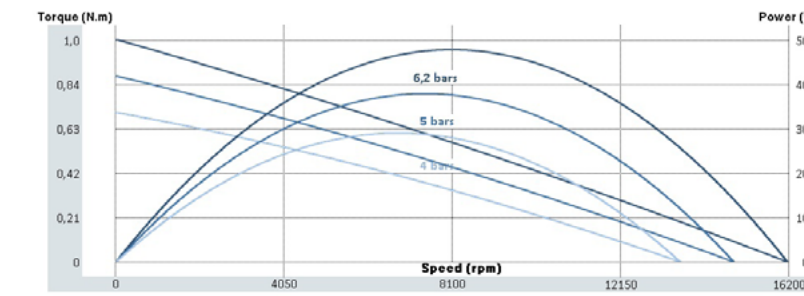


PERFORMANCES	MTE 07 XT	Air motor reference	Reduction ratio	Air supply pressure	Speed (rpm)		Torque (N.m)			Max Power (W)	Air cons (Nl/min)	Dimensions		
					@ max Power	Free	@ max Power	Max (stall)	Starting torque			A (mm)	Ø (mm)	Weight (kg)
MTE 07 XT 001	1			6,2 bars	8100	16200	0,56	1,0	0,92	480	700	132	45	1,4
				5 bars	7400	14800	0,48	0,88	0,77	380	600			
				4 bars	6800	13600	0,41	0,70	0,62	290	500			
				6,2 bars	6900	13800	0,53	0,92	0,81	380	700			
				5 bars	6200	12400	0,45	0,75	0,66	290	600			
				4 bars	5800	11600	0,36	0,61	0,54	220	500			
MTE 07 RV 001	1			6,2 bars	8100	16200	0,56	1,0	0,92	480	700	132	45	1,4
				5 bars	7400	14800	0,48	0,88	0,77	380	600			
				4 bars	6800	13600	0,41	0,70	0,62	290	500			

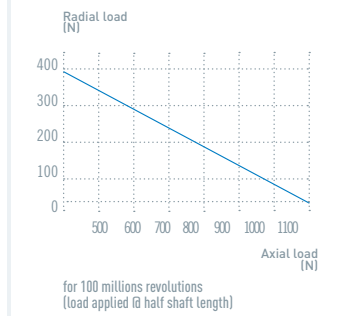
Data indicated in this table have an accuracy of +/- 5%

POWER, SPEED, TORQUE AND AIR CONSUMPTION GRAPHS

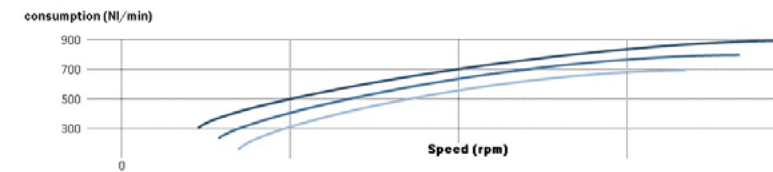
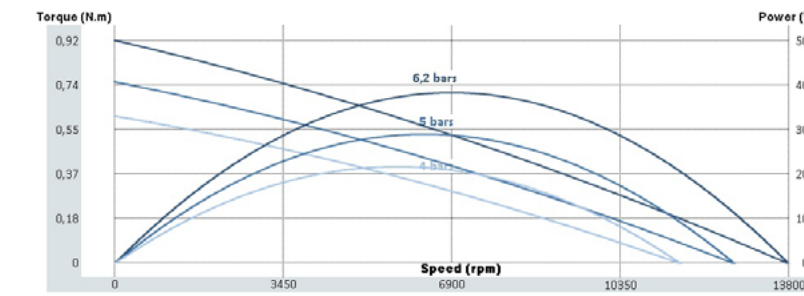
MTE 07 XT



MAXIMUM RADIAL & AXIAL LOAD



MTE 07 RV



NOTES



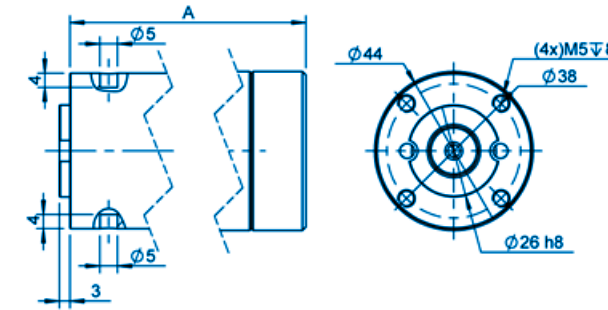
FLANGES & SHAFTS

Coupling the motor on your machine is as critical as choosing the right motor ! With Modec, no need to modify your machine to make it compliant with the motor. We offer a wide choice of flanges and shafts so that you can find the ones that match your need. In case you don't find the right one, we can design and manufacture specific flanges and shafts on request.

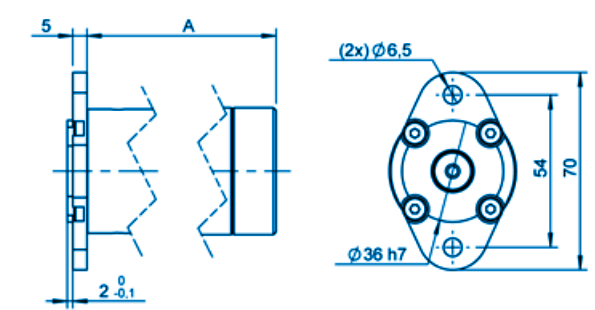
FLANGES & SHAFTS GROUP II (1/2)

MTE 07 MTS 07

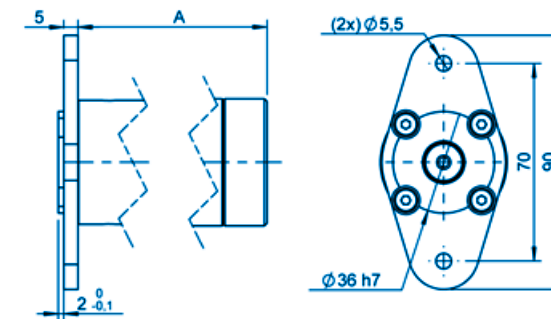
GROUP II FLANGE AA



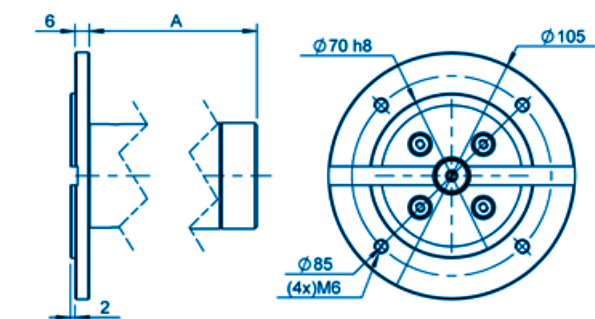
GROUP II FLANGE AB



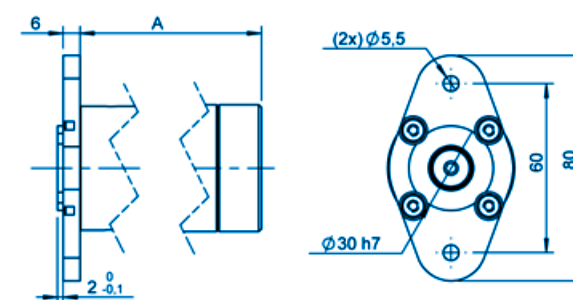
GROUP II FLANGE AC



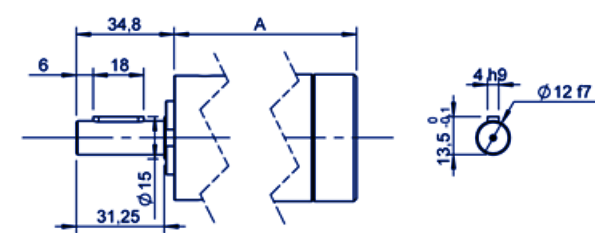
GROUP II FLANGE AD - IEC 71B14



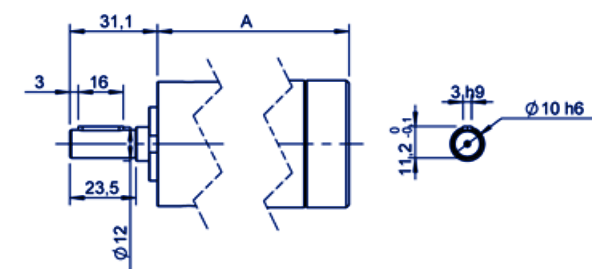
GROUP II FLANGE AE



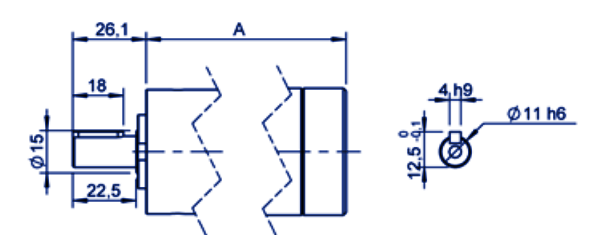
GROUP II SHAFT 001 - KEYED Ø12



GROUP II SHAFT 004 - KEYED Ø10



GROUP II SHAFT 006 - KEYED Ø11

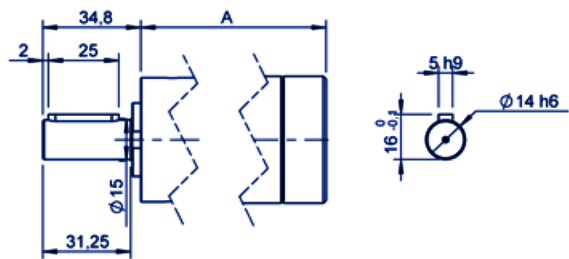


SHAFTS **GROUP II** (2/2)

MTE 07

MTS 07

GROUP II SHAFT S01 - KEYED $\varnothing 14$ - IEC 71B14



You didn't find
your match ?

Contact us !