



MAX POWER
710 W
MAX TORQUE
730 Nm

"08" series air motors exist in many versions, straight shaft or right angle drive, with or without integrated control handle, and with many different flanges and output shafts available as standard.

That air motor is also available with 4 types of integrated gearboxes, enabling it to adapt to many different applications, whether high speed is required (Easy duty), good balance between speed and torque (Standard duty) or high torque and robustness is mandatory (Heavy duty and Super Heavy duty).

With a maximum power of 700 W, it is one of the most versatile air motors in the range.

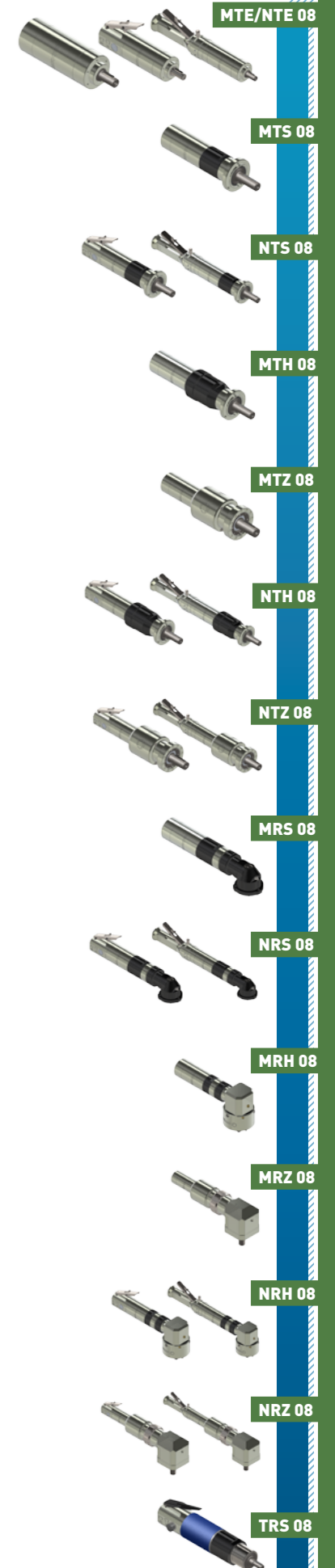
| + ACCESSORIES FOR THIS MOTOR | Reference |
|--|-----------|
| Filtration, pressure Regulation and Lubrication unit (FRL) | AC107 |
| Safety Air Treatment Box (SAT Box) | AC118 |
| With Pedal remote control | AC119 |
| With handle remote control | AC120 |
| With remote emergency kill switch | AC125 |
| With remote E-Stop and pedal remote control | AC121 |
| With remote E-Stop and handle remote control | AC122 |
| Maintenance kits | |
| Maintenance kit for "08" series | AC302 |
| Maintenance kit for lube free "08" series | AC312 |
| Maintenance kit for kit start "08" series | AC322 |
| Control handles | |
| Safety control handle for non reversible motor | AC415 |
| Safety control handle for reversible motor | AC416 |
| Progressive control handle for non reversible motor | AC417 |
| Progressive control handle for reversible motor | AC418 |
| modec Oil Co-16 | AC149 |
| Filters and silencers | |
| Metallic standard exhaust silencer | AC181 |
| Metallic standard inlet silencer | AC180 |
| Plastic standard exhaust silencer | AC183 |
| Plastic standard inlet silencer | AC150 |
| Heavy duty exhaust silencer | AC155 |
| Heavy duty inlet silencer | AC154 |
| Speed control muffler | AC172 |
| High flow air muffler | AC158 |
| Exhaust silencer filter | AC165 |

CONNECTION AND LUBRICATION

| | Min. fittings Ø | | Min. pipe Ø | | Lubrication (6,2 bars) |
|--|-----------------|----------------|---------------|----------------|------------------------|
| | In | Out | In | Out | |
| | 7 mm / 0,3 In | 10 mm / 0,4 In | 9 mm / 0,4 In | 13 mm / 0,5 In | 4 drops / minute |

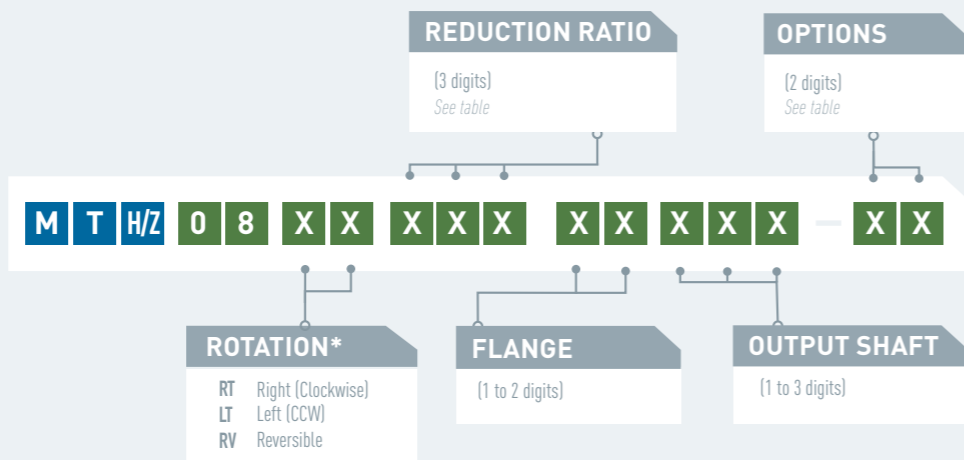
CONVERSION TABLE

| | | |
|-----------------------------|---|-------------------|
| Watt ► Horse power | Newton meter ► Pound feet | Millimeter ► Inch |
| Watt x 0,001341 = hp | Nm x 0,7376 = lb.ft | mm x 0,03937 = in |
| Bar ► Pound per square Inch | Normo Liter / minute ► Standard cubic feet per minute | Kilogram ► Pound |
| Bar x 14,5 = psi | NL / min x 0,03531 = scfm | Kg x 2,205 = lb |



MOTOR MTH 08 / MTZ 08

POWER 600-630 W



* rotation direction is defined when looking from the back of the motor

| PERFORMANCES | MTH/Z 08 XT | | Reduction ratio | Air supply pressure | Speed (rpm) | | Torque (N.m) | | | Max Power (W) | Air cons (Nl/min) | Dimensions | | |
|---------------|---------------------|-----------------|---------------------|---------------------|-------------|--------------|--------------|-----------------|-----------------|-------------------|-------------------|------------|-------------|-------------|
| | Air motor reference | | | | @ max Power | Free | @ max Power | Max (stall) | Starting torque | | | A (mm) | Ø (mm) | Weight (kg) |
| | | | | | | | | | | | | | | |
| MTH 08 XT 159 | | 159 | 6,2 bars | 60 | 119 | 96 | 165 | 145 | 596 | 1000 | 238,2 | 69 | 3,4 | |
| | | | 5 bars | 55 | 110 | 80 | 134 | 118 | 462 | 850 | | | | |
| | | | 4 bars | 50 | 99 | 64 | 105 | 92 | 333 | 650 | | | | |
| MTH 08 XT 190 | | 190 | 6,2 bars | 50 | 99 | 115 | 198 | 174 | 596 | 1000 | 238,2 | 69 | 3,4 | |
| | | | 5 bars | 46 | 92 | 96 | 160 | 141 | 462 | 850 | | | | |
| | | | 4 bars | 41 | 83 | 77 | 126 | 110 | 333 | 650 | | | | |
| MTH 08 XT 224 | | 224 | 6,2 bars | 42 | 84 | 135 | 233 | 205 | 596 | 1000 | 238,2 | 69 | 3,4 | |
| | | | 5 bars | 39 | 78 | 113 | 189 | 166 | 462 | 850 | | | | |
| | | | 4 bars | 35 | 70 | 91 | 148 | 130 | 333 | 650 | | | | |
| MTH 08 XT 258 | | 258 | 6,2 bars | 37 | 73 | 155 | 268 | 236 | 596 | 1000 | 238,2 | 69 | 3,4 | |
| | | | 5 bars | 34 | 68 | 130 | 217 | 191 | 462 | 850 | | | | |
| | | | 4 bars | 31 | 61 | 104 | 170 | 150 | 333 | 650 | | | | |
| MTH 08 XT 309 | | 309 | 6,2 bars | 31 | 61 | 186 | 321 | 283 | 596 | 1000 | 238,2 | 69 | 3,4 | |
| | | | 5 bars | 28 | 56 | 156 | 260 | 229 | 462 | 850 | | | | |
| | | | 4 bars | 25 | 51 | 125 | 204 | 179 | 333 | 650 | | | | |
| MTZ 08 XT 394 | | 394 | 6,2 bars | 24 | 48 | 237 | 410 | 360 | 596 | 1000 | 129,1 | 88,8 | 4,2 | |
| | | | 5 bars | 22 | 44 | 199 | 332 | 292 | 462 | 850 | | | | |
| | | | 4 bars | 20 | 40 | 159 | 260 | 229 | 333 | 650 | | | | |
| MTZ 08 XT 564 | | 564 | 6,2 bars | 17 | 34 | 340 | 587 | 516 | 596 | 1000 | 129,1 | 88,8 | 4,2 | |
| | | | 5 bars | 15 | 31 | 285 | 475 | 418 | 462 | 850 | | | | |
| | | | 4 bars | 14 | 28 | 228 | 372 | 328 | 333 | 650 | | | | |
| MTH/Z 08 RV | Air motor reference | Reduction ratio | Air supply pressure | Speed (rpm) | | Torque (N.m) | | | Max Power (W) | Air cons (Nl/min) | Dimensions | | | |
| | | | | @ max Power | Free | @ max Power | Max (stall) | Starting torque | | | A (mm) | Ø (mm) | Weight (kg) | |
| | | | | | | | | | | | | | | |
| MTH 08 RV 190 | | 190 | 6,2 bars | 48 | 96 | 126 | 182 | 160 | 633 | 950 | 238,2 | 69 | 3,4 | |
| | | | 5 bars | 44 | 88 | 103 | 149 | 131 | 471 | 750 | | | | |
| | | | 4 bars | 40 | 79 | 85 | 116 | 102 | 351 | 600 | | | | |
| MTH 08 RV 224 | | 224 | 6,2 bars | 41 | 81 | 149 | 214 | 189 | 633 | 950 | 238,2 | 69 | 3,4 | |
| | | | 5 bars | 37 | 74 | 121 | 176 | 154 | 471 | 750 | | | | |
| | | | 4 bars | 34 | 67 | 100 | 137 | 120 | 351 | 600 | | | | |
| MTH 08 RV 258 | | 258 | 6,2 bars | 35 | 70 | 171 | 247 | 217 | 633 | 950 | 238,2 | 69 | 3,4 | |
| | | | 5 bars | 32 | 65 | 139 | 202 | 178 | 471 | 750 | | | | |
| | | | 4 bars | 29 | 58 | 115 | 157 | 139 | 351 | 600 | | | | |
| MTH 08 RV 309 | | 309 | 6,2 bars | 29 | 59 | 205 | 296 | 260 | 633 | 950 | 238,2 | 69 | 3,4 | |
| | | | 5 bars | 27 | 54 | 167 | 242 | 213 | 471 | 750 | | | | |
| | | | 4 bars | 24 | 49 | 138 | 189 | 166 | 351 | 600 | | | | |
| MTZ 08 RV 394 | | 394 | 6,2 bars | 23 | 46 | 262 | 377 | 332 | 633 | 950 | 129,1 | 88,8 | 4,2 | |
| | | | 5 bars | 21 | 42 | 213 | 309 | 272 | 471 | 750 | | | | |
| | | | 4 bars | 19 | 38 | 176 | 241 | 212 | 351 | 600 | | | | |
| MTZ 08 RV 564 | | 564 | 6,2 bars | 16 | 32 | 375 | 540 | 475 | 633 | 950 | 129,1 | 88,8 | 4,2 | |
| | | | 5 bars | 15 | 30 | 305 | 442 | 389 | 471 | 750 | | | | |
| | | | 4 bars | 13 | 27 | 252 | 345 | 303 | 351 | 600 | | | | |

Data indicated in this table have an accuracy of +/- 5%

OPTIONS AVAILABLE FOR THE MTH 08

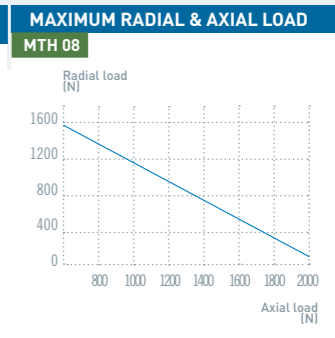
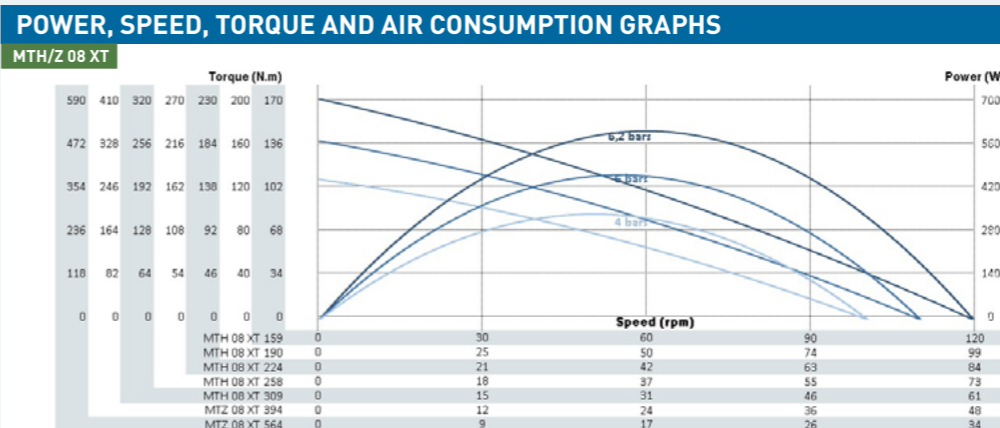
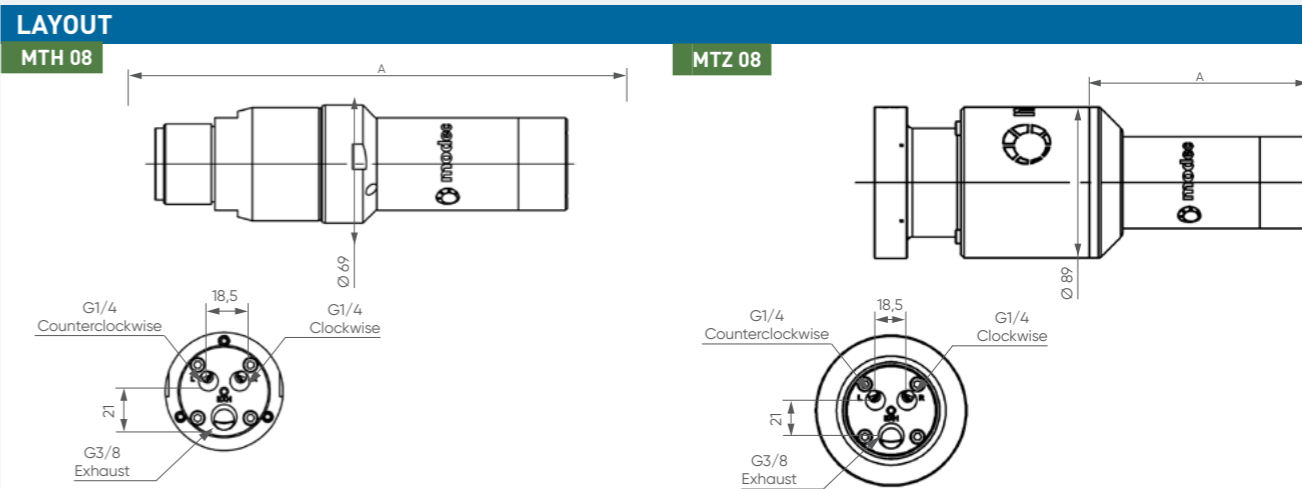
| | | | | | | | | | | | | |
|--------------------|----|----|----|----|----|----|----|----|----|----|----|----|
| Collected exhaust | 01 | 03 | 07 | 09 | 10 | 12 | 16 | 17 | 21 | 22 | 29 | 30 |
| ATEX certification | | | | | | | | | | | | |
| Left/Right switch* | | | | | | | | | | | | |
| Lubrication free | | | | | | | | | | | | |
| Kit start | | | | | | | | | | | | |
| Code | 03 | 03 | 07 | 09 | 10 | 12 | 16 | 17 | 21 | 22 | 29 | 30 |

* sur modèle réversible uniquement

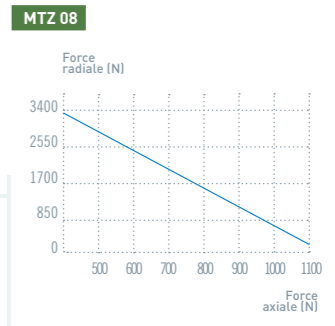
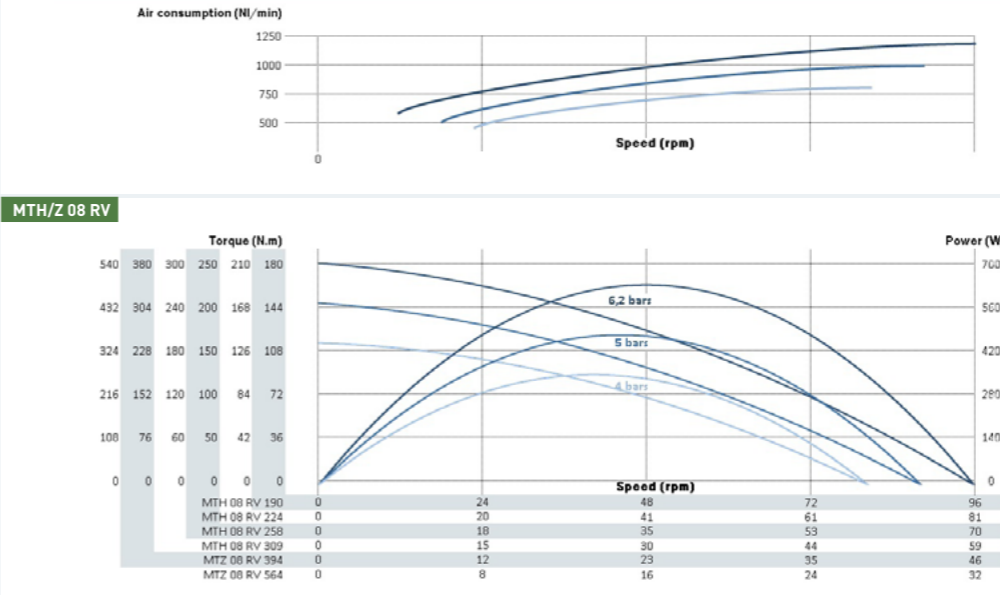
OPTIONS DISPONIBLES POUR LE MOTEUR MTZ 08

| | | | | | | | | | | | | | | | | | | |
|--------------------|----|----|----|----|----|----|----|----|----|----|----|----|----|----|----|----|----|----|
| Collected exhaust | 01 | 03 | 07 | 09 | 10 | 11 | 12 | 16 | 17 | 21 | 22 | 23 | 27 | 28 | 29 | 30 | 36 | 37 |
| ATEX certification | | | | | | | | | | | | | | | | | | |
| Left/Right switch* | | | | | | | | | | | | | | | | | | |
| Lubrication free | | | | | | | | | | | | | | | | | | |
| Kit start | | | | | | | | | | | | | | | | | | |
| Stainless steel | | | | | | | | | | | | | | | | | | |
| Code | 01 | 03 | 07 | 09 | 10 | 11 | 12 | 16 | 17 | 21 | 22 | 23 | 27 | 28 | 29 | 30 | 36 | 37 |

* Reversible motors only



for 100 millions revolutions (load applied @ half shaft length)



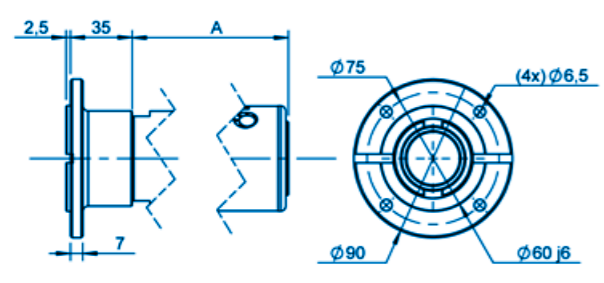
for 100 millions revolutions (load applied @ half shaft length)

NOTES

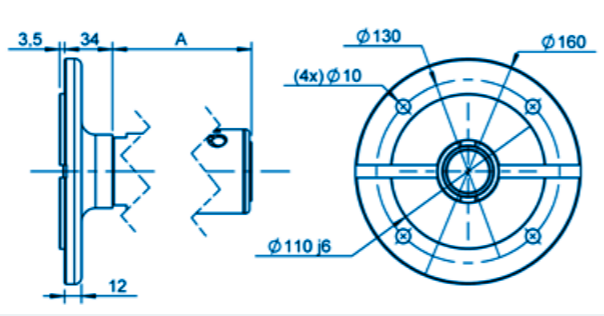


FLANGES **GROUP IV** (1/3) XTH 05 XTH 07 XTS 08 XTH 08 XTS 10 XTH 10 XTS 20 XTS 25

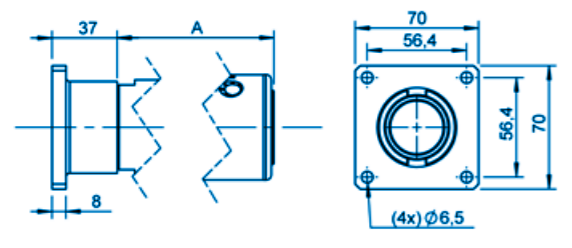
GROUP IV FLANGE AB - IEC63B14



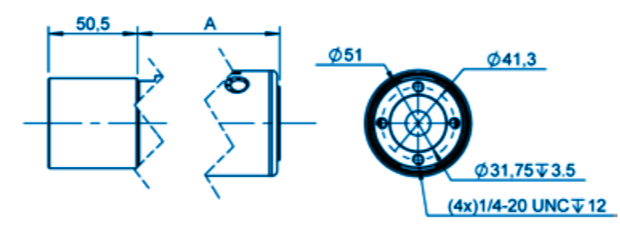
GROUP IV FLANGE AC - IEC71B5



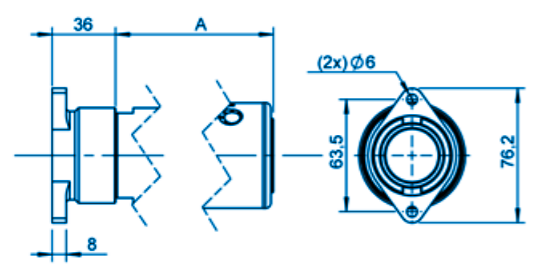
GROUP IV FLANGE AF



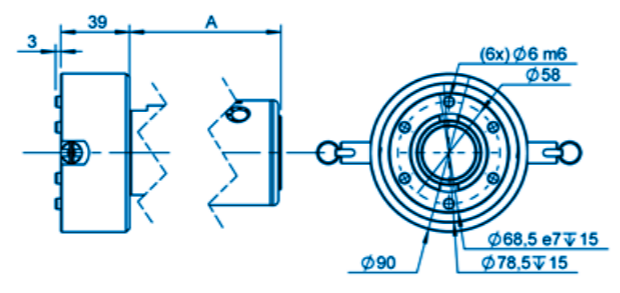
GROUP IV FLANGE AH



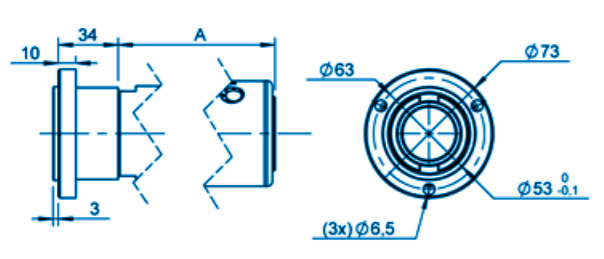
GROUP IV FLANGE AS



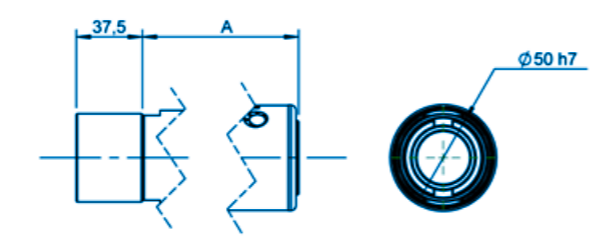
GROUP IV FLANGE AX - ARP



GROUP IV FLANGE B

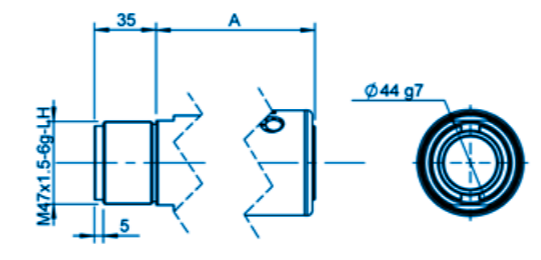


GROUP IV FLANGE B0

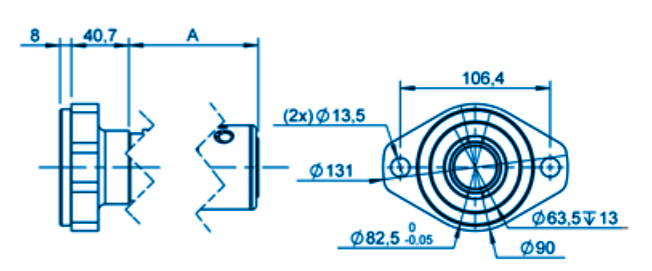


FLANGES **GROUP IV** (2/3) XTH 05 XTH 07 XTS 08 XTH 08 XTS 10 XTH 10 XTS 20 XTS 25

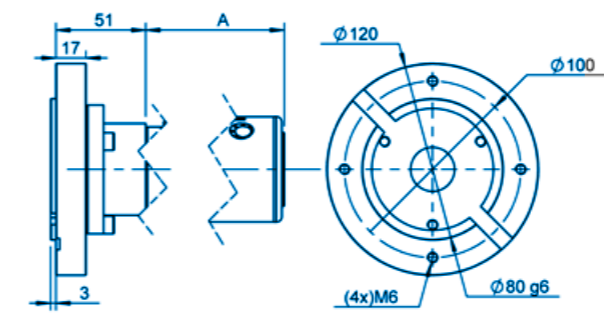
GROUP IV FLANGE F



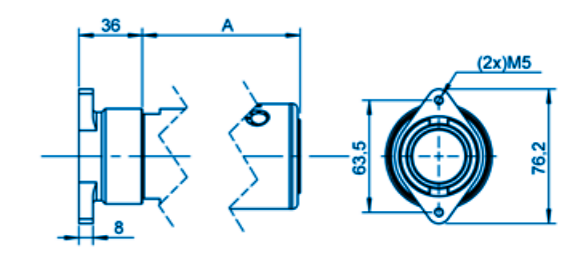
GROUP IV FLANGE FH



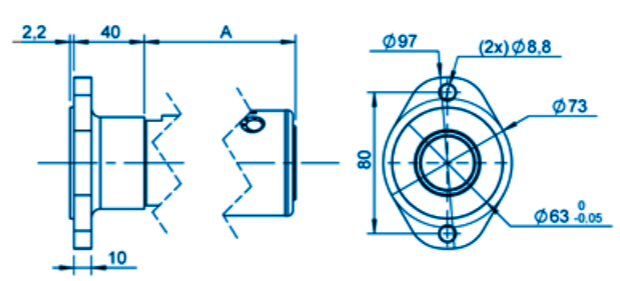
GROUP IV FLANGE FJ - IEC80B14



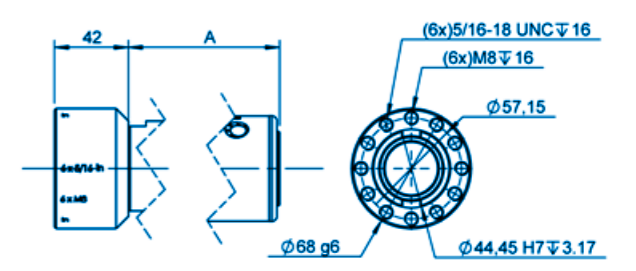
GROUP IV FLANGE J



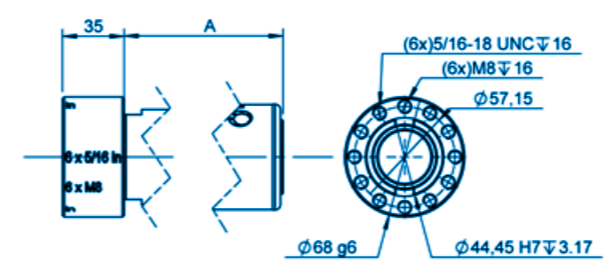
GROUP IV FLANGE L



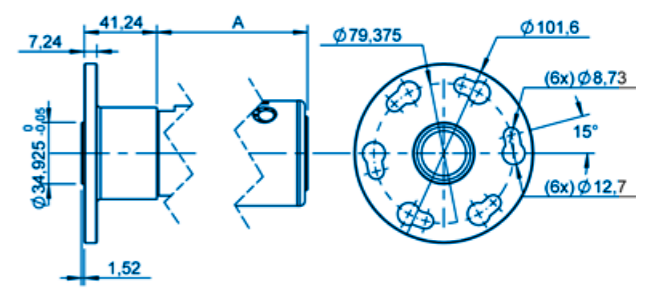
GROUP IV FLANGE M



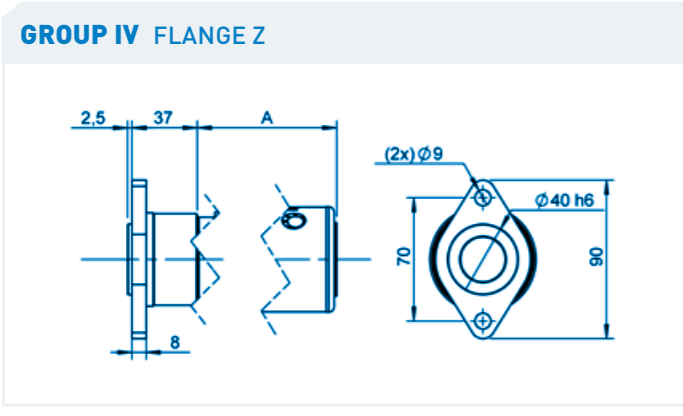
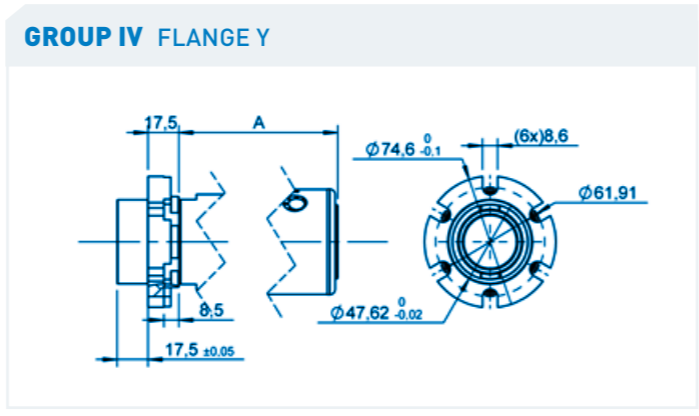
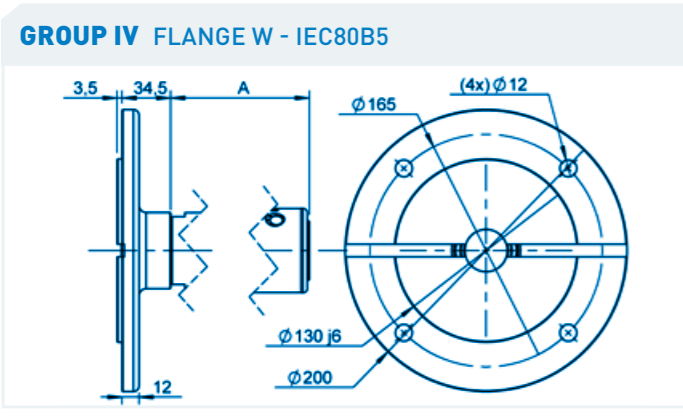
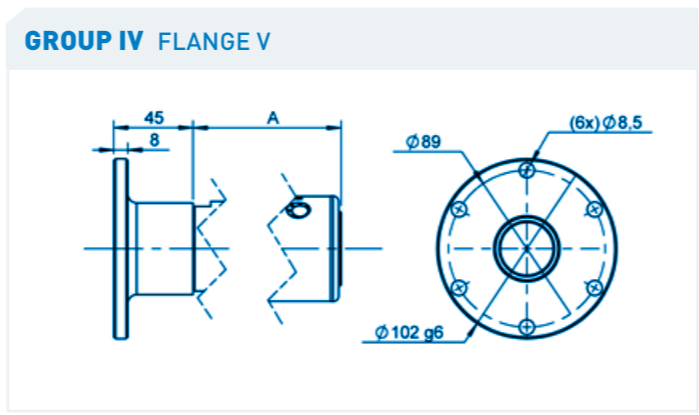
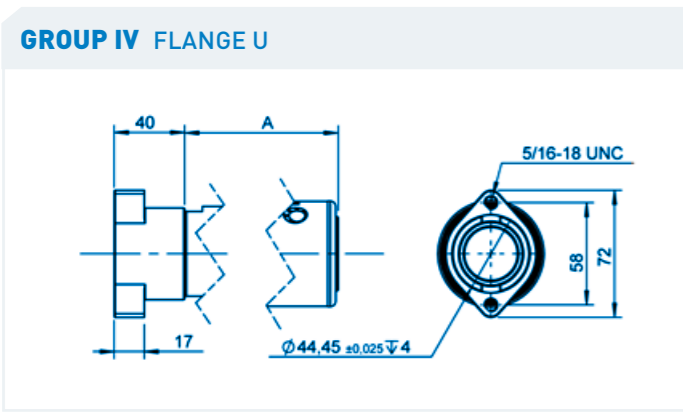
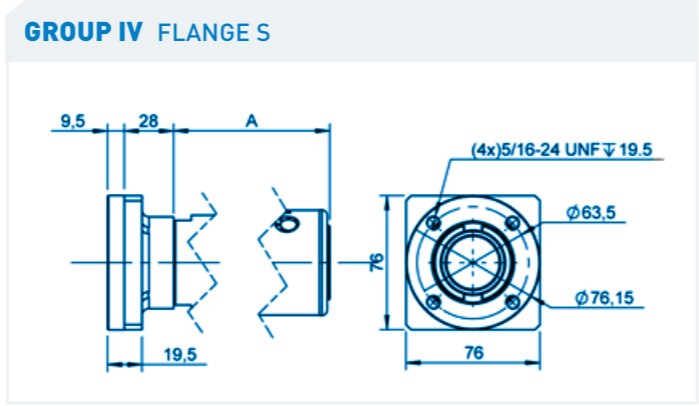
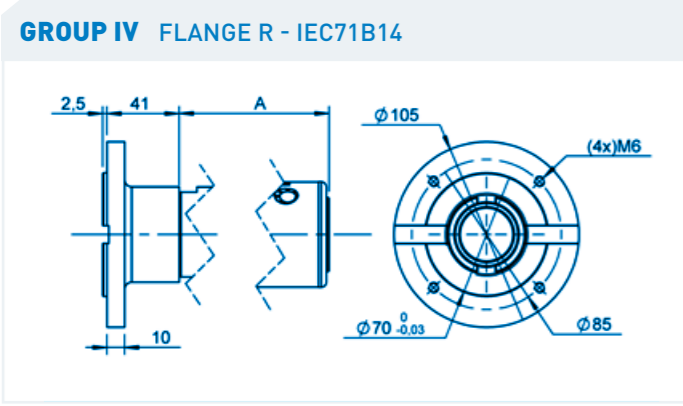
GROUP IV FLANGE N



GROUP IV FLANGE Q

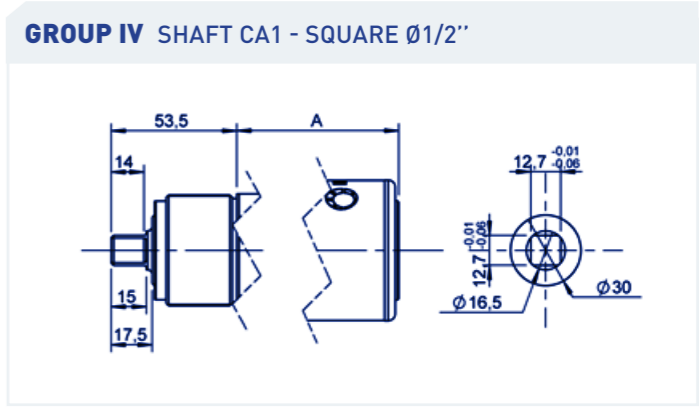
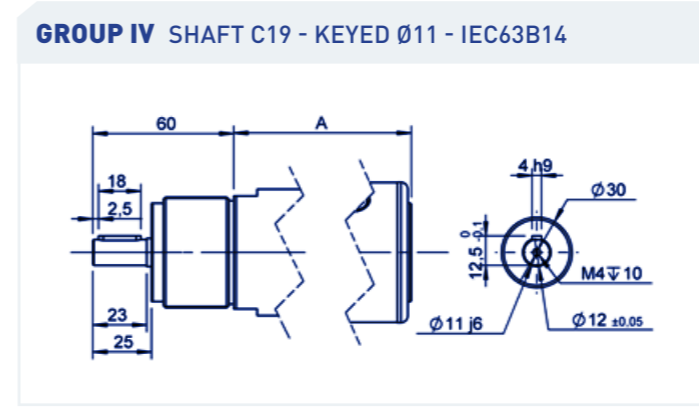
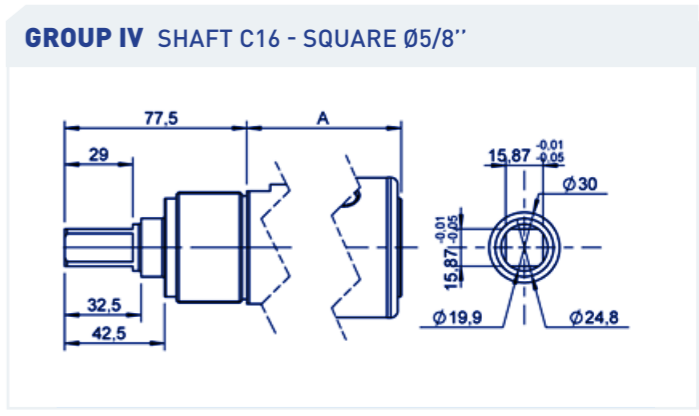
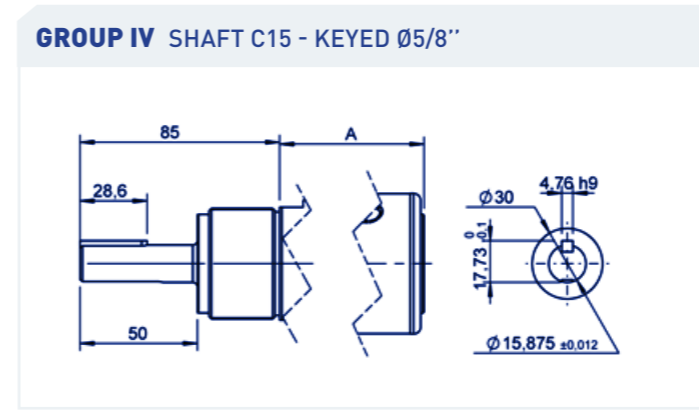
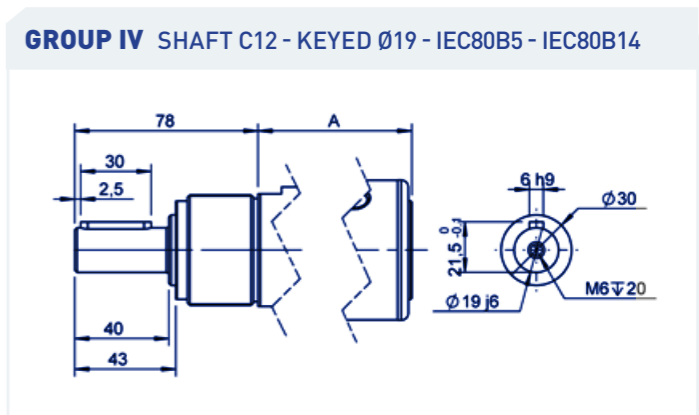
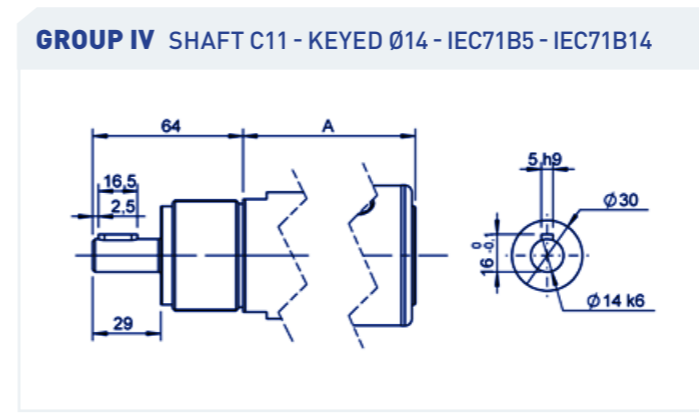
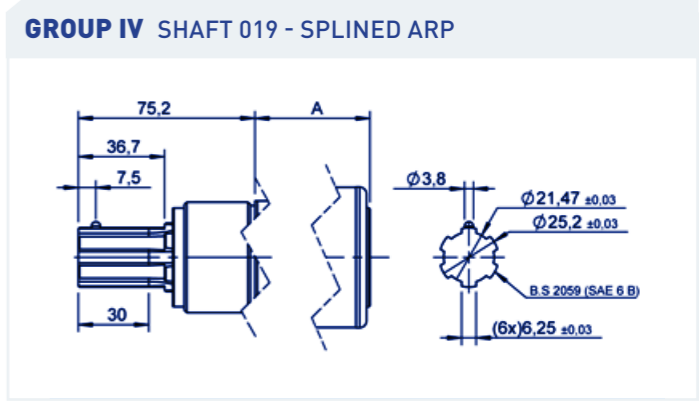
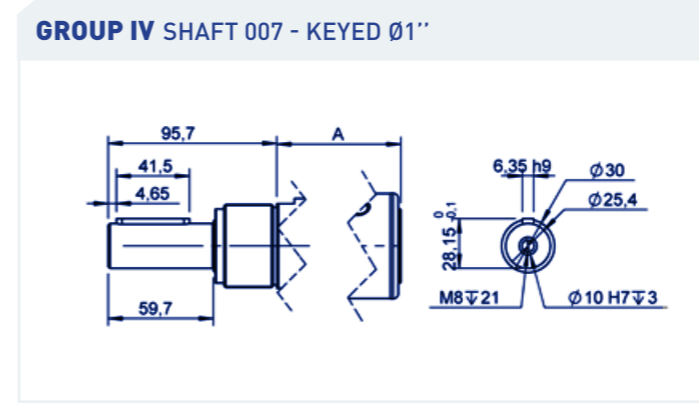


FLANGES **GROUP IV** (3/3) XTH 05 XTH 07 XTS 08 XTH 08 XTS 10 XTH 10 XTS 20 XTS 25



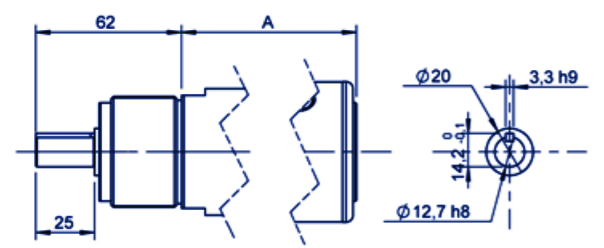
You didn't find your match ?
Contact us !

SHAFTS **GROUP IV** (1/3) XTH 05 XTH 07 XTS 08 XTH 08 XTS 10 XTH 10 XTS 20 XTS 25

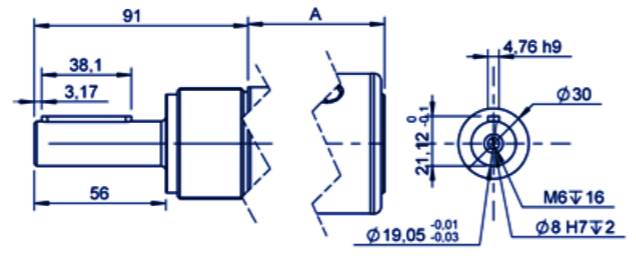


SHAFTS **GROUP IV** (2/3) XTH 05 XTH 07 XTS 08 XTH 08 XTS 10 XTH 10 XTS 20 XTS 25

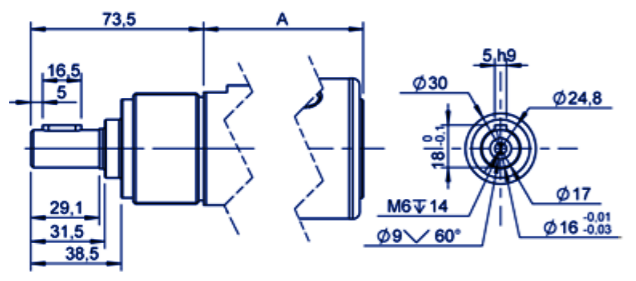
GROUP IV SHAFT CL1 - KEYED Ø1/2"



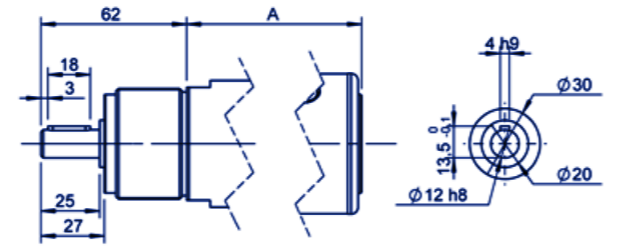
GROUP IV SHAFT CL2 - KEYED Ø3/4"



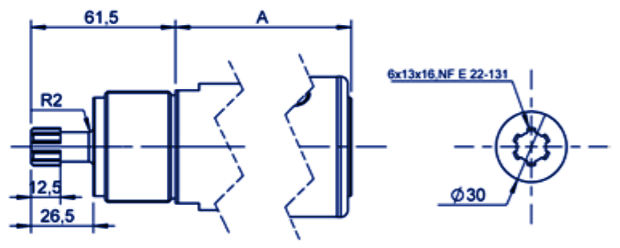
GROUP IV SHAFT CL6 - KEYED Ø16



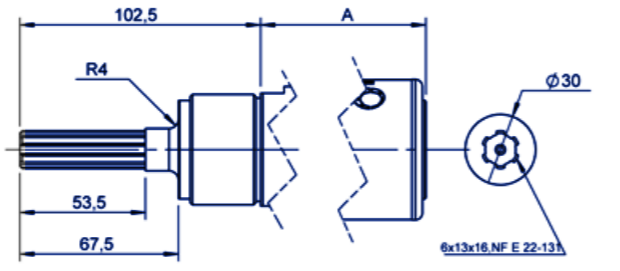
GROUP IV SHAFT CL9 - KEYED Ø12



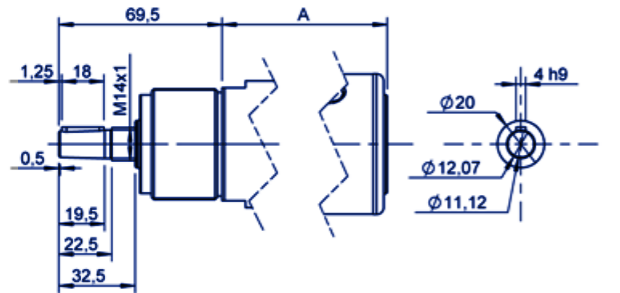
GROUP IV SHAFT CNC - SPLINED SHORT



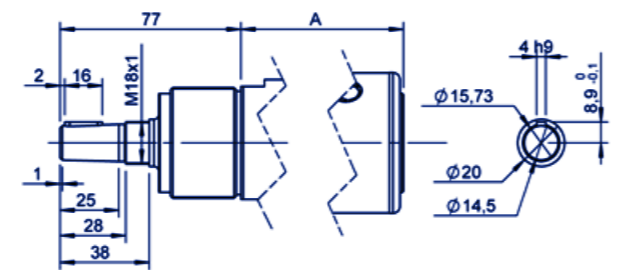
GROUP IV SHAFT CNL - SPLINED LONG



GROUP IV SHAFT CONICAL B12

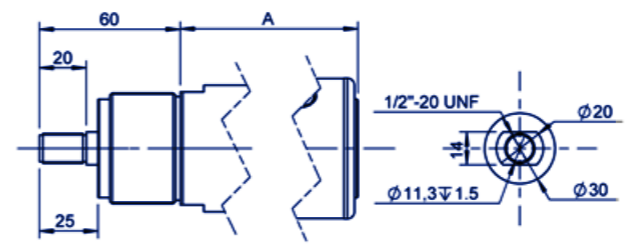


GROUP IV SHAFT CONICAL B16



SHAFTS **GROUP IV** (3/3) XTH 05 XTH 07 XTS 08 XTH 08 XTS 10 XTH 10 XTS 20 XTS 25

GROUP IV SHAFT FI1 - THREADED Ø1/2"

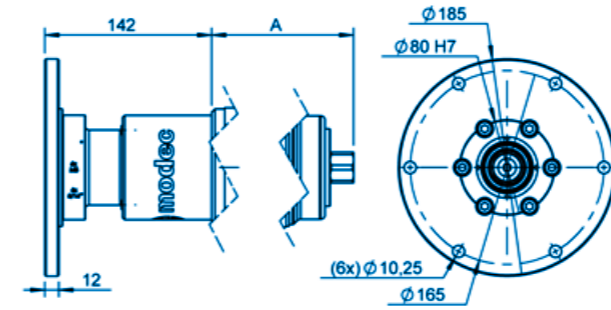


You didn't find your match ?
Contact us !

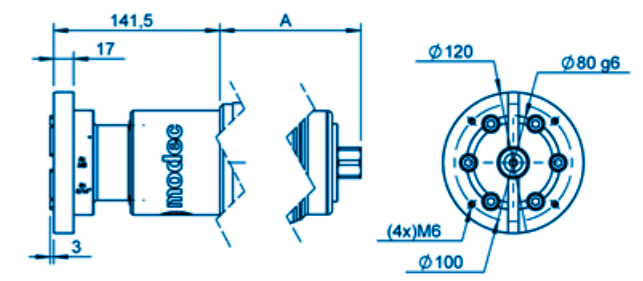
FLANGES **GROUP VI**

- XTZ 08
- XTZ 10
- XTZ 20
- XTZ 25
- XTS 30

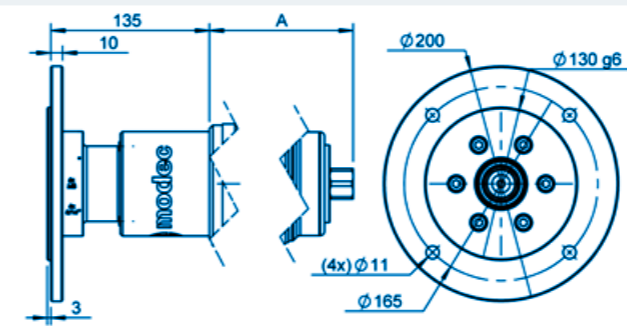
GROUP VI FLANGE AA



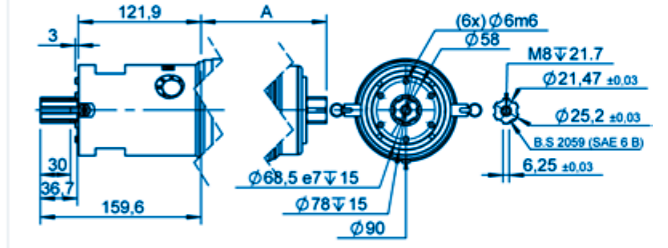
GROUP VI FLANGE AB - IEC80B14



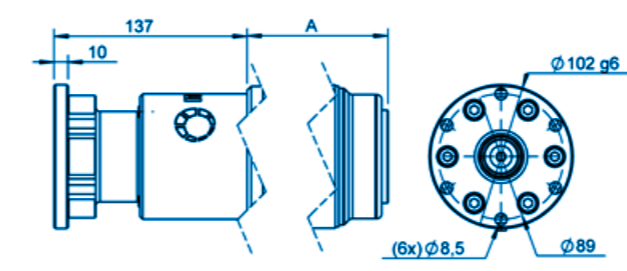
GROUP VI FLANGE AG - IEC80B5



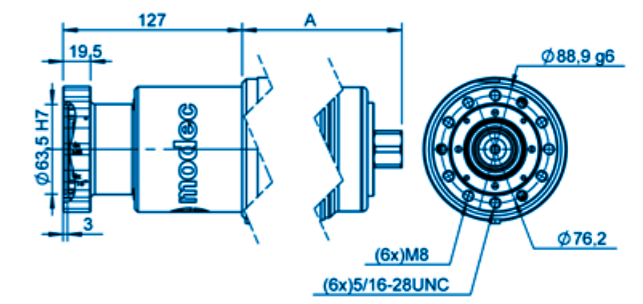
GROUP VI FLANGE AI WITH SHAFT CNW



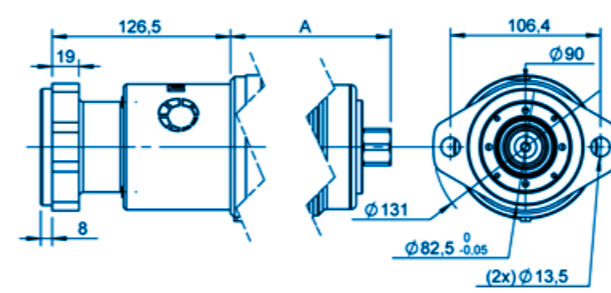
GROUP VI FLANGE AL



GROUP VI FLANGE B



GROUP VI FLANGE H



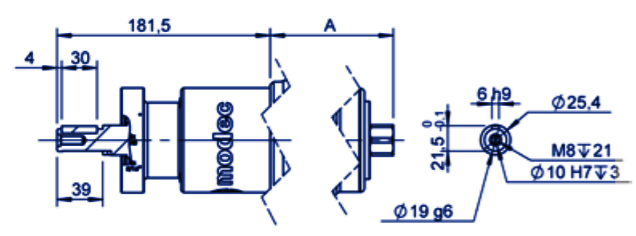
You didn't find your match ?

Contact us !

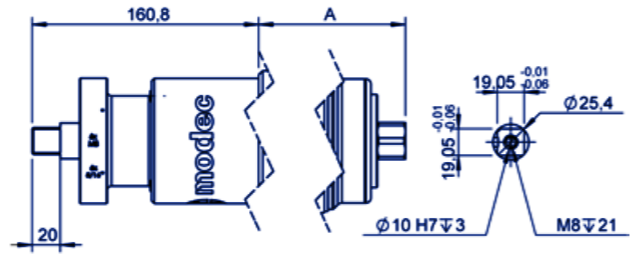
SHAFTS **GROUP VI**

- XTZ 08
- XTZ 10
- XTZ 20
- XTZ 25
- XTS 30

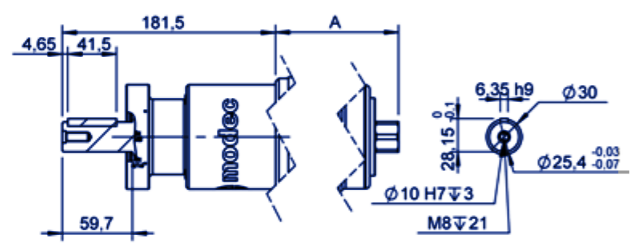
GROUP VI SHAFT 003 - KEYED Ø19 - IEC 80B14 - IEC 80B5



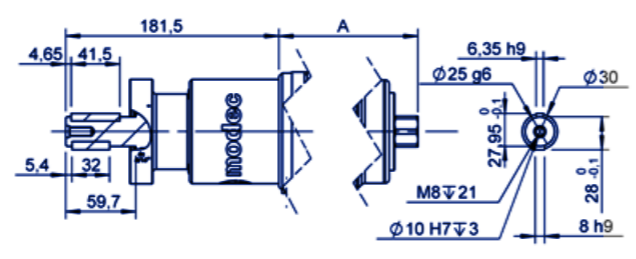
GROUP VI SHAFT CA1 - SQUARE 3/4"



GROUP VI SHAFT CL2 - KEYED Ø1"



GROUP VI SHAFT CL4 - KEYED Ø25



You didn't find your match ?

Contact us !