



MAX POWER  
**300 W**  
MAX TORQUE  
**370 Nm**

"05" series air motors are **the lightest and most compact**.

With a 300W power in a 113 x 36,5 mm cylinder weighting half a kilogram only, **these motors fit easily in a machine**.

Like any of our motors, power and torque are easily controllable by simply adjusting air supply pressure, which allows to use them "at stall" without any additional precaution.

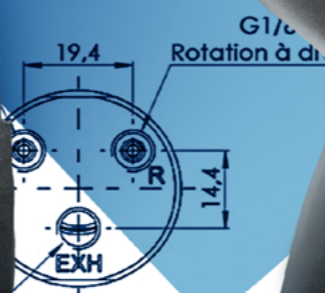
This makes them an ideal tool for cap screwing on bottling lines for example.



+ ACCESSORIES FOR THIS MOTOR	Reference
Filtration, pressure Regulation and Lubrication unit (FRL)	AC106
Safety Air Treatment Box (SAT Box)	AC118
With Pedal remote control	AC119
With handle remote control	AC120
With remote emergency kill switch	AC125
With remote E-Stop and pedal remote control	AC121
With remote E-Stop and handle remote control	AC122
Maintenance kits	
Maintenance kit for "05" series	AC300
Maintenance kit for lube free "05" series	AC310
Maintenance kit for kit start "05" series	AC320
modec Oil Co-16	AC149
Filters and silencers	
Mini metallic silencer	AC169
Metallic standard exhaust silencer	AC168
Plastic standard exhaust silencer	AC166
Heavy duty exhaust silencer	AC167
Speed control muffler	AC170
High flow air muffler	AC158
Exhaust silencer filter	AC165

CONNECTION AND LUBRICATION					
🔧	Min. fittings Ø		Min. pipe Ø		Lubrication (6,2 bars)
	In	Out	In	Out	
	5 mm / 0,2 In	5 mm / 0,2 In	6 mm / 0,2 In	6 mm / 0,2 In	2 drops / minute

CONVERSION TABLE		
Watt ▶ Horse power	Newton meter ▶ Pound feet	Millimeter ▶ Inch
Watt x 0,001341 = hp	Nm x 0,7376 = lb.ft	mm x 0,03937 = in
Bar ▶ Pound per square Inch	Normo Liter / minute ▶ Standard cubic feet per minute	Kilogram ▶ Pound
Bar x 14,5 = psi	NL / min x 0,03531 = scfm	Kg x 2,205 = lb

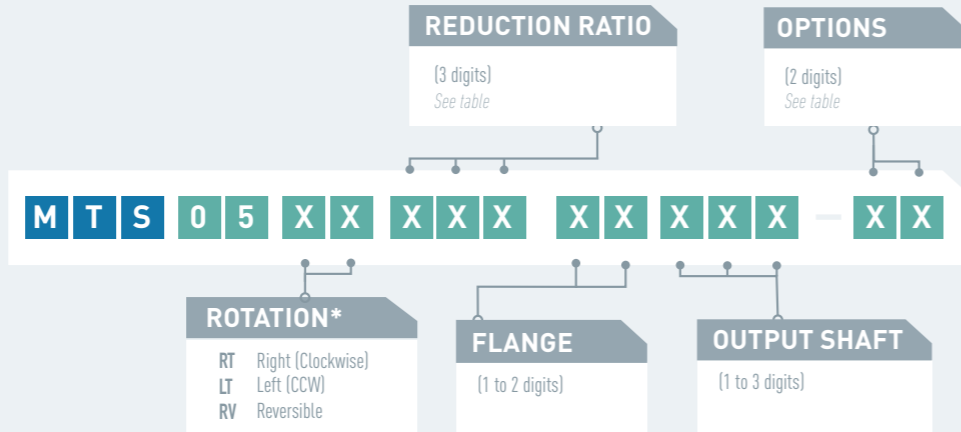
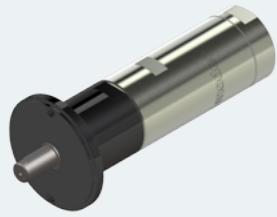




# MOTOR MTS 05

## POWER 300 W

MTS 05



\* rotation direction is defined when looking from the back of the motor

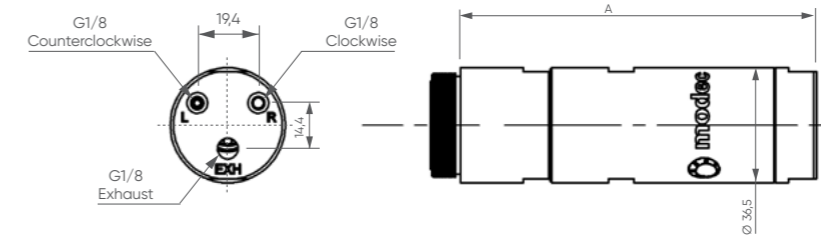
### OPTIONS AVAILABLE FOR THIS MOTOR

Collected exhaust*	<input type="checkbox"/>	<input type="checkbox"/>	<input type="checkbox"/>	<input type="checkbox"/>	<input type="checkbox"/>	
ATEX certification	<input type="checkbox"/>	<input type="checkbox"/>	<input type="checkbox"/>	<input type="checkbox"/>	<input type="checkbox"/>	
Lubrication free	<input type="checkbox"/>	<input type="checkbox"/>	<input type="checkbox"/>	<input type="checkbox"/>	<input type="checkbox"/>	
Kit start	<input type="checkbox"/>	<input type="checkbox"/>	<input type="checkbox"/>	<input type="checkbox"/>	<input type="checkbox"/>	
Code	01	07	09	10	21	22

\* Exhaust is always collected on "05" series air motors

### LAYOUT

MTS 05



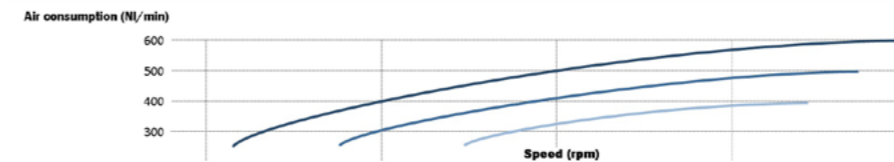
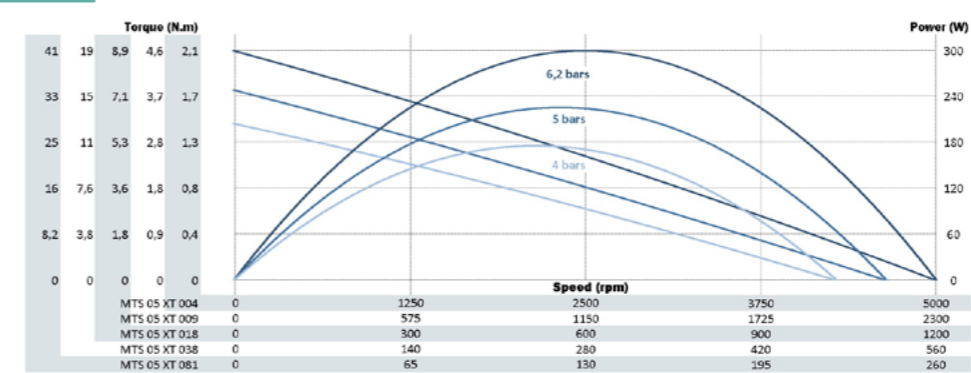
PERFORMANCES

Air motor reference	Reduction ratio	Air supply pressure	Speed (rpm)		Torque (N.m)			Max Power (W)	Air cons (NI/min)	Dimensions		
			@ max Power	Free	@ max Power	Max (stall)	Starting torque			A (mm)	Ø (mm)	Weight (kg)
MTS 05 XT 004	004	6,2 bars	2507	5014	1,1	2,1	1,9	299	500	113	36,5	0,7
		5 bars	2314	4629	0,9	1,8	1,6	226	400			
		4 bars	2141	4281	0,8	1,5	1,3	174	300			
MTS 05 XT 009	009	6,2 bars	1170	2340	2,4	4,6	4,0	299	500	113	36,5	0,7
		5 bars	1080	2160	2,0	3,8	3,3	226	400			
		4 bars	999	1998	1,7	3,1	2,7	174	300			
MTS 05 XT 018	018	6,2 bars	597	1194	4,8	8,9	7,9	299	500	113	36,5	0,7
		5 bars	551	1102	3,9	7,4	6,5	226	400			
		4 bars	510	1019	3,3	6,1	5,4	174	300			
MTS 05 XT 038	038	6,2 bars	279	557	10	19	17	299	500	113	36,5	0,7
		5 bars	257	514	8,4	16	14	226	400			
		4 bars	238	476	7,0	13	11	174	300			
MTS 05 XT 081	081	6,2 bars	130	260	22	41	36	299	500	113	36,5	0,7
		5 bars	120	240	18	34	30	226	400			
		4 bars	111	222	15	28	25	174	300			
MTS 05 RV	Reduction ratio	Air supply pressure	Speed (rpm)		Torque (N.m)			Max Power (W)	Air cons (NI/min)	Dimensions		
			@ max Power	Free	@ max Power	Max (stall)	Starting torque			A (mm)	Ø (mm)	Weight (kg)
MTS 05 RV 004	004	6,2 bars	2353	4706	1,2	2,0	1,3	294	500	113	36,5	0,7
		5 bars	2199	4397	1,0	1,7	1,0	226	400			
		4 bars	2044	4089	0,8	1,3	0,8	173	300			
MTS 05 RV 009	009	6,2 bars	1098	2196	2,6	4,3	2,7	294	500	113	36,5	0,7
		5 bars	1026	2052	2,1	3,6	2,2	226	400			
		4 bars	954	1908	1,7	2,9	1,8	173	300			
MTS 05 RV 018	018	6,2 bars	560	1120	5,0	8,5	5,3	294	500	113	36,5	0,7
		5 bars	523	1047	4,1	7,0	4,3	226	400			
		4 bars	487	973	3,4	5,7	3,5	173	300			
MTS 05 RV 038	038	6,2 bars	261	523	11	18	11	294	500	113	36,5	0,7
		5 bars	244	489	8,8	15	9,3	226	400			
		4 bars	227	454	7,3	12	7,5	173	300			
MTS 05 RV 081	081	6,2 bars	122	244	23	39	24	294	500	113	36,5	0,7
		5 bars	114	228	19	32	20	226	400			
		4 bars	106	212	16	26	16	173	300			

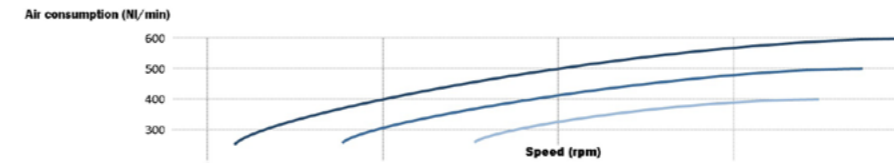
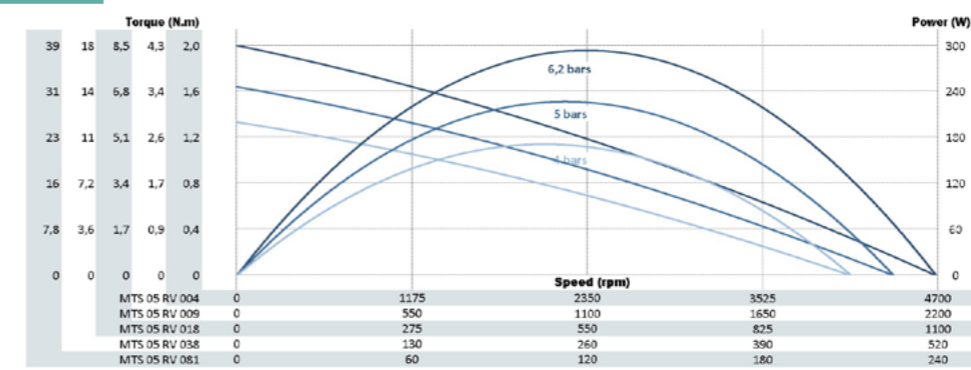
Data indicated in this table have an accuracy of +/- 5%

### POWER, SPEED, TORQUE AND AIR CONSUMPTION GRAPHS

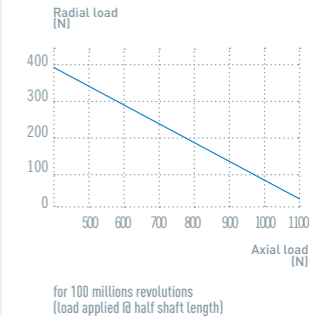
MTS 05 XT



MTS 05 RV



### MAXIMUM RADIAL & AXIAL LOAD

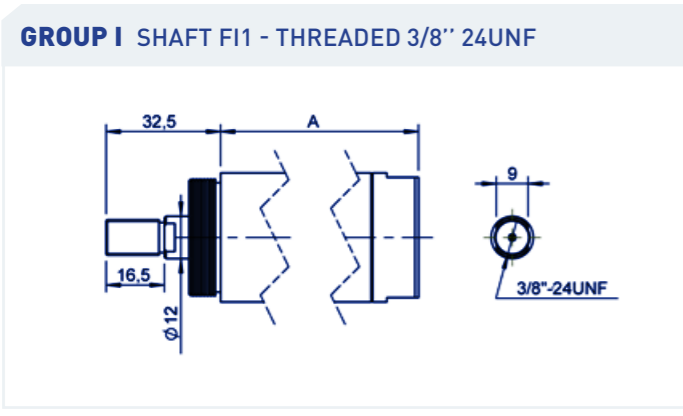
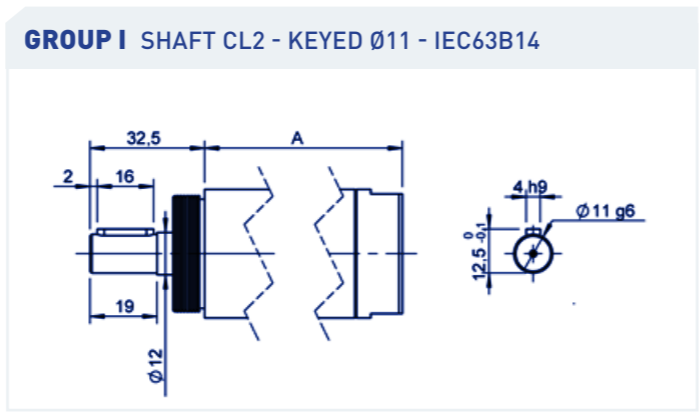
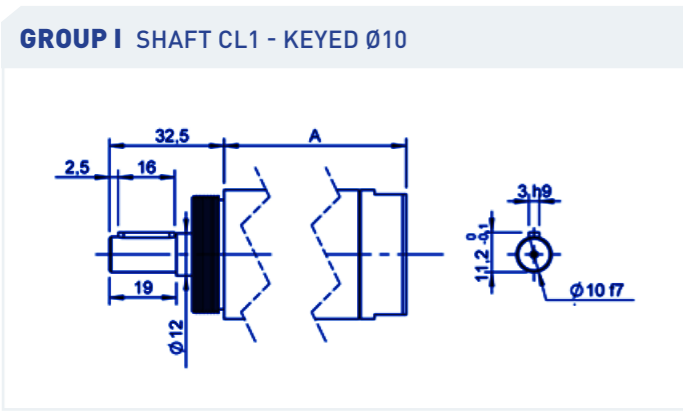
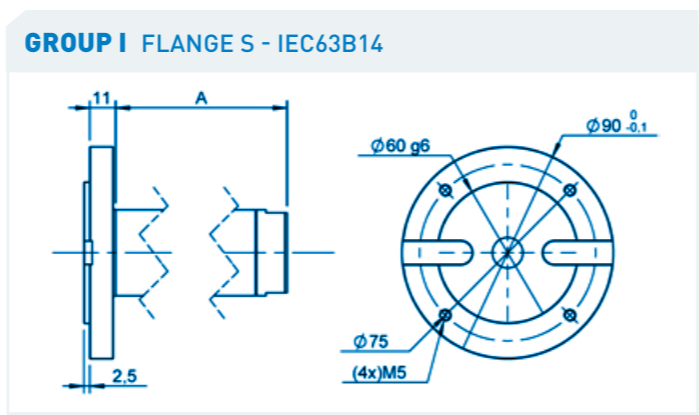
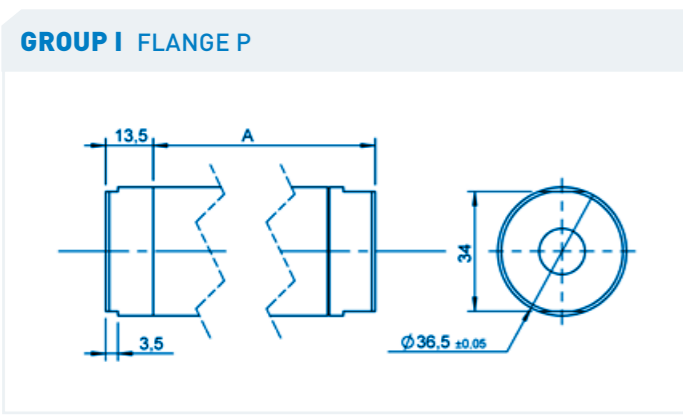
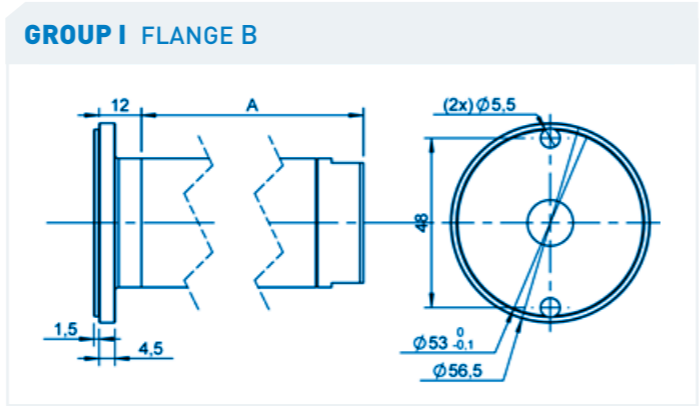
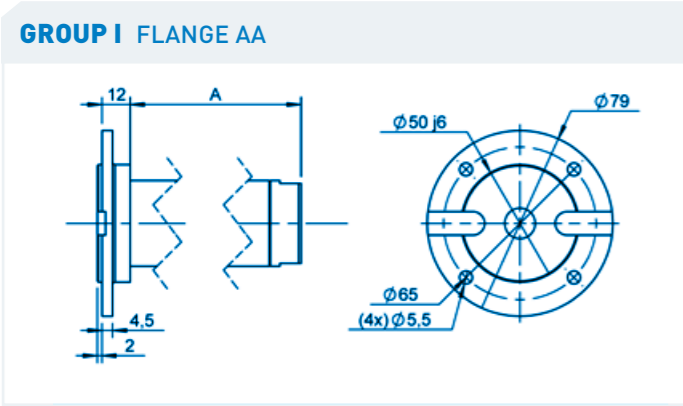


### NOTES

# FLANGES & SHAFTS

Coupling the motor on your machine is as critical as choosing the right motor ! With Modec, no need to modify your machine to make it compliant with the motor. We offer a wide choice of flanges and shafts so that you can find the ones that match your need. In case you don't find the right one, we can design and manufacture specific flanges and shafts on request.

FLANGES & SHAFTS **GROUP I** MTE 05 MTS 05



You didn't find your match ?

Contact us !