



MAX POWER
1900 W
MAX TORQUE
840 Nm

Twin brothers of the "10", the "20" series air motors offer the same versatility and are available with the same speed and torque ranges but **with even greater power.**

It contains the 3 same application families (Easy, Standard and Heavy duty) with the same configurations of right angle drive heads and integrated handles. **Ideal for applications as different as blasting, conveyors, lifting or integration in special machines.**

Like their little brothers, the "20" range air motors **can get an integrated speed controller**, which is indispensable for certain manual applications.



+ ACCESSORIES FOR THIS MOTOR	Reference
Filtration, pressure Regulation and Lubrication unit (FRL)	AC107
Safety Air Treatment Box (SAT Box)	AC118
With Pedal remote control	AC119
With handle remote control	AC120
With remote emergency kill switch	AC125
With remote E-Stop and pedal remote control	AC121
With remote E-Stop and handle remote control	AC122
Maintenance kits	
Maintenance kit for "20" series	AC304
Maintenance kit for lube free "20" series	AC314
Maintenance kit for kit start "20" series	AC324
Exhaust collector kit for "20" series	AC341
modec Oil Co-16	AC149
Control handles	
Safety control handle for non reversible "20" series	AC406
Safety control handle for reversible "20" series	AC404
Progressive control handle for non reversible "20" series	AC400
Progressive control handle for reversible "20" series	AC408
Filters et silencers	
Metallic standard silencer	AC182
Metallic standard inlet silencer (RV)	AC181
Plastic standard silencer	AC152
Plastic standard inlet silencer (RV)	AC183
Heavy duty silencer	AC156
Heavy duty inlet silencer (RV)	AC155
High flow air muffler	AC159
Exhaust silencer filter	AC161
Speed control muffler	AC174

CONNECTION AND LUBRICATION				
Min. fittings Ø	Min. pipe Ø		Lubrication [6,2 bars]	
	In	Out		
10 mm / 0,4 In	16 mm / 0,6 In	13 mm / 0,5 In	20 mm / 0,8 In	7 drops / minute

CONVERSION TABLE		
Watt ► Horse power	Newton meter ► Pound feet	Millimeter ► Inch
Watt x 0,001341 = hp	Nm x 0,7376 = lb.ft	mm x 0,03937 = in
Bar ► Pound per square Inch	Normo Liter / minute ► Standard cubic feet per minute	Kilogram ► Pound
Bar x 14,5 = psi	NL / min x 0,03531 = scfm	Kg x 2,205 = lb

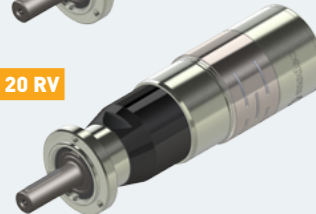
MOTORS MTS 20

POWER 1700-1800 W

MTS 20 XT



MTS 20 RV

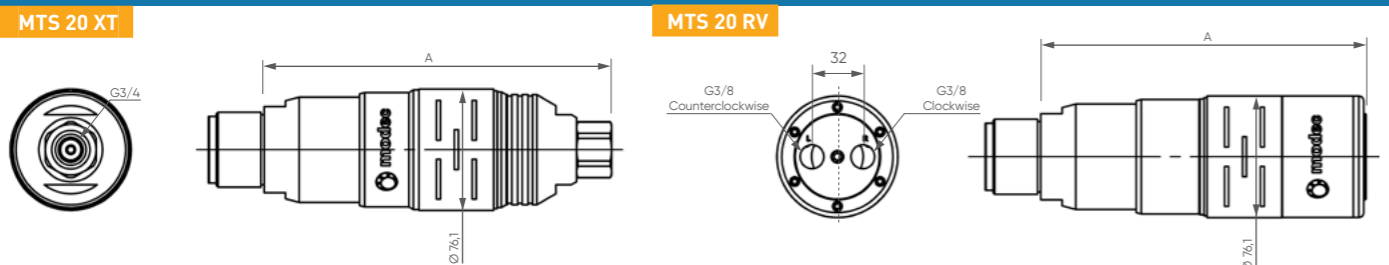


* rotation direction is defined when looking from the back of the motor

PERFORMANCES	MTS 20 XT		Reduction ratio	Air supply pressure	Speed (rpm)		Torque (N.m)			Max Power (W)	Air cons (Nl/min)	Dimensions		
	Air motor reference				@ max Power	Free	@ max Power	Max (stall)	Starting torque			A (mm)	Ø (mm)	Weight (kg)
MTS 20 XT 004		4	6,2 bars	1385	2770	11	21	19	1650	1900	186,5	76,1	2,9	
			5 bars	1295	2589	9,7	17	15	1311	1600				
			4 bars	1213	2426	8,2	14	12	1040	1200				
MTS 20 XT 005		5	6,2 bars	1203	2407	13	24	21	1650	1900	186,5	76,1	2,9	
			5 bars	1125	2249	11	20	17	1311	1600				
			4 bars	1054	2107	9,4	16	14	1040	1200				
MTS 20 XT 006		6	6,2 bars	1005	2009	16	29	26	1650	1900	186,5	76,1	2,9	
			5 bars	939	1878	13	24	21	1311	1600				
			4 bars	880	1759	11	19	17	1040	1200				
MTS 20 XT 007		7	6,2 bars	788	1576	20	37	33	1650	1900	186,5	76,1	2,9	
			5 bars	737	1473	17	30	26	1311	1600				
			4 bars	690	1380	14	24	21	1040	1200				
MTS 20 XT 011		11	6,2 bars	550	1100	29	53	47	1650	1900	186,5	76,1	2,9	
			5 bars	514	1028	24	43	38	1311	1600				
			4 bars	482	963	21	34	30	1040	1200				
MTS 20 XT 017		17	6,2 bars	332	664	47	88	77	1650	1900	218,5	76,1	3,5	
			5 bars	310	621	40	71	63	1311	1600				
			4 bars	291	582	34	57	50	1040	1200				
MTS 20 XT 023		23	6,2 bars	251	501	63	116	102	1650	1900	218,5	76,1	3,5	
			5 bars	234	469	53	94	83	1311	1600				
			4 bars	220	439	45	75	66	1040	1200				
MTS 20 XT 028		28	6,2 bars	209	419	75	139	123	1650	1900	218,5	76,1	3,5	
			5 bars	196	391	64	113	99	1311	1600				
			4 bars	183	367	54	90	80	1040	1200				
MTS 20 XT 033		33	6,2 bars	175	349	90	167	147	1650	1900	218,5	76,1	3,5	
			5 bars	163	327	77	135	119	1311	1600				
			4 bars	153	306	65	108	95	1040	1200				
MTS 20 XT 042		42	6,2 bars	137	274	115	213	187	1650	1900	218,5	76,1	3,5	
			5 bars	128	256	98	173	152	1311	1600				
			4 bars	120	240	83	138	121	1040	1200				
MTS 20 XT 054		54	6,2 bars	108	215	147	271	239	1650	1900	218,5	76,1	3,5	
			5 bars	100	201	125	220	194	1311	1600				
			4 bars	94	188	106	176	155	1040	1200				

Data indicated in this table have an accuracy of +/- 5%

LAYOUT



OPTIONS AVAILABLE FOR THIS MOTOR

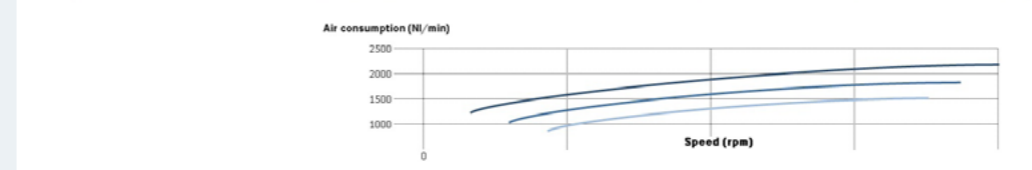
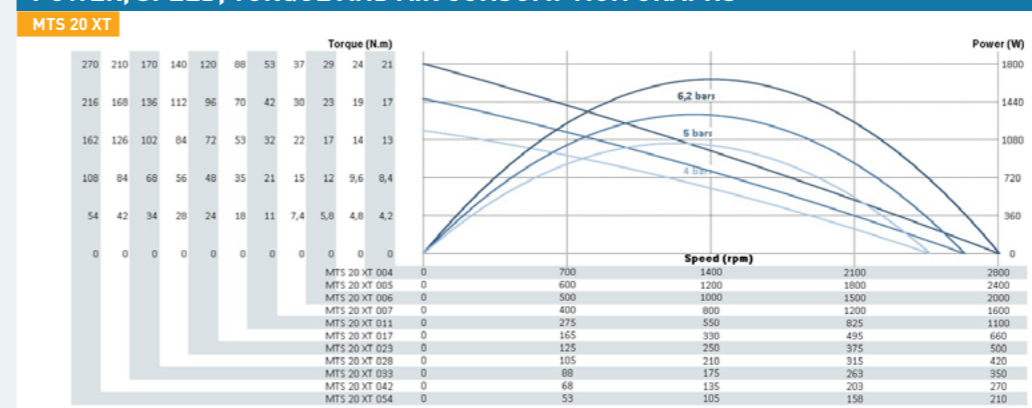
Options	00	01	02	03	04	05	06	07	09	10	12	13	14	15	16	17	18	19	21	22	29	30	31	32
Collected exhaust			■																					
ATEX certification				■																				
Left/Right switch*					■																			
Lubrication free						■																		
Kit start							■																	
Speed control**																								
Code																								

* Reversible motors only
** Non reversible motors only

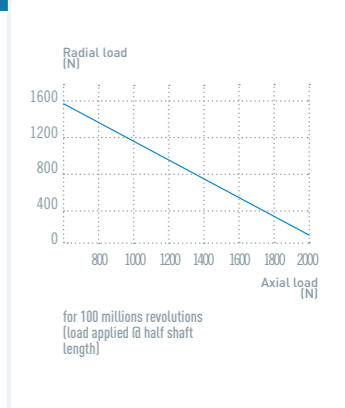
PERFORMANCES	MTS 20 RV		Reduction ratio	Air supply pressure	Speed (rpm)		Torque (N.m)			Max Power (W)	Air cons (Nl/min)	Dimensions		
	Air motor reference				@ max Power	Free	@ max Power	Max (stall)	Starting torque			A (mm)	Ø (mm)	Weight (kg)
MTS 20 RV 004		4	6,2 bars	1301	2602	13	16	14	1779	2100	172,5	76,1	3,3	
			5 bars	1227	2455	11	14	12	1365	1700				
			4 bars	1163	2326	8,5	11	9,9	1029	1400				
MTS 20 RV 005		5	6,2 bars	1130	2261	15	19	17	1779	2100	172,5	76,1	3,3	
			5 bars	1066	2133	12	16	14	1365	1700				
			4 bars	1010	2020	9,7	13	11	1029	1400				
MTS 20 RV 006		6	6,2 bars	944	1887	18	23	20	1779	2100	172,5	76,1	3,3	
			5 bars	890	1780	15	19	17	1365	1700				
			4 bars	843	1687	12	15	14	1029	1400				
MTS 20 RV 007		7	6,2 bars	740	1481	23	29	25	1779	2100	172,5	76,1	3,3	
			5 bars	698	1397	19	24	21	1365	1700				
			4 bars	662	1323	15	20	17	1029	1400				
MTS 20 RV 011		11	6,2 bars	517	1034	33	41	36	1779	2100	172,5	76,1	3,3	
			5 bars	487	975	27	34	30	1365	1700				
			4 bars	462	924	21	28	25	1029	1400				
MTS 20 RV 017		17	6,2 bars	312	624	54	68	60	1779	2100	204,5	76,1	3,9	
			5 bars	294	589	44	57	50	1365	1700				
			4 bars	279	558	35	47	41	1029	1400				
MTS 20 RV 023		23	6,2 bars	236	471	72	91	80	1779	2100	204,5	76,1	3,9	
			5 bars	222	444	59	75	66	1365	1700				
			4 bars	210	421	47	62	55	1029	1400				
MTS 20 RV 028		28	6,2 bars	197	393	86	109	96	1779	2100	204,5	76,1	3,9	
			5 bars	185	371	70	90	80	1365	1700				
			4 bars	176	351	56	74	65	1029	1400				
MTS 20 RV 033		33	6,2 bars	164	328	104	130	115	1779	2100	204,5	76,1	3,9	
			5 bars	155	310	84	108	95	1365	1700				
			4 bars	147	293	67	89	78	1029	1400				
MTS 20 RV 042		42	6,2 bars	129	257	132	166	146	1779	2100	204,5	76,1	3,9	
			5 bars	121	243	107	138	121	1365	1700				
			4 bars	115	230	85	113	100	1029	1400				
MTS 20 RV 054		54	6,2 bars	101	202	168	212	186	1779	2100	204,5	76,1	3,9	
			5 bars	95	191	137	176	155	1365	1700				
			4 bars	90	180	109	145	127	1029	1400				
MTS 20 RV 077		77	6,2 bars	71	141	241	303	267	1779	2100	204,5	76,1	3,9	
			5 bars	67	133	196	252	222	1365	1700				
			4 bars	63	126	156	207	182	1029	1400				

Data indicated in this table have an accuracy of +/- 5%

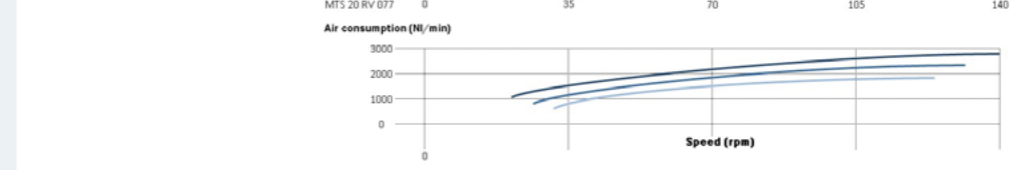
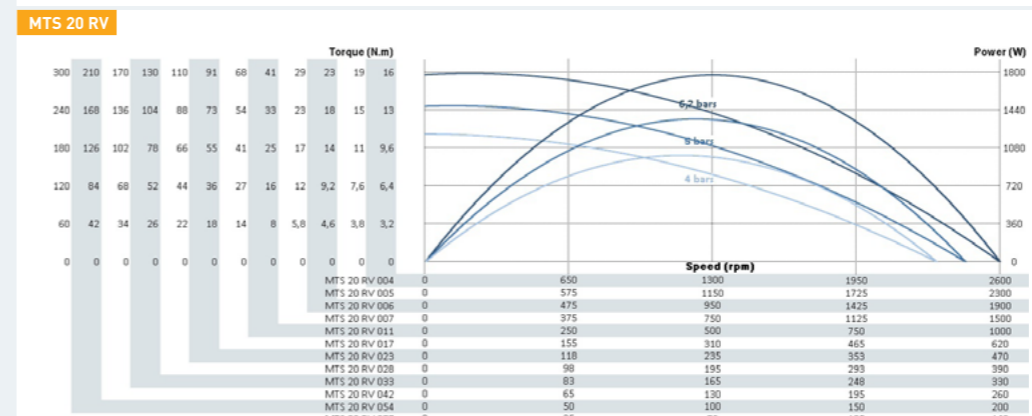
POWER, SPEED, TORQUE AND AIR CONSUMPTION GRAPHS



MAXIMUM RADIAL & AXIAL LOAD

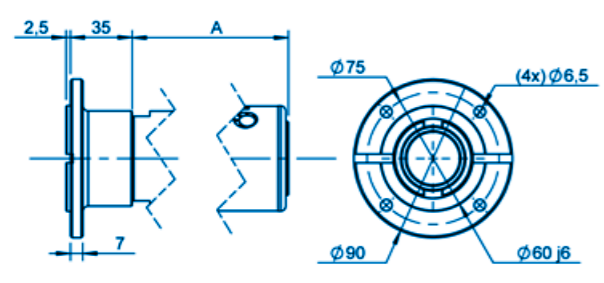


NOTES

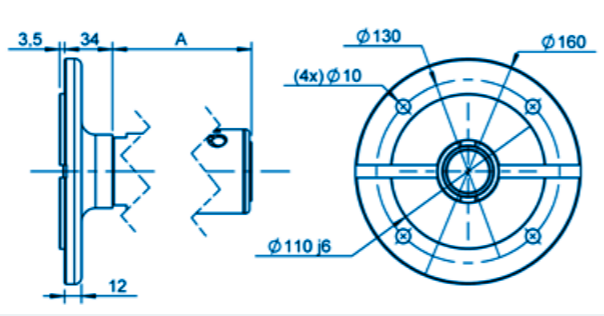


FLANGES **GROUP IV** (1/3) XTH 05 XTH 07 XTS 08 XTH 08 XTS 10 XTH 10 XTS 20 XTS 25

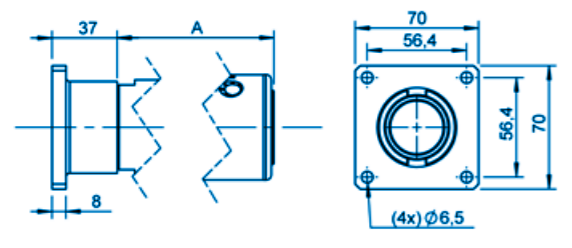
GROUP IV FLANGE AB - IEC63B14



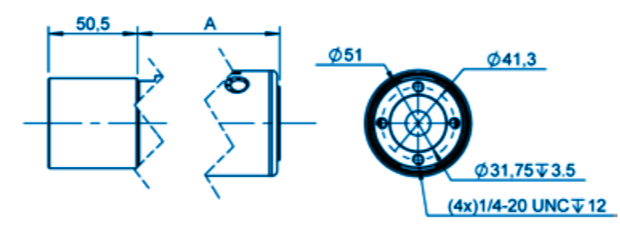
GROUP IV FLANGE AC - IEC71B5



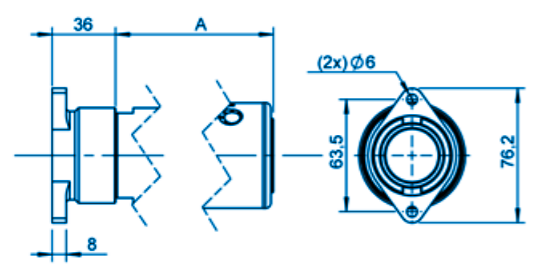
GROUP IV FLANGE AF



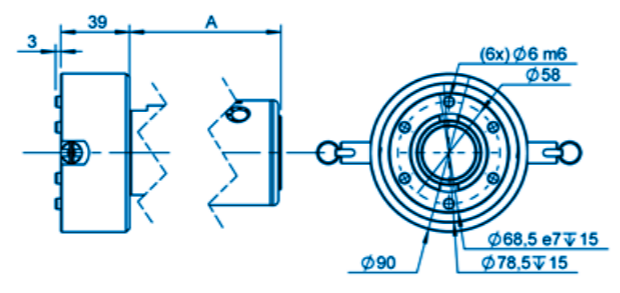
GROUP IV FLANGE AH



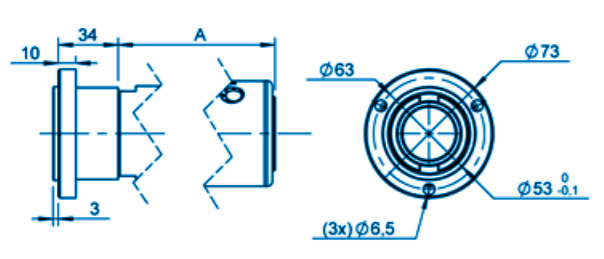
GROUP IV FLANGE AS



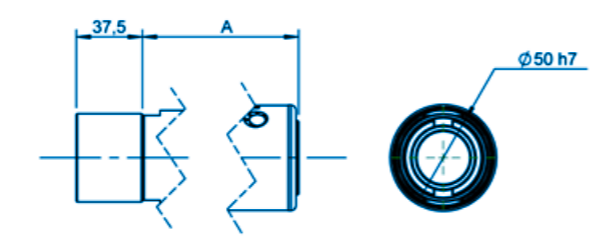
GROUP IV FLANGE AX - ARP



GROUP IV FLANGE B

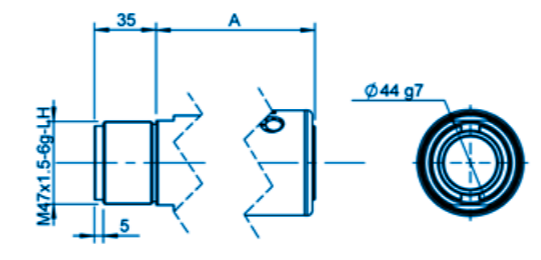


GROUP IV FLANGE B0

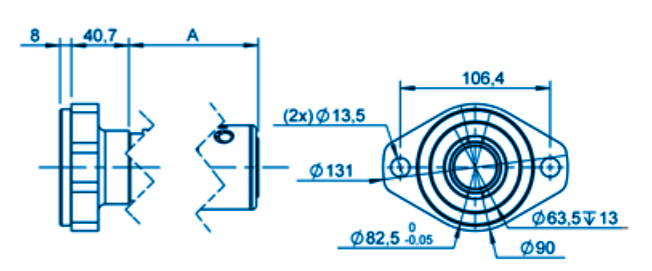


FLANGES **GROUP IV** (2/3) XTH 05 XTH 07 XTS 08 XTH 08 XTS 10 XTH 10 XTS 20 XTS 25

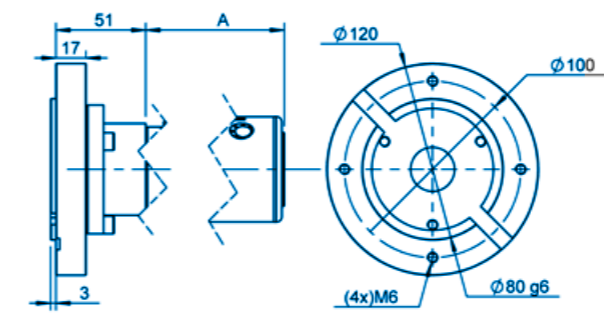
GROUP IV FLANGE F



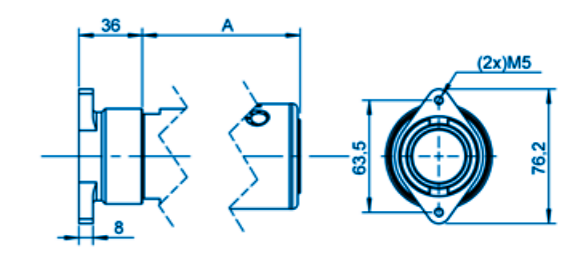
GROUP IV FLANGE FH



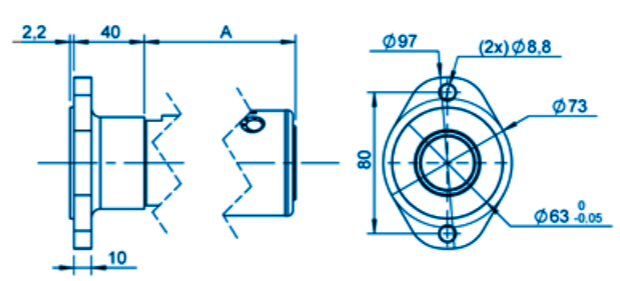
GROUP IV FLANGE FJ - IEC80B14



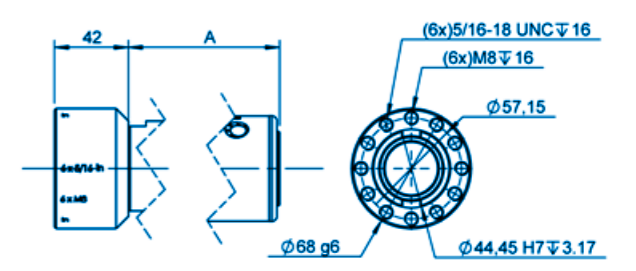
GROUP IV FLANGE J



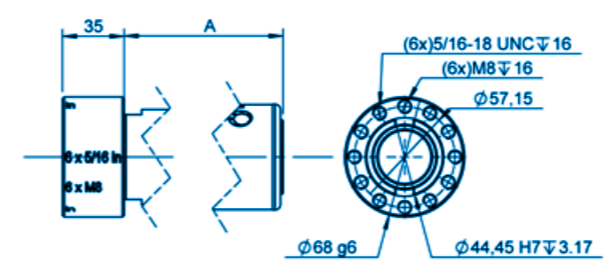
GROUP IV FLANGE L



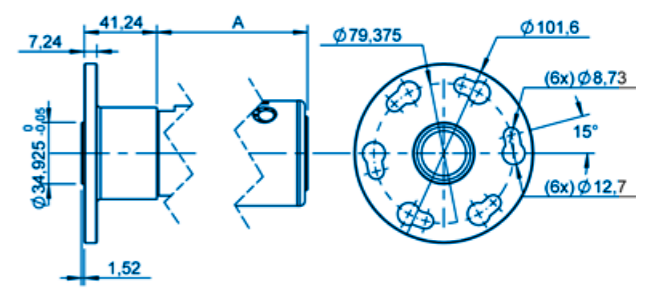
GROUP IV FLANGE M



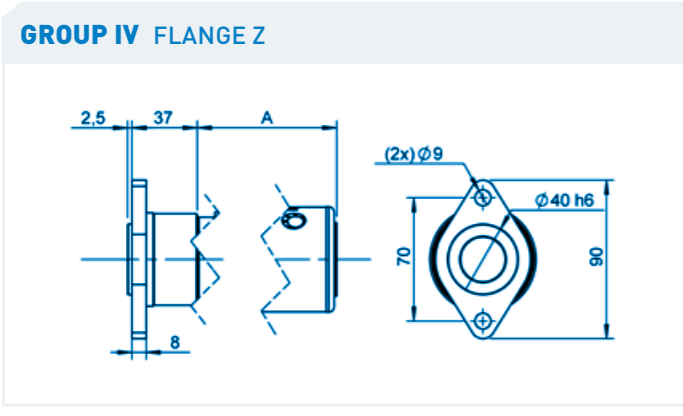
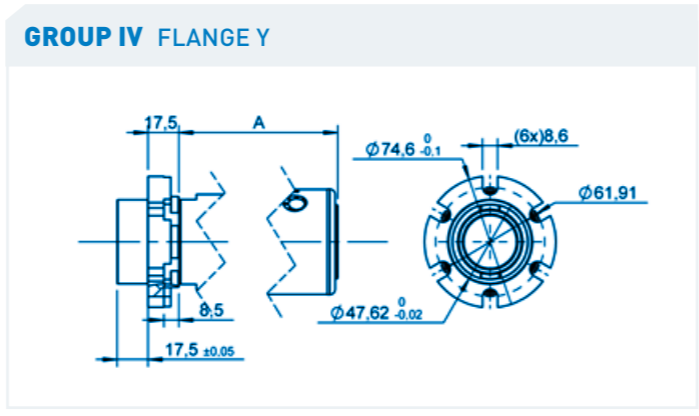
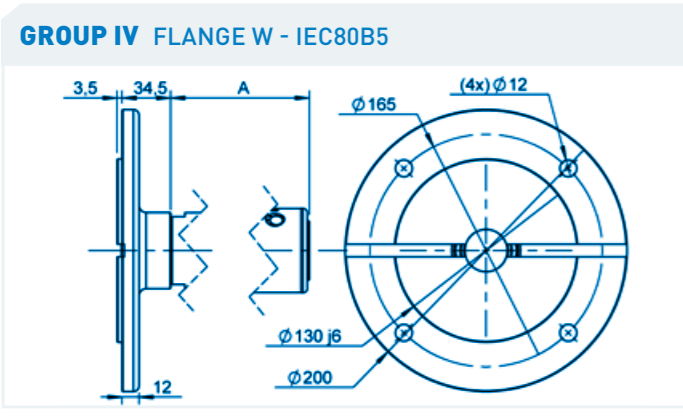
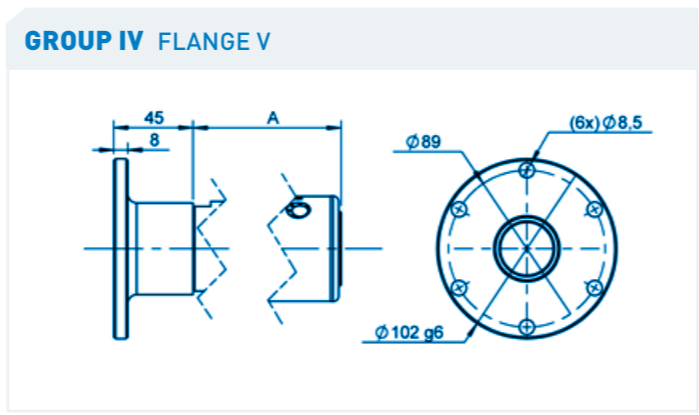
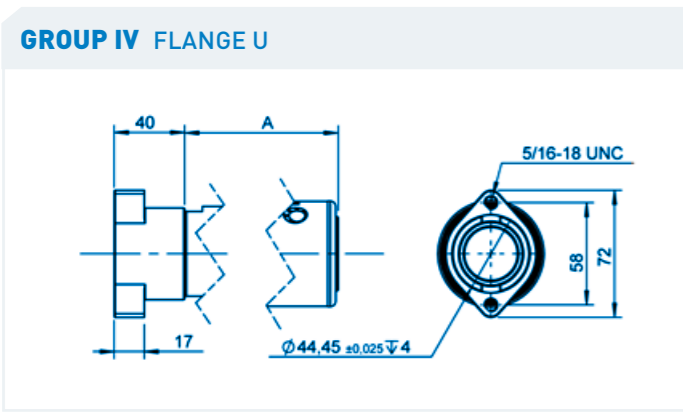
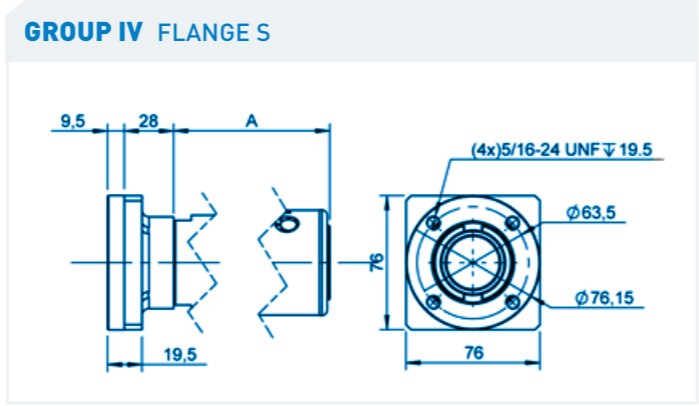
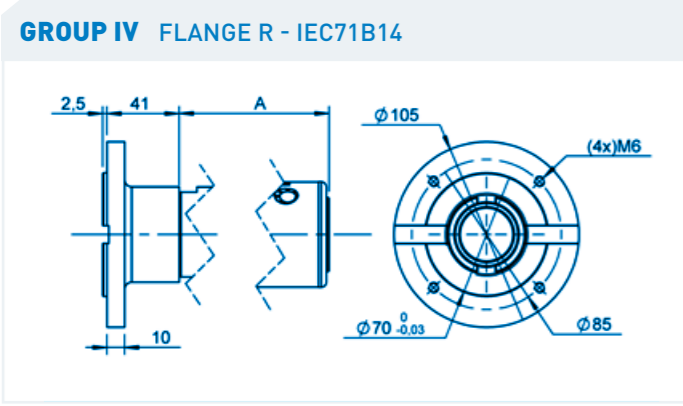
GROUP IV FLANGE N



GROUP IV FLANGE Q

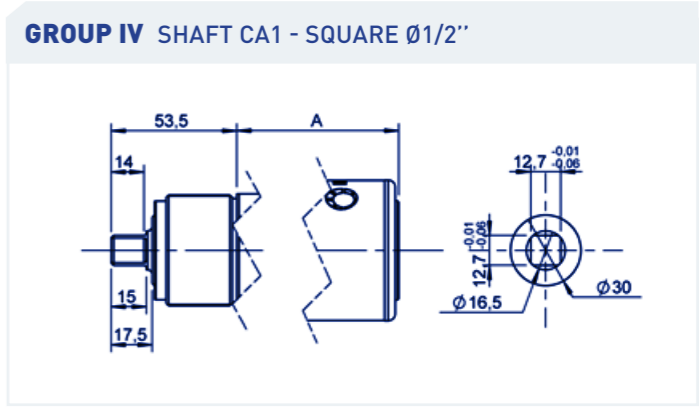
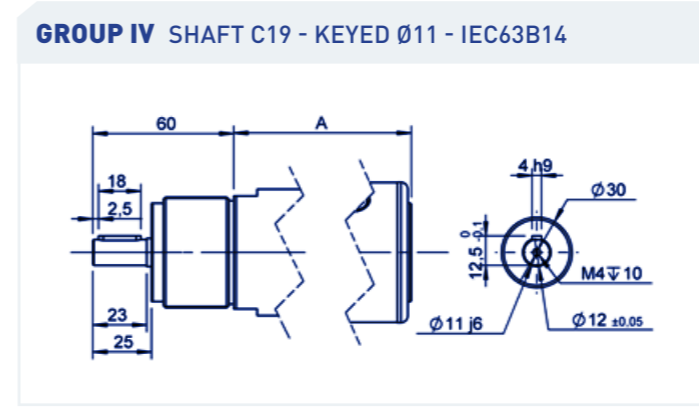
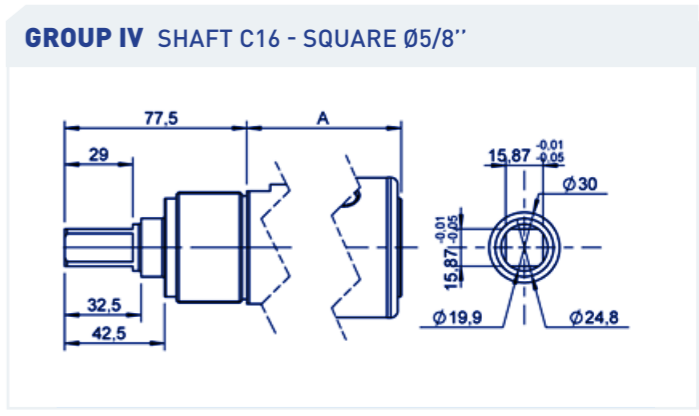
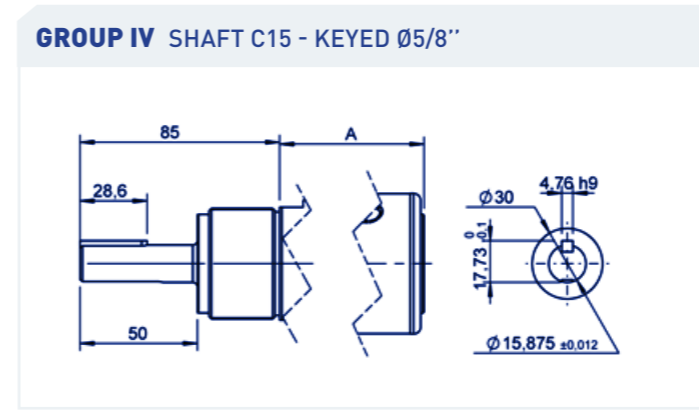
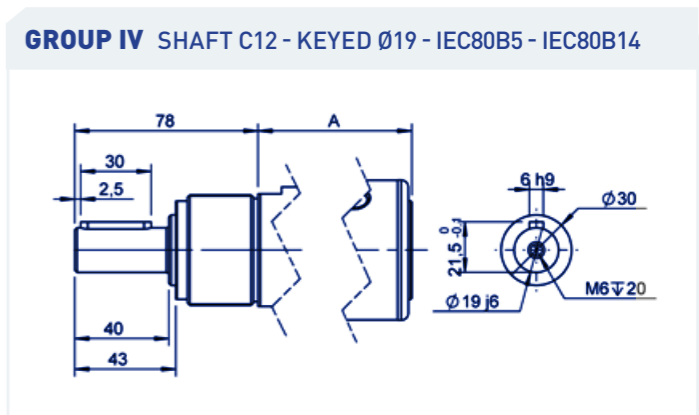
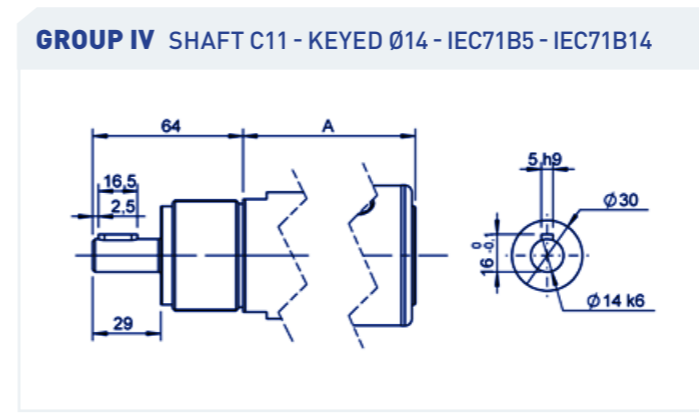
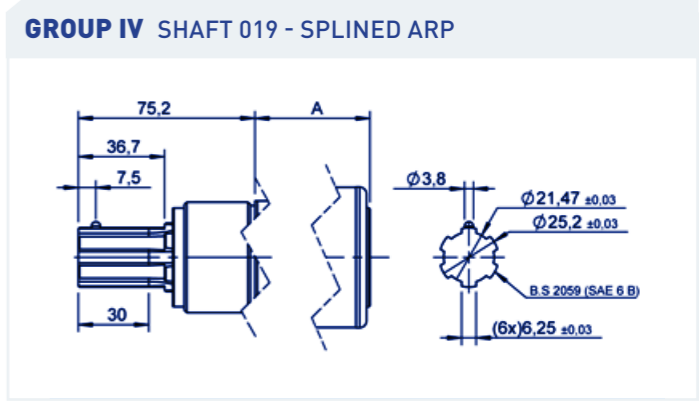
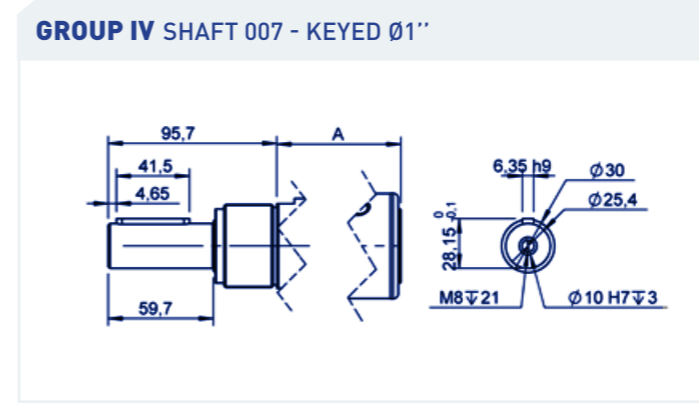


FLANGES **GROUP IV** (3/3) XTH 05 XTH 07 XTS 08 XTH 08 XTS 10 XTH 10 XTS 20 XTS 25

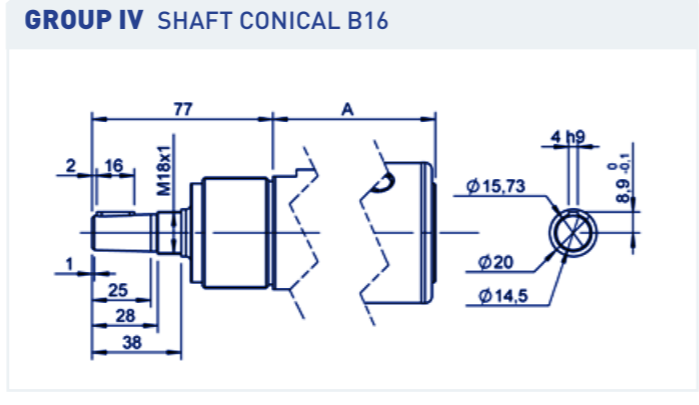
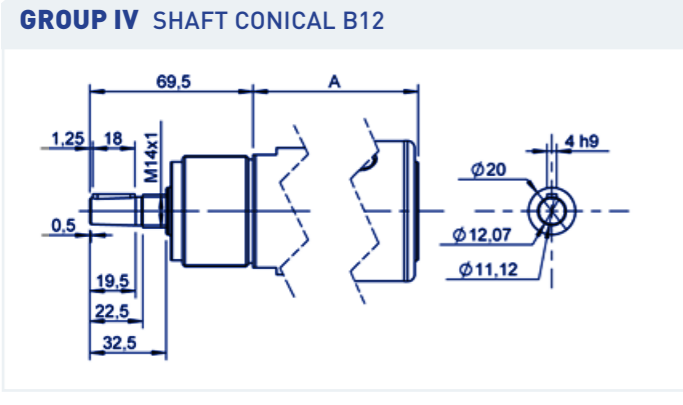
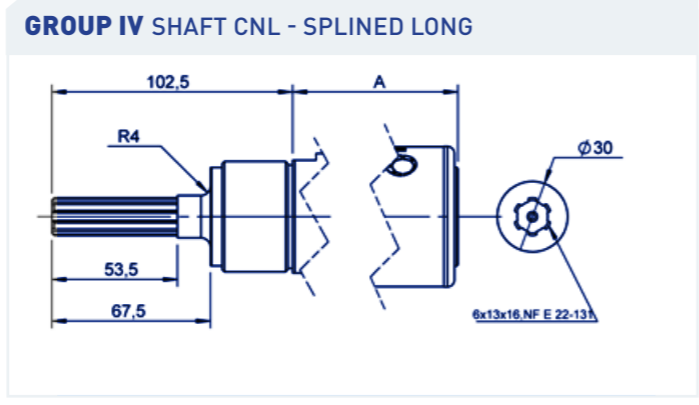
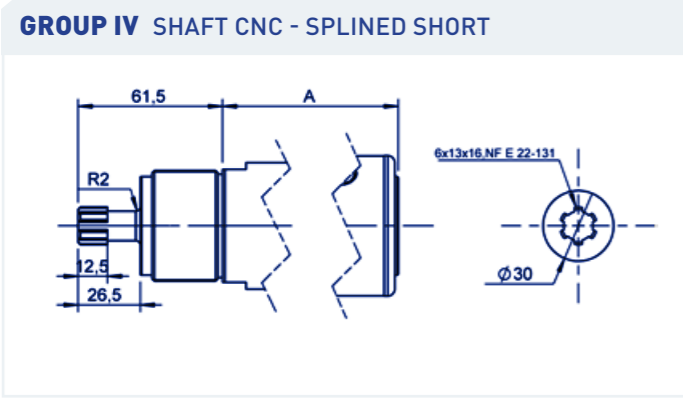
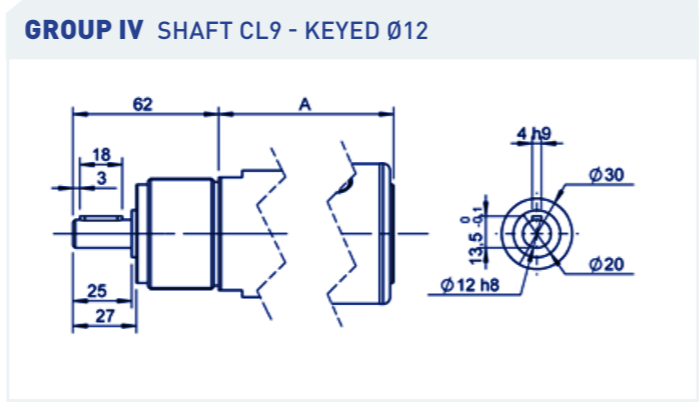
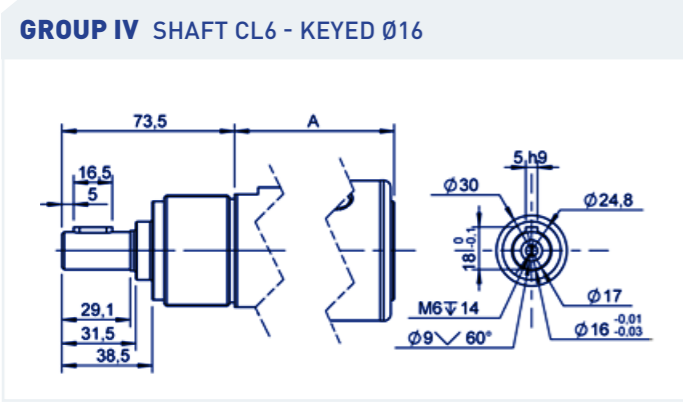
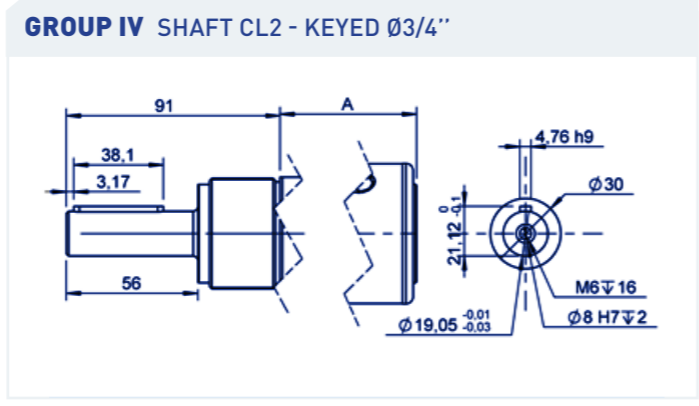
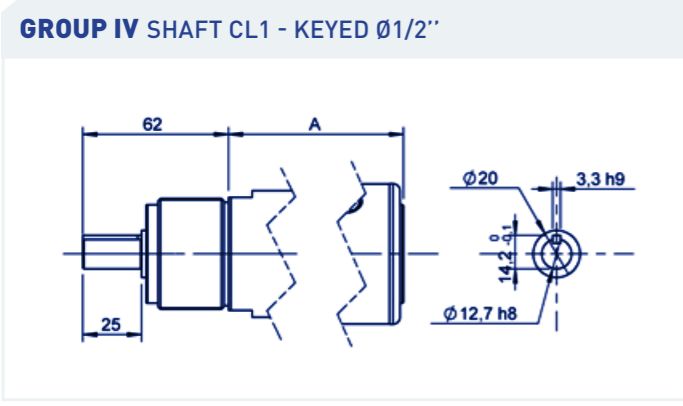


You didn't find your match ?
Contact us !

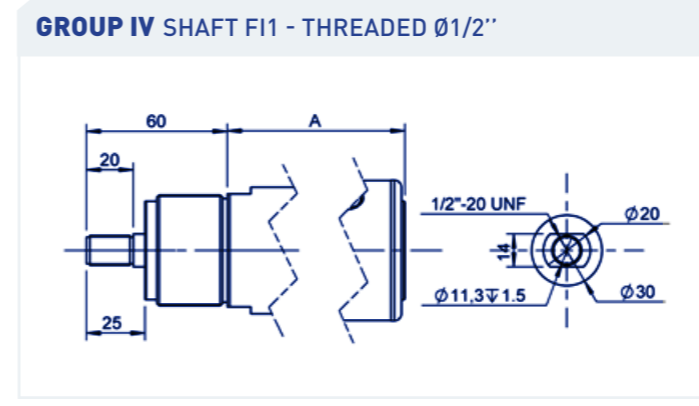
SHAFTS **GROUP IV** (1/3) XTH 05 XTH 07 XTS 08 XTH 08 XTS 10 XTH 10 XTS 20 XTS 25



SHAFTS **GROUP IV** (2/3) XTH 05 XTH 07 XTS 08 XTH 08 XTS 10 XTH 10 XTS 20 XTS 25



SHAFTS **GROUP IV** (3/3) XTH 05 XTH 07 XTS 08 XTH 08 XTS 10 XTH 10 XTS 20 XTS 25



You didn't find your match ?
Contact us !