



MAX POWER  
**1900 W**  
MAX TORQUE  
**840 Nm**

Twin brothers of the "10", the "20" series air motors offer the same versatility and are available with the same speed and torque ranges but **with even greater power.**

It contains the 3 same application families (Easy, Standard and Heavy duty) with the same configurations of right angle drive heads and integrated handles. **Ideal for applications as different as blasting, conveyors, lifting or integration in special machines.**

Like their little brothers, the "20" range air motors **can get an integrated speed controller**, which is indispensable for certain manual applications.



+ ACCESSORIES FOR THIS MOTOR	Reference
Filtration, pressure Regulation and Lubrication unit (FRL)	AC107
Safety Air Treatment Box (SAT Box)	AC118
With Pedal remote control	AC119
With handle remote control	AC120
With remote emergency kill switch	AC125
With remote E-Stop and pedal remote control	AC121
With remote E-Stop and handle remote control	AC122
Maintenance kits	
Maintenance kit for "20" series	AC304
Maintenance kit for lube free "20" series	AC314
Maintenance kit for kit start "20" series	AC324
Exhaust collector kit for "20" series	AC341
modec Oil Co-16	AC149
Control handles	
Safety control handle for non reversible "20" series	AC406
Safety control handle for reversible "20" series	AC404
Progressive control handle for non reversible "20" series	AC400
Progressive control handle for reversible "20" series	AC408
Filters et silencers	
Metallic standard silencer	AC182
Metallic standard inlet silencer (RV)	AC181
Plastic standard silencer	AC152
Plastic standard inlet silencer (RV)	AC183
Heavy duty silencer	AC156
Heavy duty inlet silencer (RV)	AC155
High flow air muffler	AC159
Exhaust silencer filter	AC161
Speed control muffler	AC174

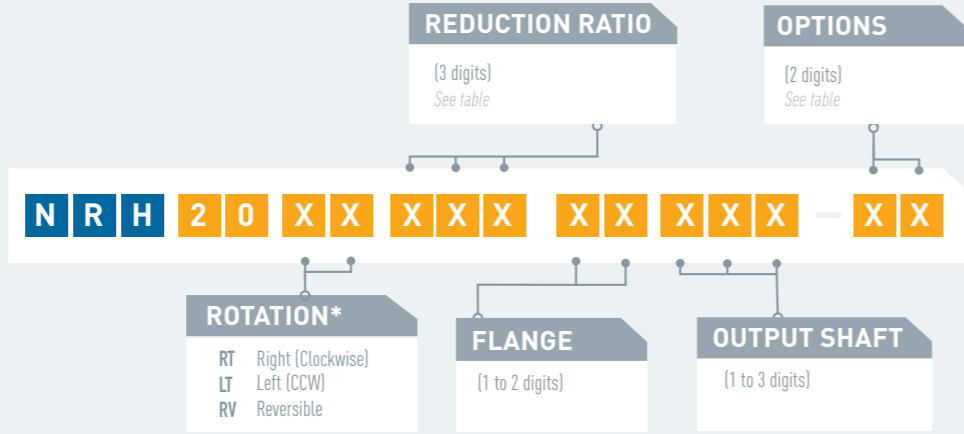
CONNECTION AND LUBRICATION				
Min. fittings Ø	Min. pipe Ø		Lubrication [6,2 bars]	
	In	Out		
10 mm / 0,4 In	16 mm / 0,6 In	13 mm / 0,5 In	20 mm / 0,8 In	7 drops / minute

CONVERSION TABLE		
Watt ► Horse power	Newton meter ► Pound feet	Millimeter ► Inch
Watt x 0,001341 = hp	Nm x 0,7376 = lb.ft	mm x 0,03937 = in
Bar ► Pound per square Inch	Normo Liter / minute ► Standard cubic feet per minute	Kilogram ► Pound
Bar x 14,5 = psi	NL / min x 0,03531 = scfm	Kg x 2,205 = lb



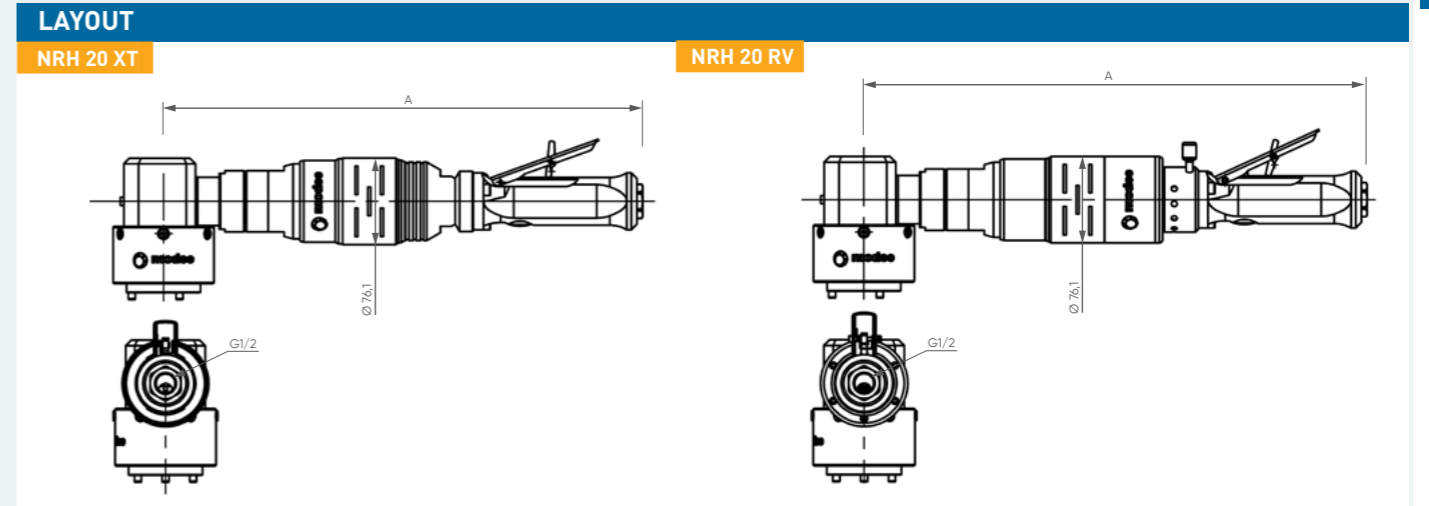
# MOTORS NRH 20

## POWER 1300-1500 W



\* rotation direction is defined when looking from the back of the motor

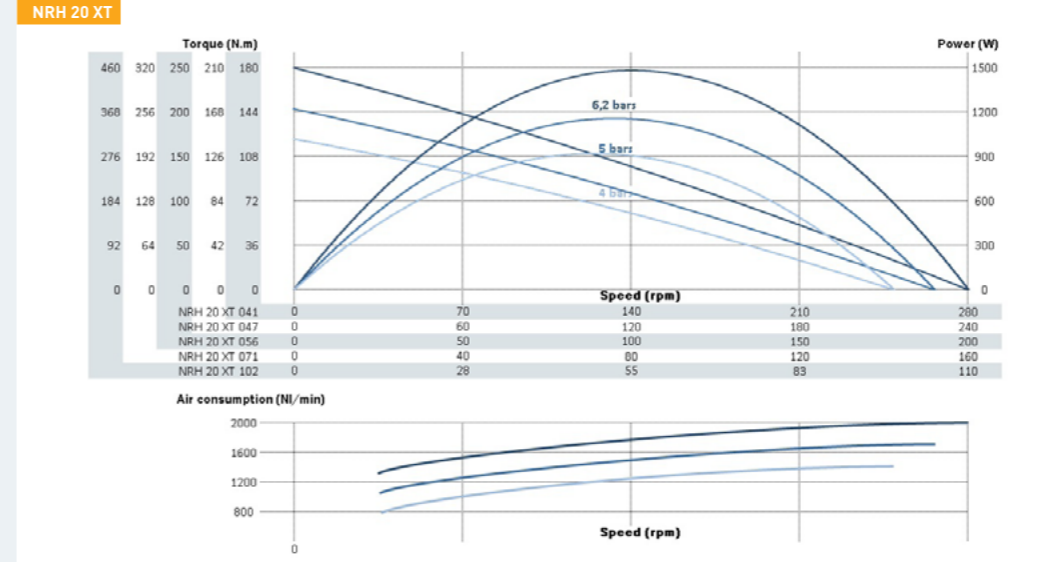
OPTIONS AVAILABLE FOR THE NRH 20 XT													OPTIONS AVAILABLE FOR THE NRH 20 RV						
Collected exhaust													ATEX certification						
ATEX certification													Left/Right switch						
Lubrication free													Lubrication free						
Kit start													Kit start						
Speed control													Code	03	12	16	17	29	30
Code	00	01	02	04	05	06	07	09	10	13	14	15	18	19	21	22	31	32	



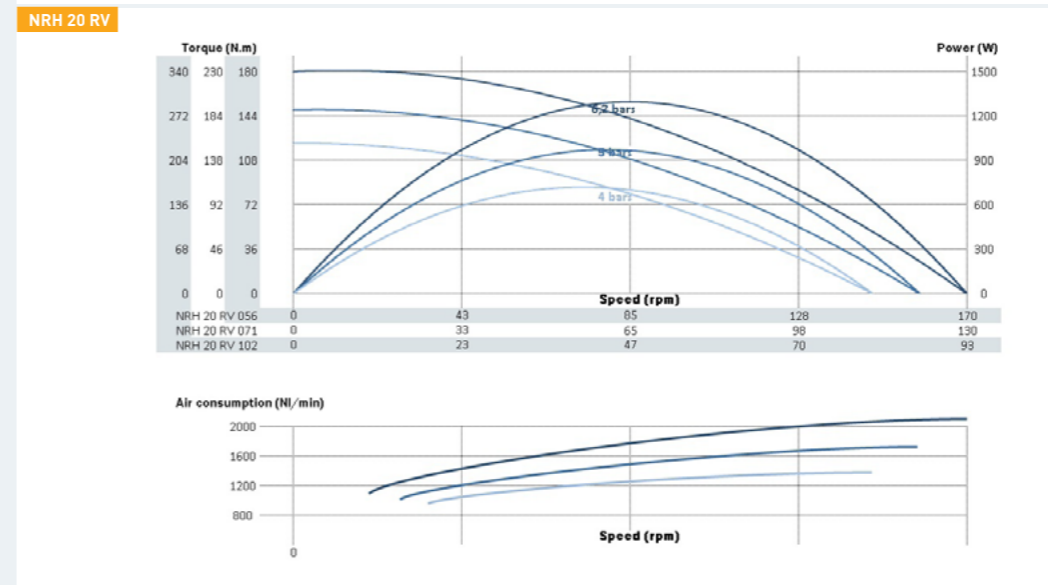
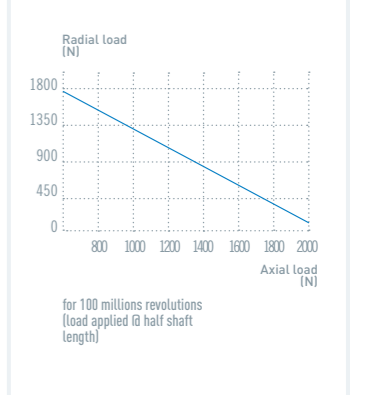
PERFORMANCES	NRH 20 XT												
	Air motor reference	Reduction ratio	Air supply pressure	Speed (rpm)		Torque (N.m)			Max Power (W)	Air cons (NI/min)	Dimensions		
				@ max Power	Free	@ max Power	Max (stall)	Starting torque			A (mm)	Ø (mm)	Weight (kg)
NRH 20 XT 041	41	6,2 bars	140	280	101	182	160	1486	1800	421,5	76,1	6,5	
		5 bars	133	265	84	149	131	1169	1500				
		4 bars	124	248	71	124	109	928	1200				
NRH 20 XT 047	47	6,2 bars	122	243	117	210	185	1486	1800	421,5	76,1	6,5	
		5 bars	115	230	97	171	151	1169	1500				
		4 bars	108	215	82	143	125	928	1200				
NRH 20 XT 056	56	6,2 bars	101	203	140	251	221	1486	1800	421,5	76,1	6,5	
		5 bars	96	192	116	205	180	1169	1500				
		4 bars	90	180	99	171	150	928	1200				
NRH 20 XT 071	71	6,2 bars	80	159	178	320	282	1486	1800	421,5	76,1	6,5	
		5 bars	75	151	148	261	230	1169	1500				
		4 bars	71	141	126	218	192	928	1200				
NRH 20 XT 102	102	6,2 bars	56	111	255	459	404	1486	1800	421,5	76,1	6,5	
		5 bars	53	105	212	374	329	1169	1500				
		4 bars	49	98	180	312	274	928	1200				
NRH 20 RV													
Air motor reference	Reduction ratio	Air supply pressure	Speed (rpm)		Torque (N.m)			Max Power (W)	Air cons (NI/min)	Dimensions			
			@ max Power	Free	@ max Power	Max (stall)	Starting torque			A (mm)	Ø (mm)	Weight (kg)	
NRH 20 RV 056	56	6,2 bars	85	169	145	184	162	1288	1800	443	76,1	7,1	
		5 bars	79	157	119	152	134	975	1500				
		4 bars	73	146	93	125	110	714	1200				
NRH 20 RV 071	71	6,2 bars	66	133	185	234	206	1288	1800	443	76,1	7,1	
		5 bars	62	123	151	194	171	975	1500				
		4 bars	57	115	119	159	140	714	1200				
NRH 20 RV 102	102	6,2 bars	46	93	265	336	295	1288	1800	443	76,1	7,1	
		5 bars	43	86	216	278	245	975	1500				
		4 bars	40	80	171	228	201	714	1200				

Data indicated in this table have an accuracy of +/- 5%

**POWER, SPEED, TORQUE AND AIR CONSUMPTION GRAPHS**



**MAXIMUM RADIAL & AXIAL LOAD**



**NOTES**

Notes area with horizontal lines for additional information.

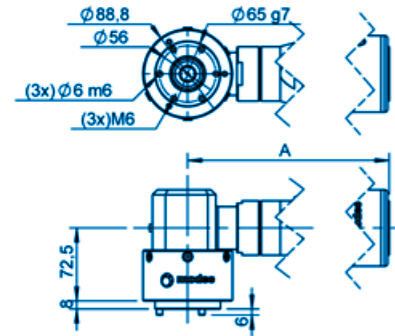


# FLANGES & SHAFTS

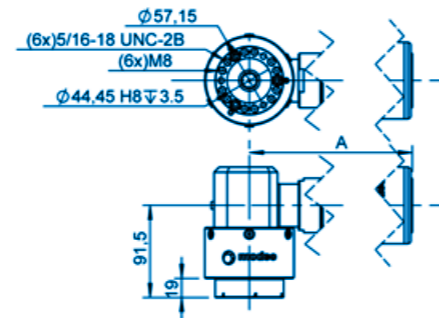
## FLANGES GROUP VIII

- XRZ 05
- XRZ 07
- XRH 08
- XRH 10
- XRH 20
- XRH 25

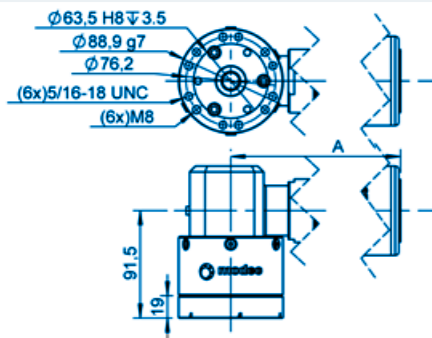
### GROUP VIII FLANGE AA



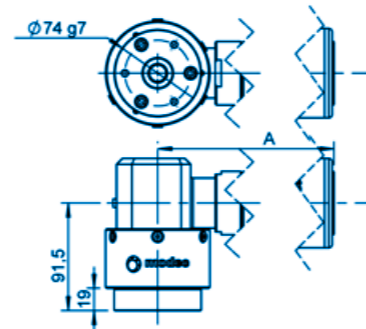
### GROUP VIII FLANGE AB



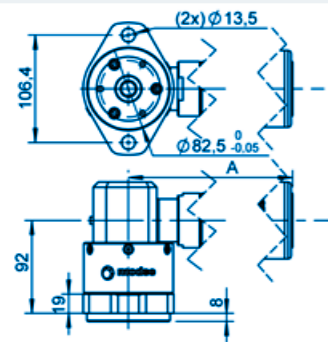
### GROUP VIII FLANGE AC



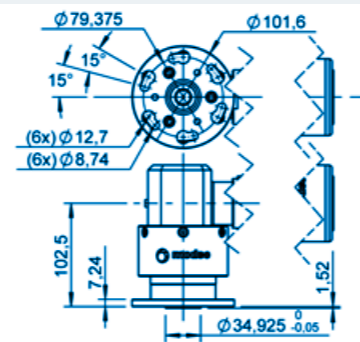
### GROUP VIII FLANGE AD



### GROUP VIII FLANGE AE



### GROUP VIII FLANGE Q



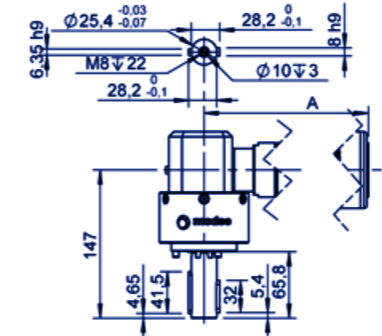
You didn't find your match ?

Contact us !

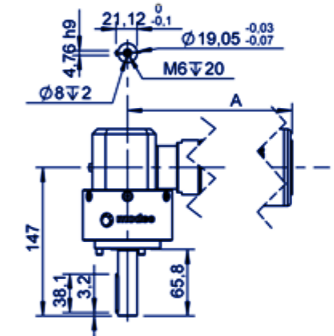
## SHAFTS GROUP VIII

- XRZ 05
- XRZ 07
- XRH 08
- XRH 10
- XRH 20
- XRH 25

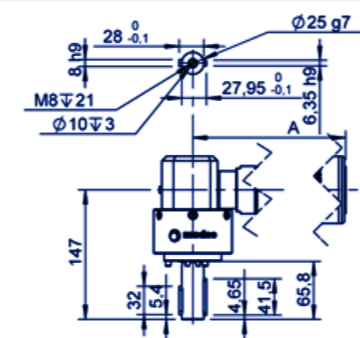
### GROUP VIII SHAFT 001 - KEYED Ø1"



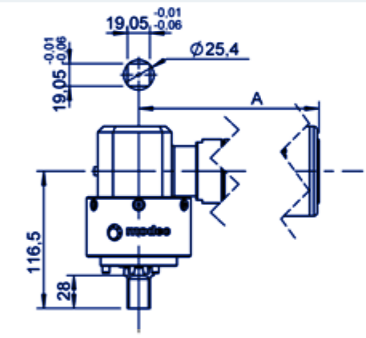
### GROUP VIII SHAFT 002 - KEYED Ø3/4"



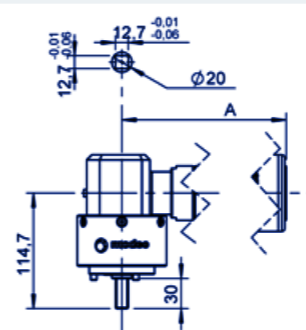
### GROUP VIII SHAFT 003 - KEYED Ø25



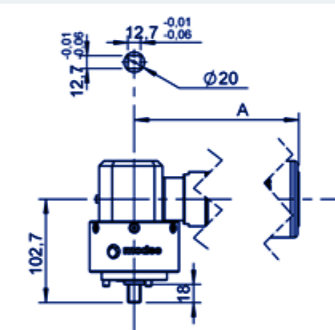
### GROUP VIII SHAFT 004 - SQUARE 3/4"



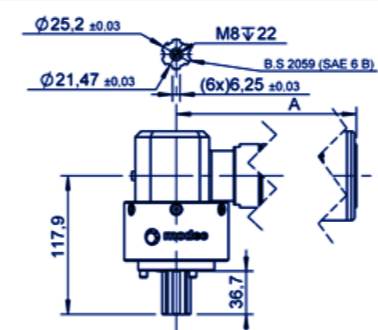
### GROUP VIII SHAFT 005 - SQUARE 1/2" LONG



### GROUP VIII SHAFT CA1 - SQUARE 1/2" SHORT



### GROUP VIII SHAFT CNW - SPLINED



You didn't find your match ?

Contact us !