

MAX POWER  
**710 W**  
MAX TORQUE  
**730 Nm**


"08" series air motors exist in many versions, straight shaft or right angle drive, with or without integrated control handle, and with many different flanges and output shafts available as standard.

That air motor is also available with 4 types of integrated gearboxes, enabling it to adapt to many different applications, whether high speed is required (Easy duty), good balance between speed and torque (Standard duty) or high torque and robustness is mandatory (Heavy duty and Super Heavy duty).

With a maximum power of 700 W, it is one of the most versatile air motors in the range.

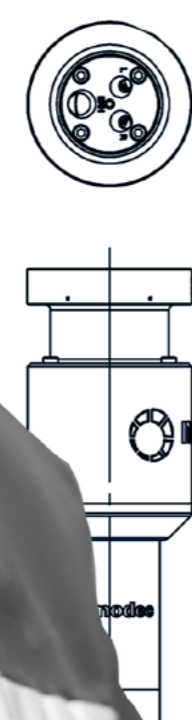
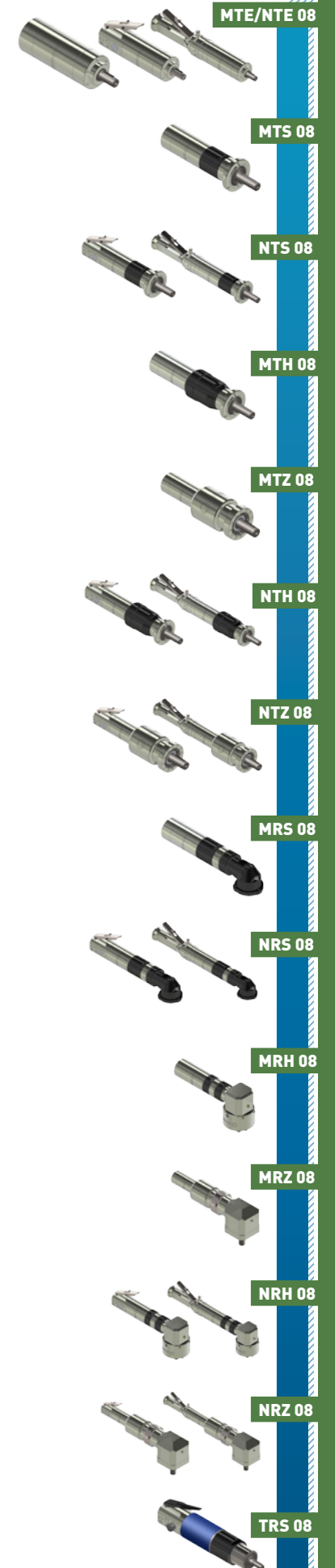
+ ACCESSORIES FOR THIS MOTOR	Reference
Filtration, pressure Regulation and Lubrication unit (FRL)	AC107
Safety Air Treatment Box (SAT Box)	AC118
With Pedal remote control	AC119
With handle remote control	AC120
With remote emergency kill switch	AC125
With remote E-Stop and pedal remote control	AC121
With remote E-Stop and handle remote control	AC122
Maintenance kits	
Maintenance kit for "08" series	AC302
Maintenance kit for lube free "08" series	AC312
Maintenance kit for kit start "08" series	AC322
Control handles	
Safety control handle for non reversible motor	AC415
Safety control handle for reversible motor	AC416
Progressive control handle for non reversible motor	AC417
Progressive control handle for reversible motor	AC418
modec Oil Co-16	AC149
Filters and silencers	
Metallic standard exhaust silencer	AC181
Metallic standard inlet silencer	AC180
Plastic standard exhaust silencer	AC183
Plastic standard inlet silencer	AC150
Heavy duty exhaust silencer	AC155
Heavy duty inlet silencer	AC154
Speed control muffler	AC172
High flow air muffler	AC158
Exhaust silencer filter	AC165

**CONNECTION AND LUBRICATION**

	Min. fittings Ø		Min. pipe Ø		Lubrication (6,2 bars)
	In	Out	In	Out	
	7 mm / 0,3 In	10 mm / 0,4 In	9 mm / 0,4 In	13 mm / 0,5 In	4 drops / minute

**CONVERSION TABLE**

Watt ► Horse power	Newton meter ► Pound feet	Millimeter ► Inch
Watt x 0,001341 = hp	Nm x 0,7376 = lb.ft	mm x 0,03937 = in
Bar ► Pound per square Inch	Normo Liter / minute ► Standard cubic feet per minute	Kilogram ► Pound
Bar x 14,5 = psi	NL / min x 0,03531 = scfm	Kg x 2,205 = lb





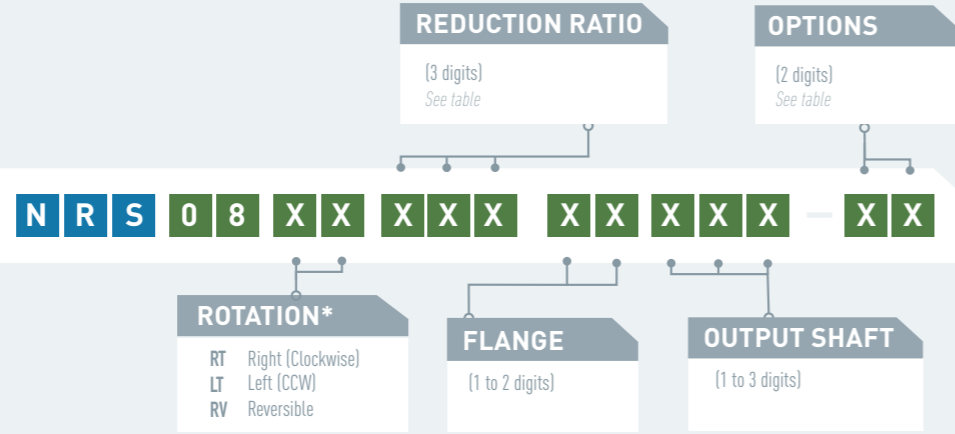
# MOTOR NRS 08

## POWER 370-430 W

NRS 08 XT



NRS 08 RV



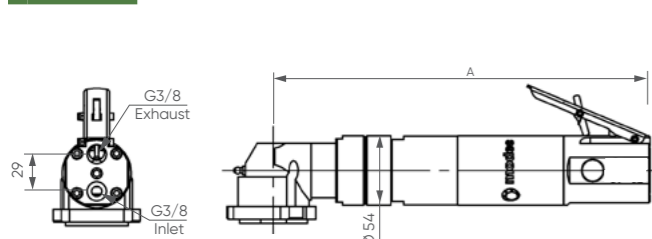
\* rotation direction is defined when looking from the back of the motor

PERFORMANCES	NRS 08 XT	Reduction ratio	Air supply pressure	Speed (rpm)		Torque (N.m)			Max Power (W)	Air cons (NL/min)	Dimensions		
				@ max Power	Free	@ max Power	Max (stall)	Starting torque			A (mm)	Ø (mm)	Weight (kg)
NRS 08 XT 006	6	6,2 bars	1242	2483	3,3	6,5	5,7	433	900	268	54	3,2	
			5 bars	1116	2233	2,8	5,2	4,6	329				750
			4 bars	1016	2033	2,3	4,1	3,6	244				600
NRS 08 XT 008	8	6,2 bars	1036	2073	4,0	7,8	6,8	433	900	268	54	3,2	
			5 bars	932	1864	3,4	6,3	5,5	329				750
			4 bars	848	1697	2,7	4,9	4,3	244				600
NRS 08 XT 010	10	6,2 bars	813	1626	5,1	9,9	8,7	433	900	268	54	3,2	
			5 bars	731	1462	4,3	8,0	7,0	329				750
			4 bars	666	1331	3,5	6,2	5,5	244				600
NRS 08 XT 014	14	6,2 bars	568	1135	7,3	14	12	433	900	268	54	3,2	
			5 bars	510	1021	6,2	11	10	329				750
			4 bars	465	929	5,0	8,9	7,8	244				600
NRS 08 XT 031	31	6,2 bars	265	529	14	28	25	401	900	295	54	3,5	
			5 bars	242	483	12	23	20	301				750
			4 bars	219	437	10	19	16	223				600
NRS 08 XT 037	37	6,2 bars	221	442	17	34	30	401	900	295	54	3,5	
			5 bars	202	403	14	28	24	301				750
			4 bars	183	365	12	22	20	223				600
NRS 08 XT 047	47	6,2 bars	173	347	22	43	38	401	900	295	54	3,5	
			5 bars	158	316	18	35	31	301				750
			4 bars	143	286	15	29	25	223				600
NRS 08 XT 056	56	6,2 bars	145	289	26	51	45	401	900	295	54	3,5	
			5 bars	132	264	22	42	37	301				750
			4 bars	120	239	18	34	30	223				600
NRS 08 XT 071	71	6,2 bars	114	227	34	66	58	401	900	295	54	3,5	
			5 bars	104	207	28	54	47	301				750
			4 bars	94	188	23	44	38	223				600
NRS 08 XT 080	80	6,2 bars	101	202	38	74	65	401	900	295	54	3,5	
			5 bars	92	184	31	61	53	301				750
			4 bars	83	167	26	49	43	223				600
NRS 08 XT 102	102	6,2 bars	79	158	48	94	83	401	900	295	54	3,5	
			5 bars	72	145	40	77	68	301				750
			4 bars	65	131	33	62	55	223				600
NRS 08 XT 147	147	6,2 bars	55	110	69	135	119	401	900	319	54	3,7	
			5 bars	50	101	57	111	98	301				750
			4 bars	46	91	47	90	79	223				600
NRS 08 XT 176	176	6,2 bars	46	92	83	162	142	401	900	319	54	3,7	
			5 bars	42	84	68	133	117	301				750
			4 bars	38	76	56	107	94	223				600

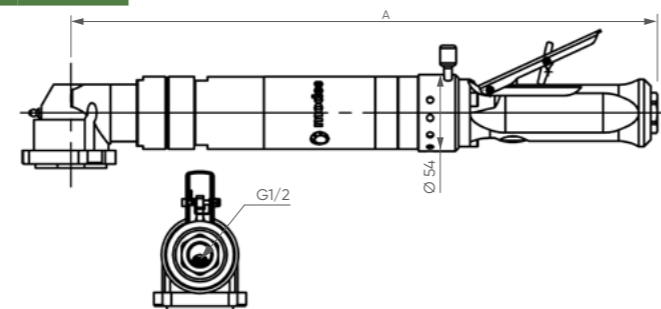
Data indicated in this table have an accuracy of +/- 5%

### LAYOUT

NRS 08 XT



NRS 08 RV



PERFORMANCES	NRS 08 RV	Reduction ratio	Air supply pressure	Speed (rpm)		Torque (N.m)			Max Power (W)	Air cons (NL/min)	Dimensions		
				@ max Power	Free	@ max Power	Max (stall)	Starting torque			A (mm)	Ø (mm)	Weight (kg)
NRS 08 RV 006	6	6,2 bars	1177	2355	3,4	5,5	4,8	420	950	406	57	3,6	
			5 bars	1048	2095	2,9	4,7	4,1	320				750
			4 bars	942	1884	2,4	4,0	3,5	239				600
NRS 08 RV 008	8	6,2 bars	983	1966	4,1	6,5	5,8	420	950	406	57	3,6	
			5 bars	875	1749	3,5	5,6	5,0	320				750
			4 bars	787	1573	2,9	4,8	4,2	239				600
NRS 08 RV 010	10	6,2 bars	771	1542	5,2	8,3	7,3	420	950	406	57	3,6	
			5 bars	686	1372	4,5	7,2	6,3	320				750
			4 bars	617	1234	3,7	6,1	5,4	239				600
NRS 08 RV 014	14	6,2 bars	538	1076	7,5	12	11	420	950	406	57	3,6	
			5 bars	479	958	6,4	10	9,1	320				750
			4 bars	431	861	5,3	8,8	7,7	239				600
NRS 08 RV 031	31	6,2 bars	251	502	15	23	21	395	950	438	57	3,8	
			5 bars	227	454	12	19	17	296				750
			4 bars	209	417	10	16	14	216				600
NRS 08 RV 037	37	6,2 bars	209	419	18	28	25	395	950	438	57	3,8	
			5 bars	190	379	15	23	20	296				750
			4 bars	174	348	12	19	16	216				600
NRS 08 RV 047	47	6,2 bars	164	328	23	36	31	395	950	438	57	3,8	
			5 bars	149	298	19	30	26	296				750
			4 bars	137	273	15	24	21	216				600
NRS 08 RV 056	56	6,2 bars	137	274	27	43	38	395	950	438	57	3,8	
			5 bars	124	248	23	35	31	296				750
			4 bars	114	228	18	29	25	216				600
NRS 08 RV 071	71	6,2 bars	108	215	35	55	48	395	950	438	57	3,8	
			5 bars	97	195	29	45	40	296				750
			4 bars	89	179	23	36	32	216				600
NRS 08 RV 080	80	6,2 bars	96	191	39	61	54	395	950	438	57	3,8	
			5 bars	87	173	33	51	45	296				750
			4 bars	80	159	26	41	36	216				600
NRS 08 RV 102	102	6,2 bars	75	150	50	78	69	395	950	438	57	3,8	
			5 bars	68	136	42	65	57	296				750
			4 bars	62	125	33	52	46	216				600
NRS 08 RV 147	147	6,2 bars	52	105	67	108	95	368	950	462	57	4,1	
			5 bars	46	93	57	91	80	276				750
			4 bars	42	83	48	74	65	207				600
NRS 08 RV 176	176	6,2 bars	44	88	80	129	114	368	950	462	57	4,1	
			5 bars	39	77	68	109	96	276				750
			4 bars	35	69	57	89	78	207				600
NRS 08 RV 211	211	6,2 bars	37	73	96	155	136	368	950	462	57	4,1	
			5 bars	32	65	82	131	115	276				750
			4 bars	29	58	68	106	93	207				600

Data indicated in this table have an accuracy of +/- 5%

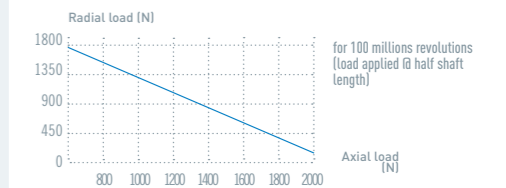
### OPTIONS AVAILABLE FOR THE NRS 08 XT

Collected exhaust	<input type="checkbox"/>	<input type="checkbox"/>	<input type="checkbox"/>	<input type="checkbox"/>	<input type="checkbox"/>
ATEX	<input type="checkbox"/>	<input type="checkbox"/>	<input type="checkbox"/>	<input type="checkbox"/>	<input type="checkbox"/>
Lubrication free	<input type="checkbox"/>	<input type="checkbox"/>	<input type="checkbox"/>	<input type="checkbox"/>	<input type="checkbox"/>
Kit start	<input type="checkbox"/>	<input type="checkbox"/>	<input type="checkbox"/>	<input type="checkbox"/>	<input type="checkbox"/>
Code	01	07	09	10	21 22

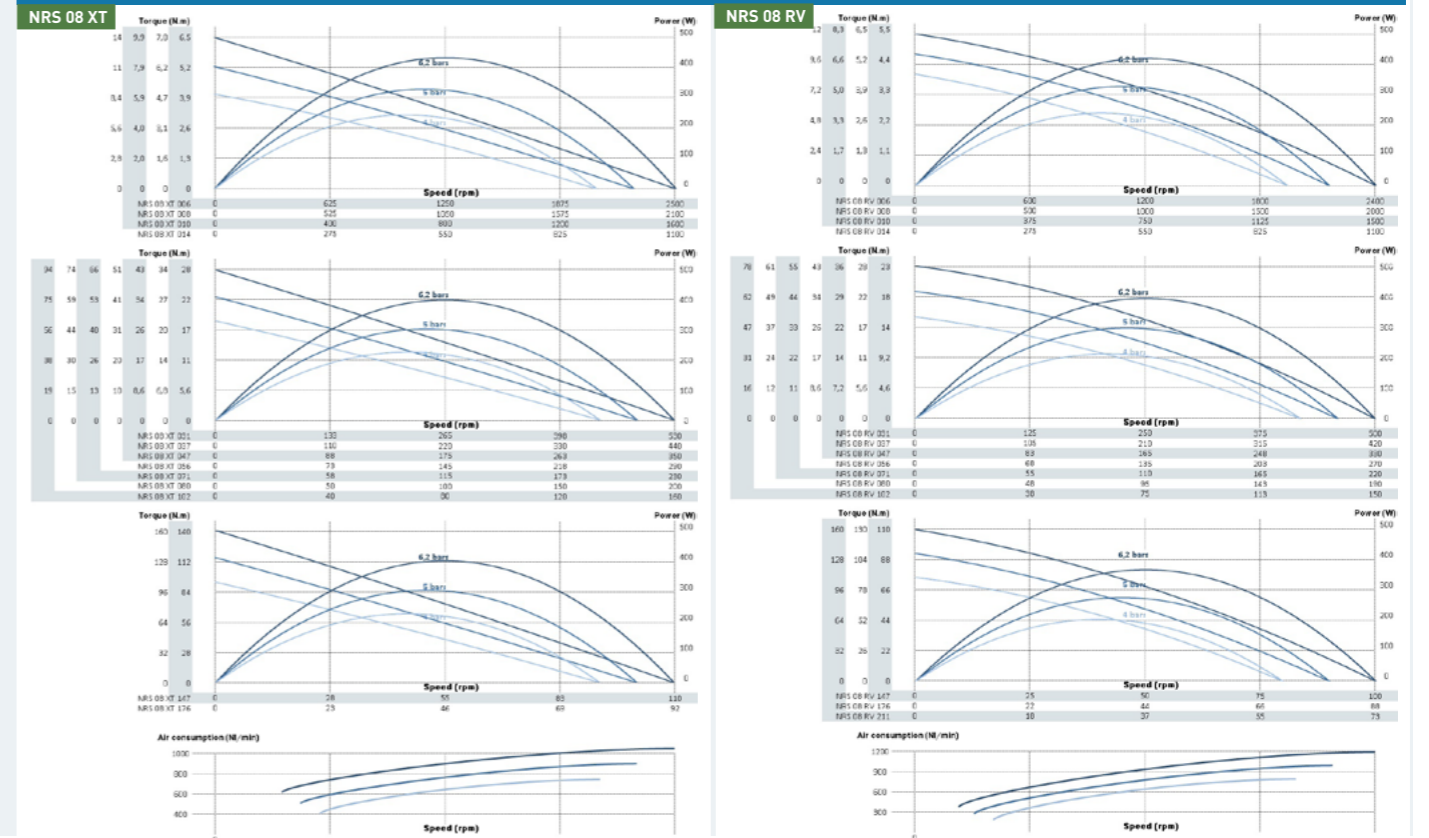
### OPTIONS AVAILABLE FOR THE NRS 08 RV

ATEX certification	<input type="checkbox"/>	<input type="checkbox"/>	<input type="checkbox"/>	<input type="checkbox"/>	<input type="checkbox"/>
Left/Right switch	<input type="checkbox"/>	<input type="checkbox"/>	<input type="checkbox"/>	<input type="checkbox"/>	<input type="checkbox"/>
Lubrication free	<input type="checkbox"/>	<input type="checkbox"/>	<input type="checkbox"/>	<input type="checkbox"/>	<input type="checkbox"/>
Kit start	<input type="checkbox"/>	<input type="checkbox"/>	<input type="checkbox"/>	<input type="checkbox"/>	<input type="checkbox"/>
Code	03	12	16	17	29 30

### MAXIMUM RADIAL & AXIAL LOAD



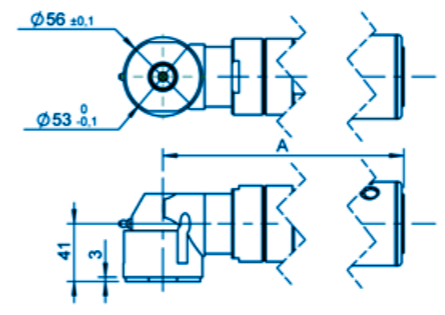
### POWER, SPEED, TORQUE AND AIR CONSUMPTION GRAPHS



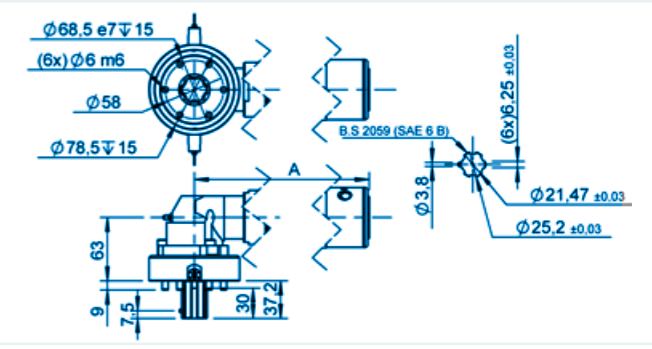
FLANGES **GROUP VII**

- XRH 05
- XRH 07
- XRS 08
- XRS 10
- XRS 20
- XRS 25

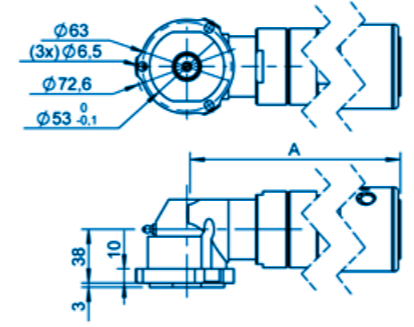
**GROUP VII** FLANGE AF



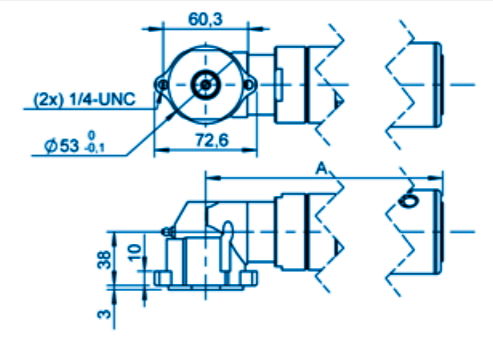
**GROUP VII** FLANGE AG WITH SHAFT 013



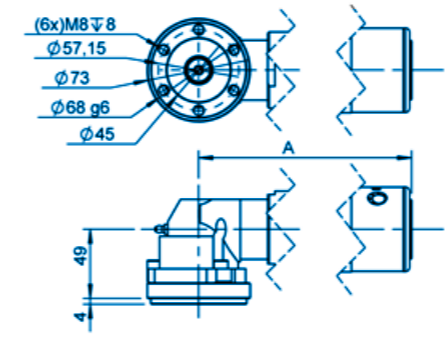
**GROUP VII** FLANGE B



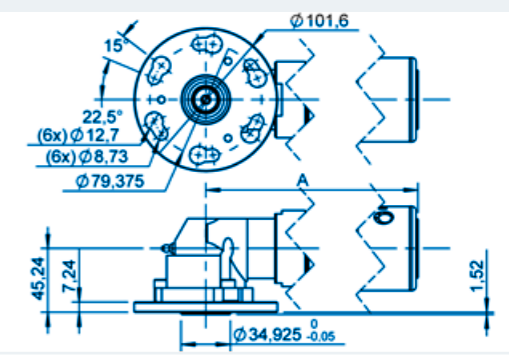
**GROUP VII** FLANGE E



**GROUP VII** FLANGE M



**GROUP VII** FLANGE Q



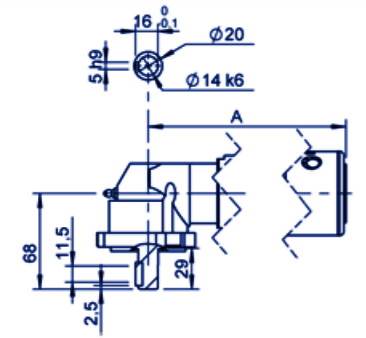
You didn't find your match ?

Contact us !

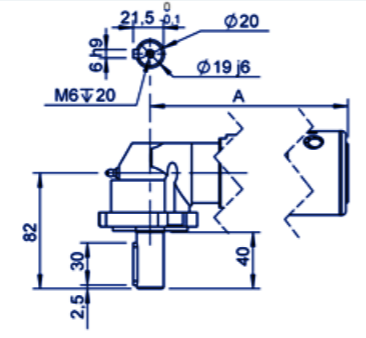
SHAFTS **GROUP VII** (1/2)

- XRH 05
- XRH 07
- XRS 08
- XRS 10
- XRS 20
- XRS 25

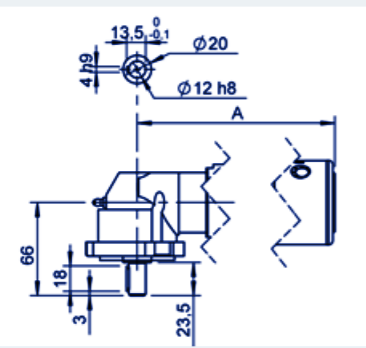
**GROUP VII** SHAFT 021 - KEYED Ø14



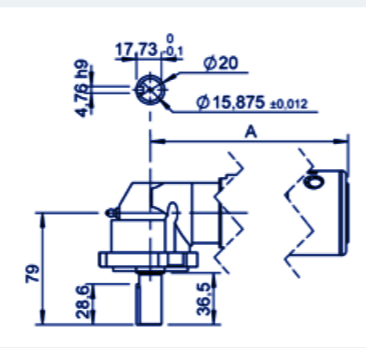
**GROUP VII** SHAFT C12 - KEYED Ø19



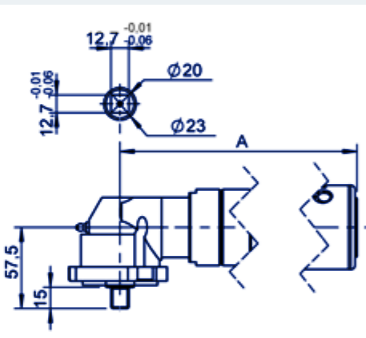
**GROUP VII** SHAFT C13 - KEYED Ø12



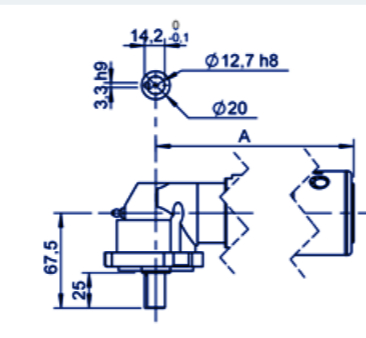
**GROUP VII** SHAFT C14 - KEYED Ø5/8"



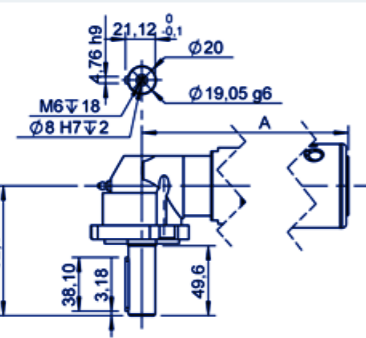
**GROUP VII** SHAFT CA1 - SQUARE 1/2"



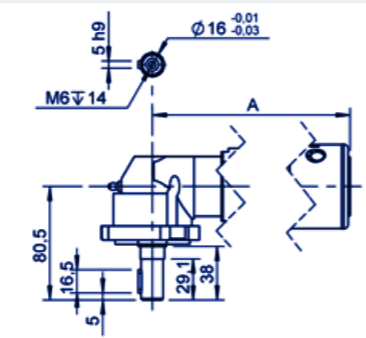
**GROUP VII** SHAFT CL1 - KEYED Ø1/2"



**GROUP VII** SHAFT CL2 - KEYED Ø3/4"



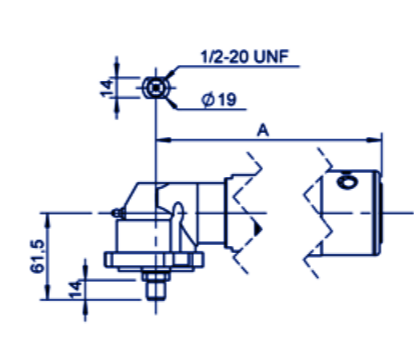
**GROUP VII** SHAFT CL6 - KEYED Ø16



SHAFTS **GROUP VII** (2/2)

- XRH 05
- XRH 07
- XRS 08
- XRS 10
- XRS 20
- XRS 25

**GROUP VII** SHAFT F11 - THREADED Ø1/2"



You didn't find your match ?  
  
Contact us !