



MAX POWER
1300 W
MAX TORQUE
1000 Nm

Powerful and compact, "10" series air motors can develop more than 1200 W and weigh only 2kg for a 60 mm diameter and a total length that can be as short as 155 mm. This makes it one of the highest power-to-weight ratio air motor on the market.

Available in 4 families (Easy, Standard, Heavy and Super heavy duty) with several types of gearboxes and right angle heads, it can develop up to 1000 Nm torque.

The wide variety of flanges and shafts allows the "10" range air motors to be easily fitted to any machine for a wide range of applications.



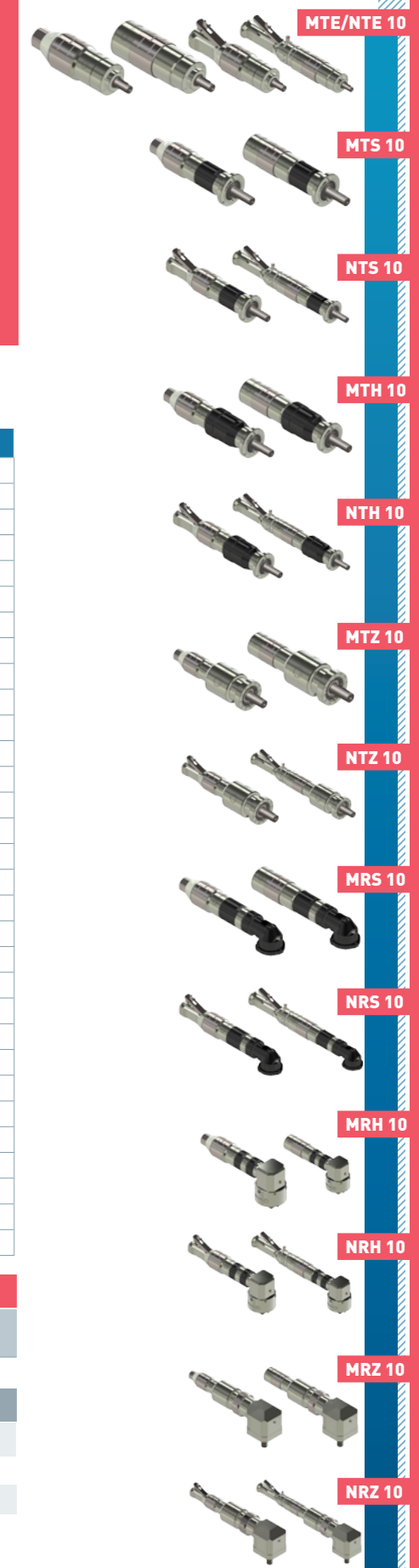
+ ACCESSORIES FOR THIS MOTOR	Reference
Filtration, pressure Regulation and Lubrication unit (FRL)	AC107
Safety Air Treatment Box (SAT Box)	AC118
With Pedal remote control	AC119
With handle remote control	AC120
With remote emergency kill switch	AC125
With remote E-Stop and pedal remote control	AC121
With remote E-Stop and handle remote control	AC122
Maintenance kits	
Maintenance kit for "10 XT" series	AC303
Maintenance kit for "10 RV" series	AC308
Maintenance kit for lube free "10 XT" series	AC313
Maintenance kit for lube free "10 RV" series	AC318
Maintenance kit for kit start "10 XT" series	AC323
Maintenance kit for kit start "10 RV" series	AC328
Exhaust collector kit for "10" series	AC340
modec Oil Co-16	AC149
Control handles	
Safety control handle for non reversible "10" series	AC406
Safety control handle for reversible "10" series	AC404
Progressive control handle for non reversible "10" series	AC400
Progressive control handle for reversible "10" series	AC408
Filters and silencers	
Metallic standard silencer	AC182
Metallic standard inlet silencer (RV)	AC181
Plastic standard silencer	AC152
Plastic standard inlet silencer (RV)	AC183
Heavy duty silencer	AC156
Heavy duty inlet silencer (RV)	AC155
High flow air muffler	AC158
Exhaust silencer filter	AC165
Speed control muffler	AC174

CONNECTION AND LUBRICATION

Min. fittings Ø	Min. pipe Ø		Lubrication (6,2 bars)
	In	Out	
10 mm / 0,4 In	16 mm / 0,6 In	13 mm / 0,5 In 20 mm / 0,8 In	6 drops / minute

CONVERSION TABLE

Watt ▶ Horse power	Newton meter ▶ Pound feet	Millimeter ▶ Inch
Watt x 0,001341 = hp	Nm x 0,7376 = lb.ft	mm x 0,03937 = in
Bar ▶ Pound per square Inch	Normo Liter / minute ▶ Standard cubic feet per minute	Kilogram ▶ Pound
Bar x 14,5 = psi	NL / min x 0,03531 = scfm	Kg x 2,205 = lb



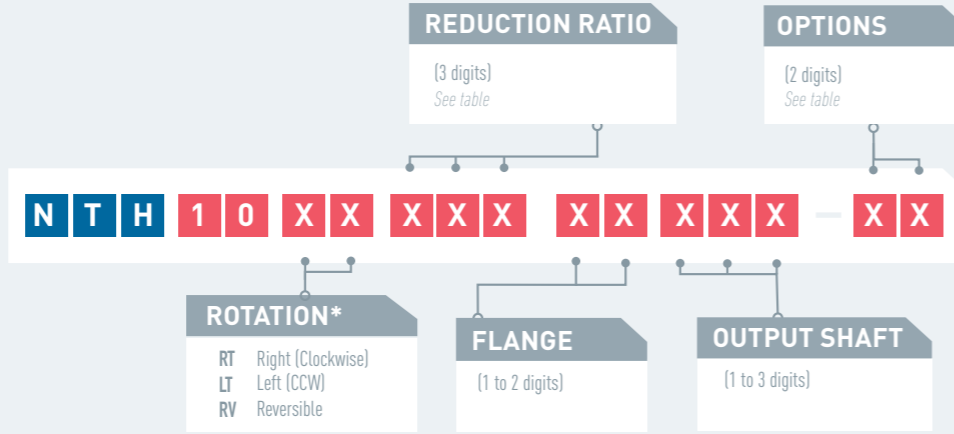
MOTOR NTH 10

POWER 800-1150 W



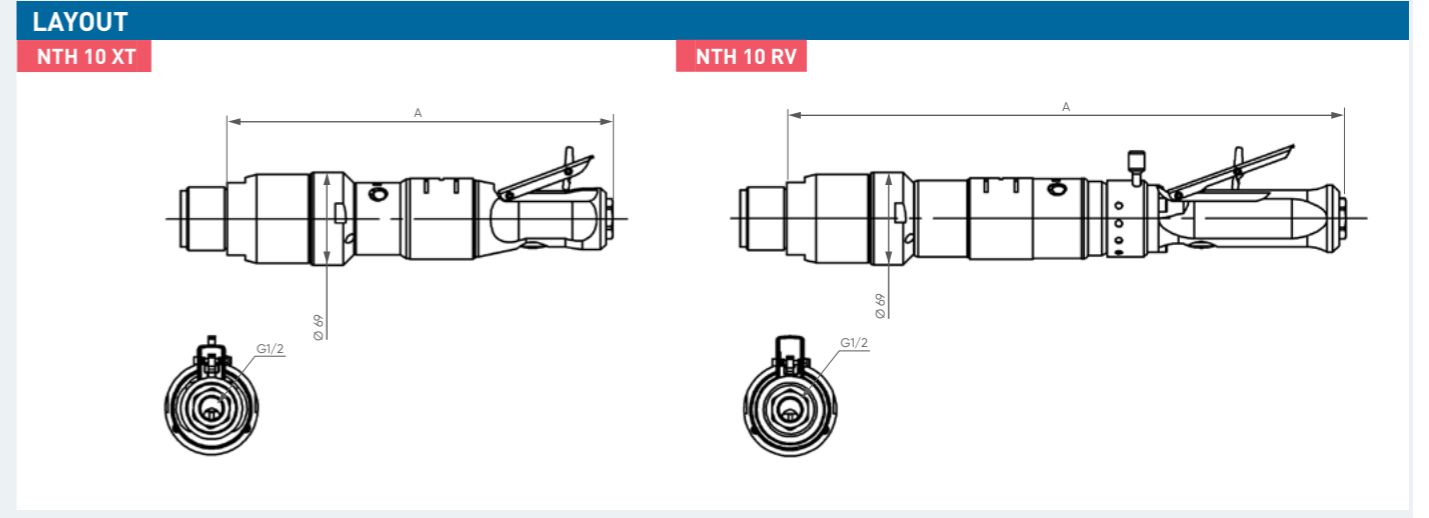
NTH 10 XT

NTH 10 RV



* rotation direction is defined when looking from the back of the motor

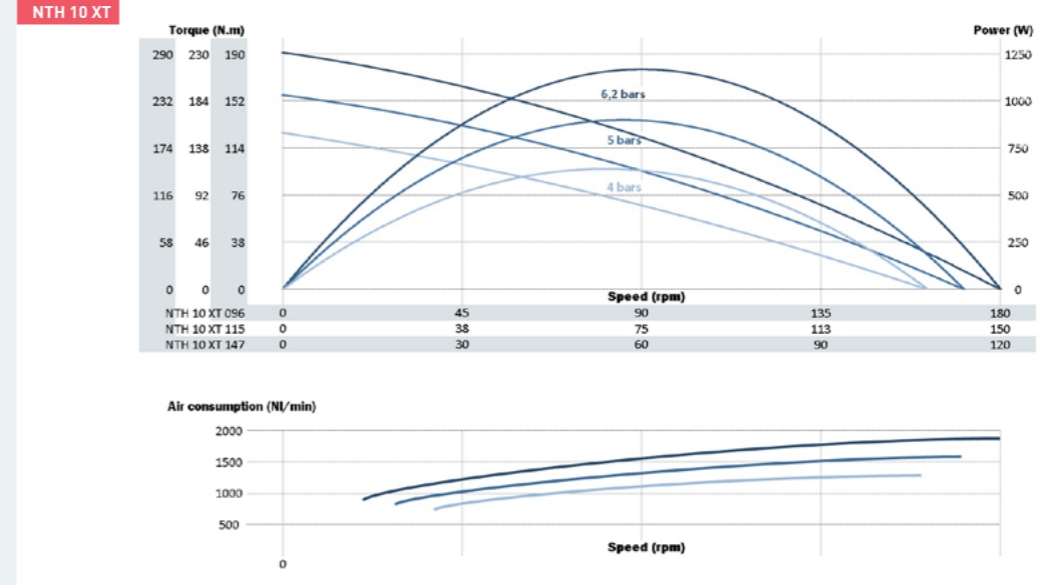
OPTIONS AVAILABLE FOR THE NTH10XT													OPTIONS AVAILABLE FOR THE NTH10RV											
Collected exhaust																								
ATEX certification																								
Lubrication free																								
Kit start																								
Speed control																								
Code	00	01	02	04	05	06	07	09	10	13	14	15	18	19	21	22	31	32	03	12	16	17	29	30



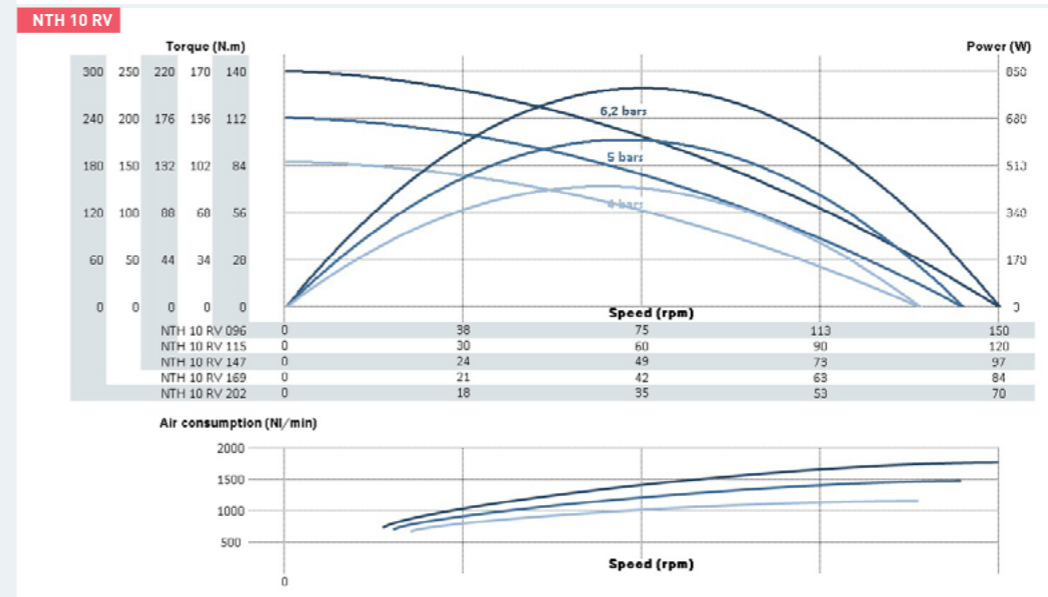
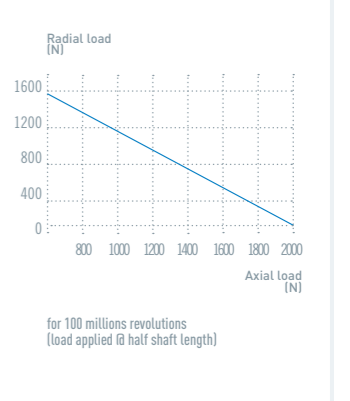
PERFORMANCES	NTH 10 XT													
	Air motor reference	Reduction ratio	Air supply pressure		Speed (rpm)		Torque (N.m)			Max Power (W)	Air cons (Nl/min)	Dimensions		
			@ max Power	Free	@ max Power	Max (stall)	Starting torque	A (mm)	Ø (mm)			Weight (kg)		
NTH 10 XT 096	96	6 bars	90	181	122	191	157	1155	1600	312,5	69	4,0		
		5 bars	85	170	100	157	129	890	1300					
		4 bars	81	161	76	127	104	641	1000					
	NTH 10 XT 115	115	6 bars	75	151	146	229	188	1155	1600	312,5	69		4,0
			5 bars	71	142	120	188	154	890	1300				
			4 bars	67	134	91	152	124	641	1000				
	NTH 10 XT 147	147	6 bars	59	118	186	292	239	1155	1600	312,5	69		4,0
			5 bars	56	111	153	240	197	890	1300				
			4 bars	53	105	116	193	158	641	1000				
NTH 10 RV														
Air motor reference	Reduction ratio	Air supply pressure		Speed (rpm)		Torque (N.m)			Max Power (W)	Air cons (Nl/min)	Dimensions			
		@ max Power	Free	@ max Power	Max (stall)	Starting torque	A (mm)	Ø (mm)			Weight (kg)			
NTH 10 RV 096	96	6 bars	74	147	102	142	125	787	1400	442	69	3,7		
		5 bars	70	139	83	114	101	604	1200					
		4 bars	65	129	64	88	77	434	1000					
	NTH 10 RV 115	115	6 bars	62	123	122	171	150	787	1400	442	69	3,7	
			5 bars	58	116	99	137	120	604	1200				
			4 bars	54	108	77	105	93	434	1000				
	NTH 10 RV 147	147	6 bars	48	97	156	217	191	787	1400	442	69	3,7	
			5 bars	46	91	127	175	154	604	1200				
			4 bars	42	85	98	134	118	434	1000				
NTH 10 RV 169	169	6 bars	42	84	179	250	220	787	1400	442	69	3,7		
		5 bars	40	79	146	201	177	604	1200					
		4 bars	37	74	112	154	136	434	1000					
NTZ 10 RV 202	202	6 bars	35	70	215	300	264	787	1400	442	69	3,7		
		5 bars	33	66	175	241	212	604	1200					
		4 bars	31	61	135	185	163	434	1000					

Data indicated in this table have an accuracy of +/- 5%

POWER, SPEED, TORQUE AND AIR CONSUMPTION GRAPHS



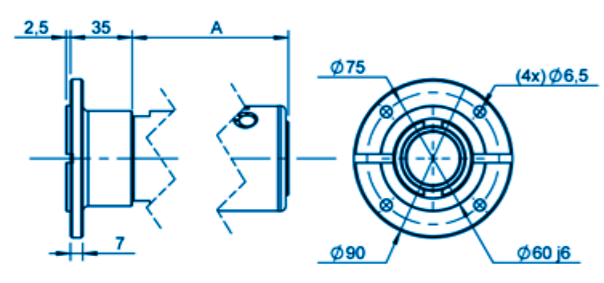
MAXIMUM RADIAL & AXIAL LOAD



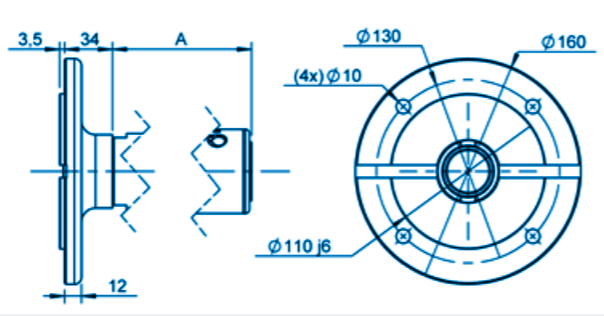
NOTES

FLANGES **GROUP IV** (1/3) XTH 05 XTH 07 XTS 08 XTH 08 XTS 10 XTH 10 XTS 20 XTS 25

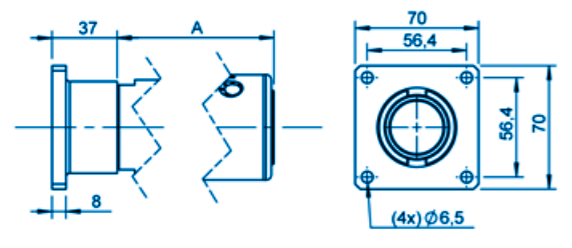
GROUP IV FLANGE AB - IEC63B14



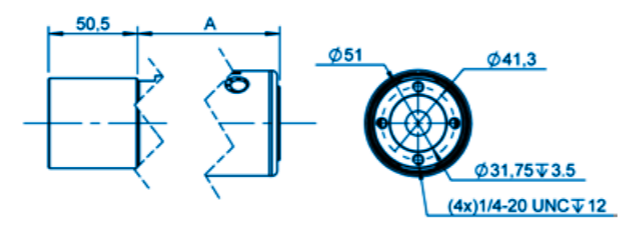
GROUP IV FLANGE AC - IEC71B5



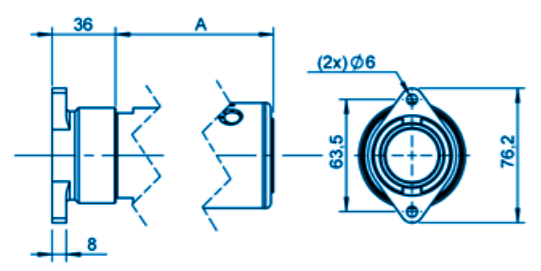
GROUP IV FLANGE AF



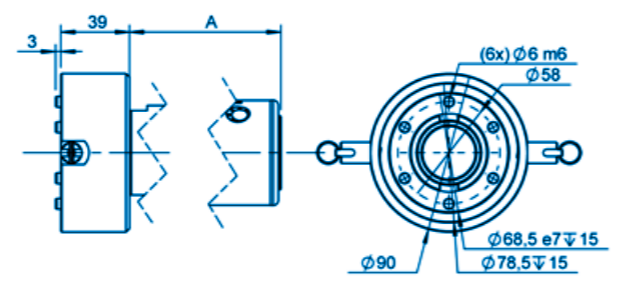
GROUP IV FLANGE AH



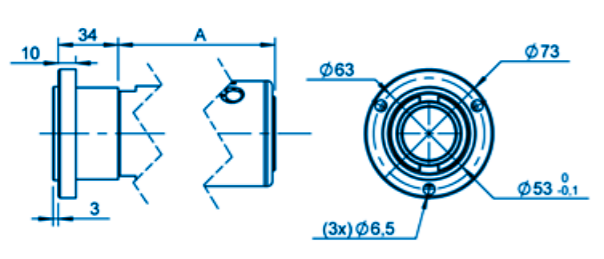
GROUP IV FLANGE AS



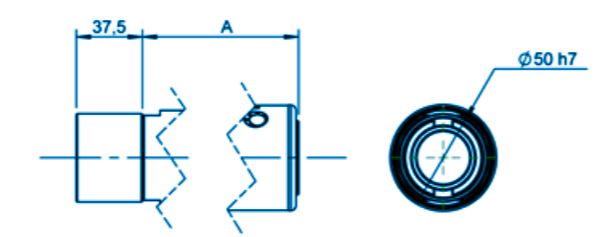
GROUP IV FLANGE AX - ARP



GROUP IV FLANGE B

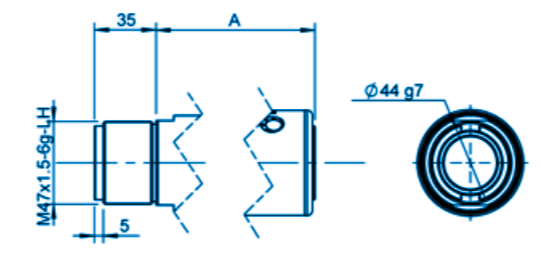


GROUP IV FLANGE B0

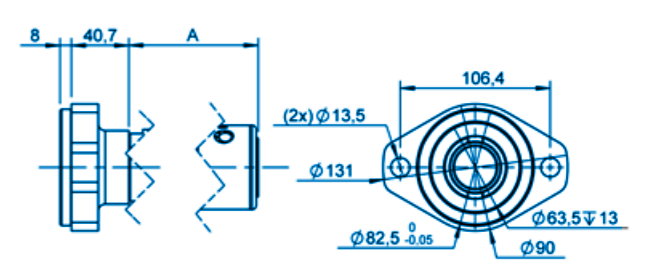


FLANGES **GROUP IV** (2/3) XTH 05 XTH 07 XTS 08 XTH 08 XTS 10 XTH 10 XTS 20 XTS 25

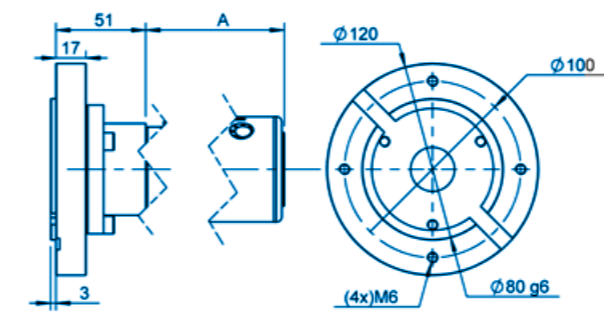
GROUP IV FLANGE F



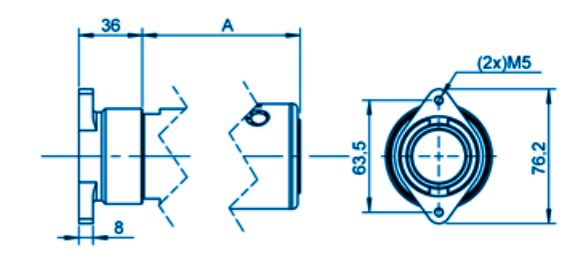
GROUP IV FLANGE FH



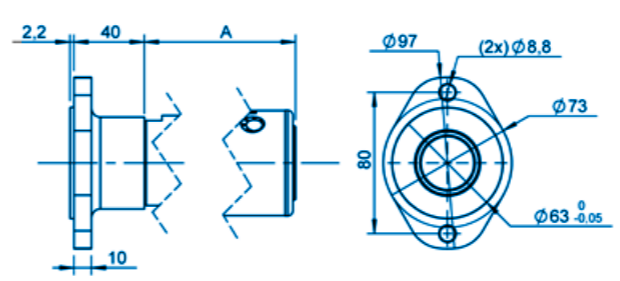
GROUP IV FLANGE FJ - IEC80B14



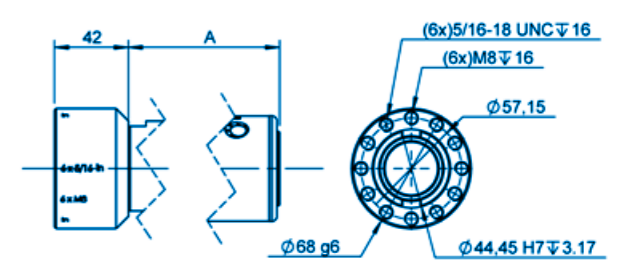
GROUP IV FLANGE J



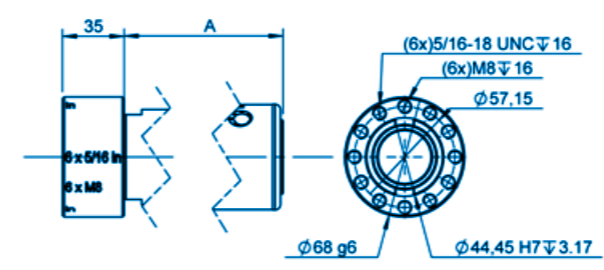
GROUP IV FLANGE L



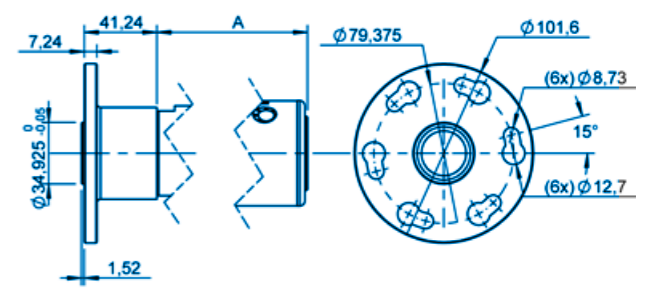
GROUP IV FLANGE M



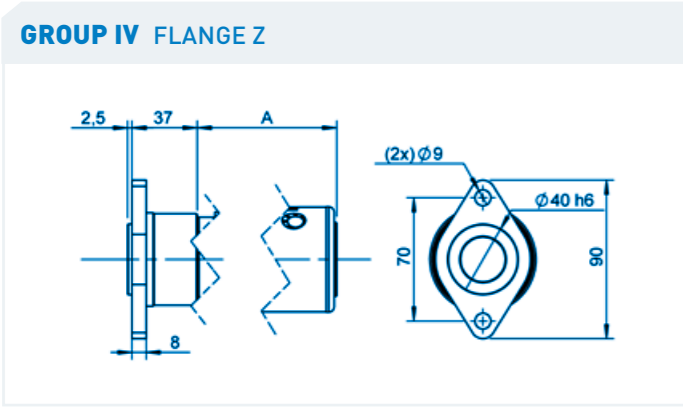
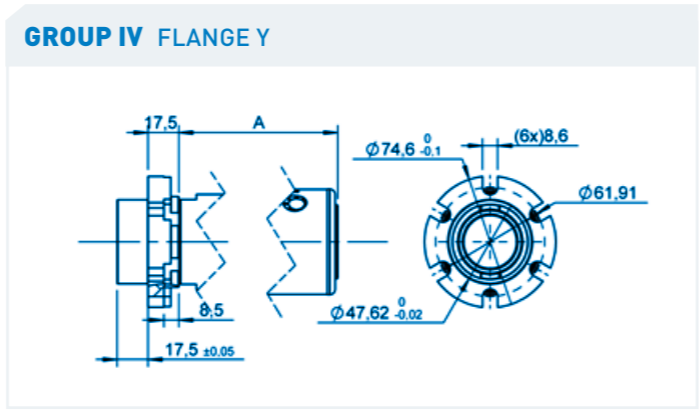
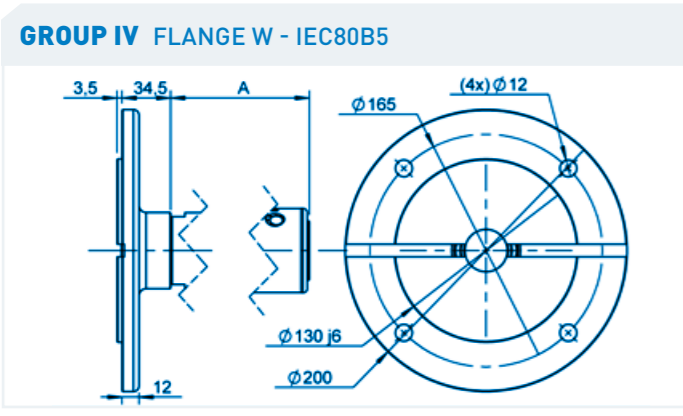
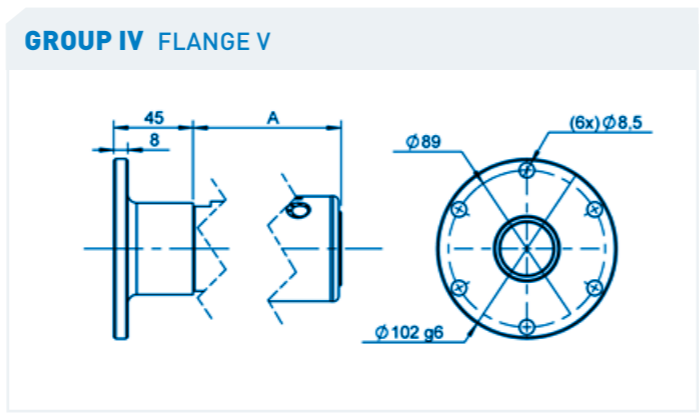
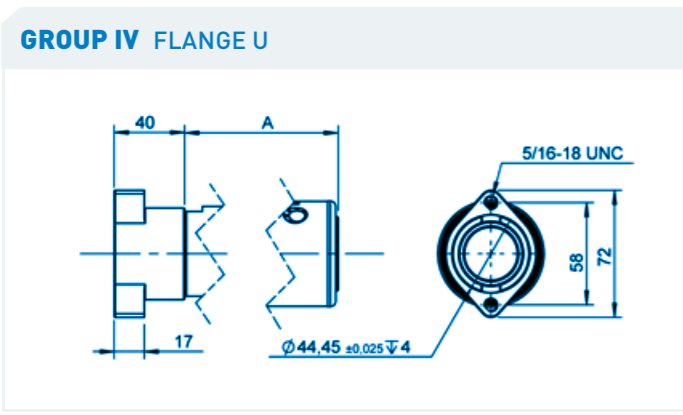
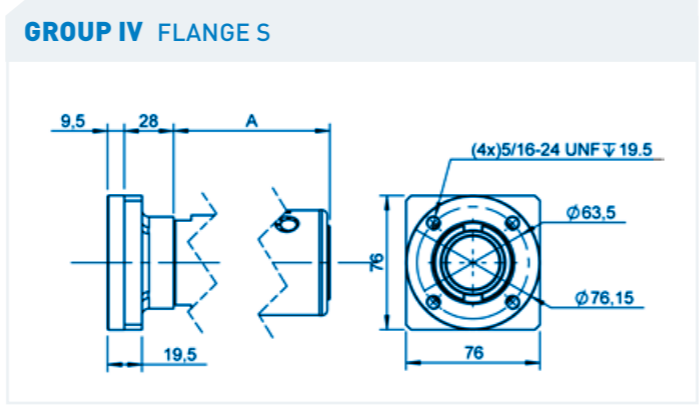
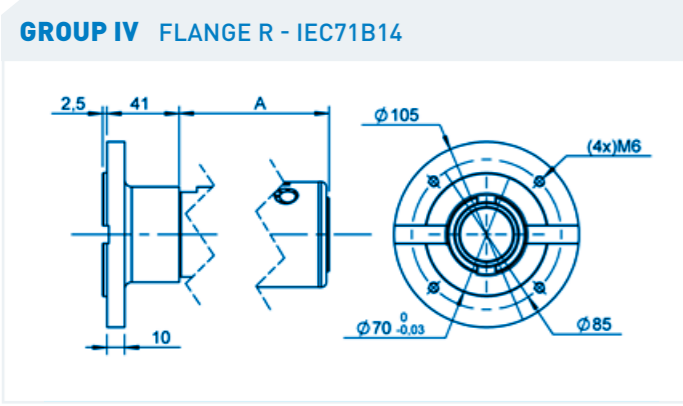
GROUP IV FLANGE N



GROUP IV FLANGE Q

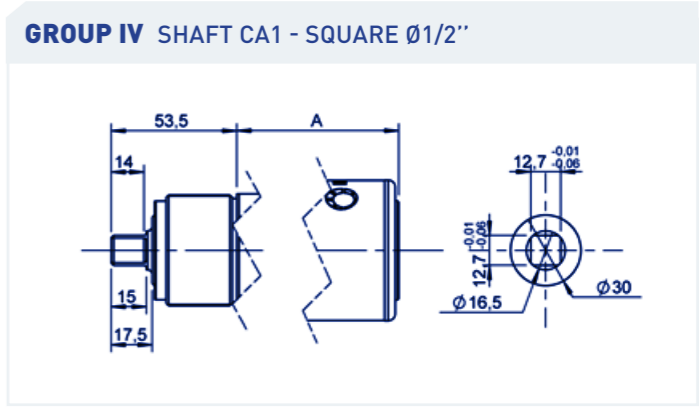
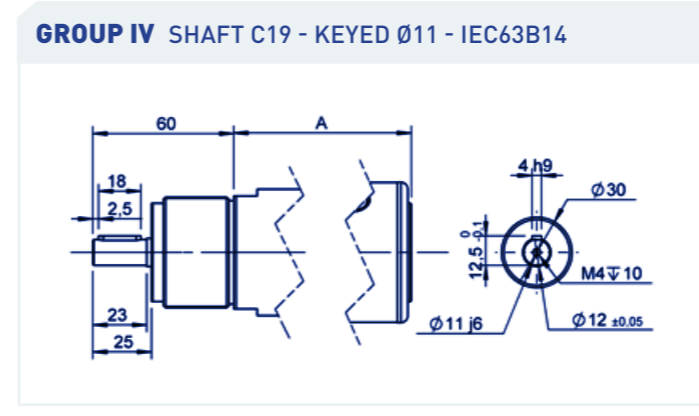
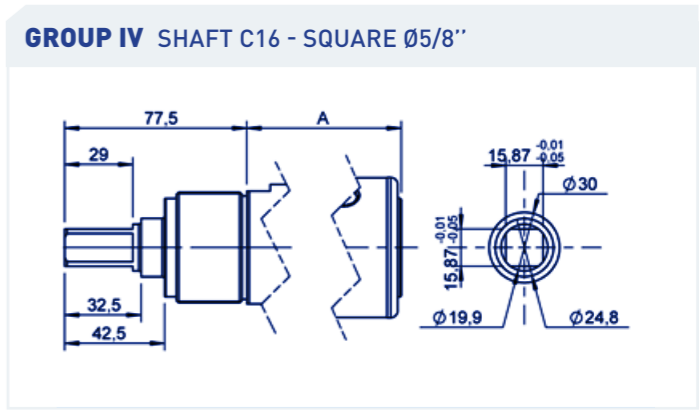
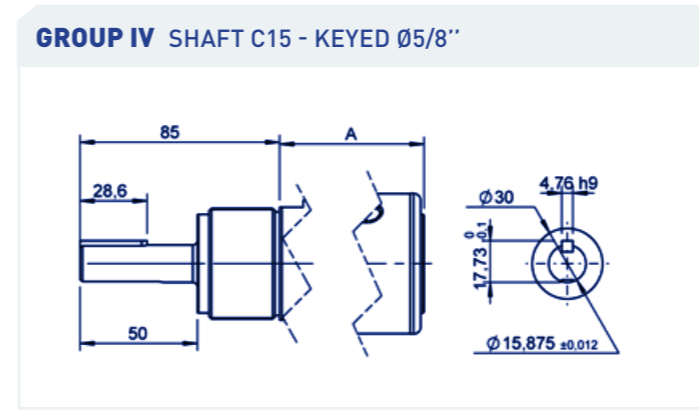
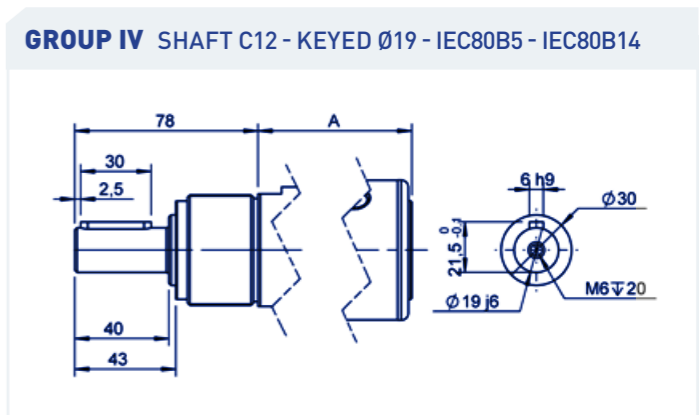
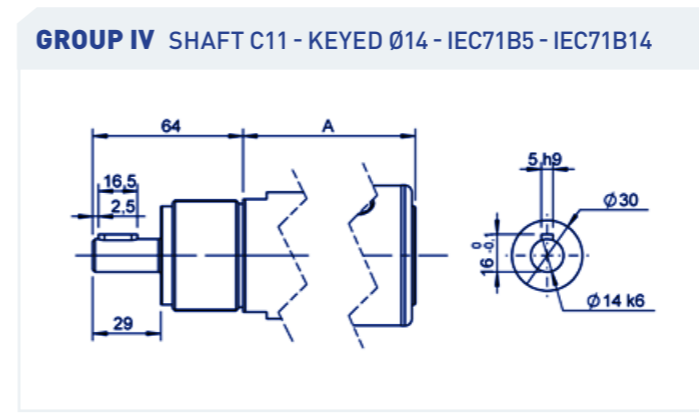
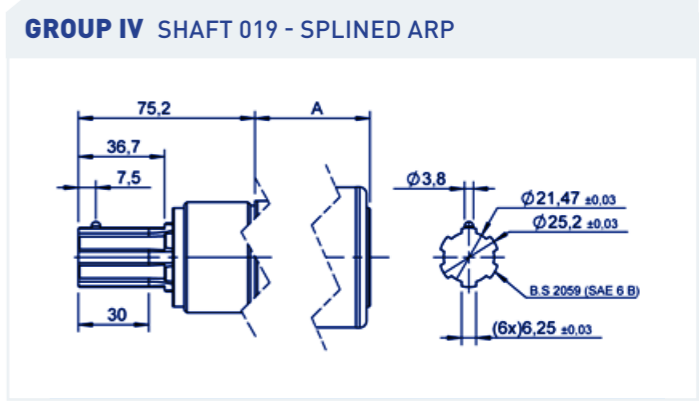
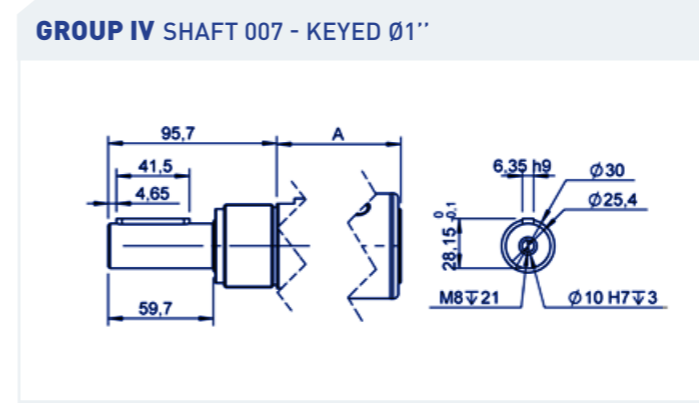


FLANGES **GROUP IV** (3/3) XTH 05 XTH 07 XTS 08 XTH 08 XTS 10 XTH 10 XTS 20 XTS 25



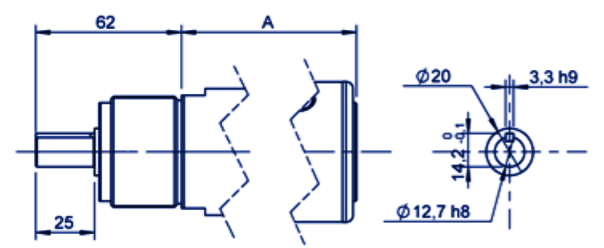
You didn't find your match ?
Contact us !

SHAFTS **GROUP IV** (1/3) XTH 05 XTH 07 XTS 08 XTH 08 XTS 10 XTH 10 XTS 20 XTS 25

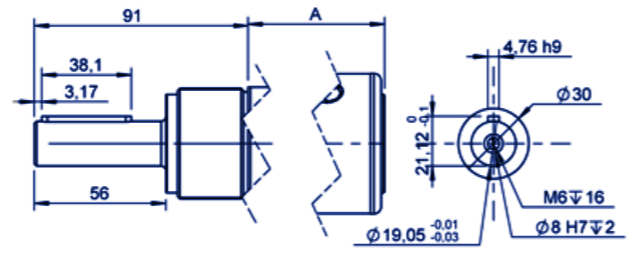


SHAFTS **GROUP IV** (2/3) XTH 05 XTH 07 XTS 08 XTH 08 XTS 10 XTH 10 XTS 20 XTS 25

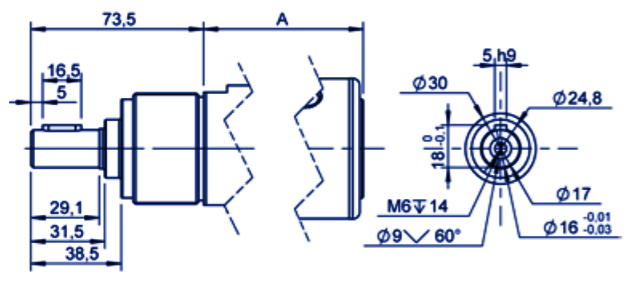
GROUP IV SHAFT CL1 - KEYED Ø1/2"



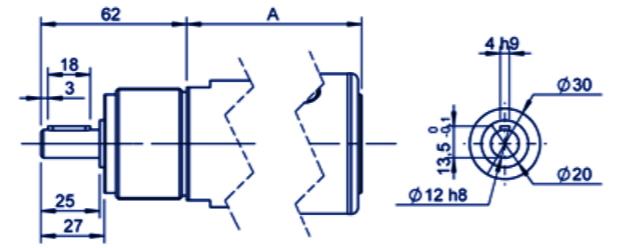
GROUP IV SHAFT CL2 - KEYED Ø3/4"



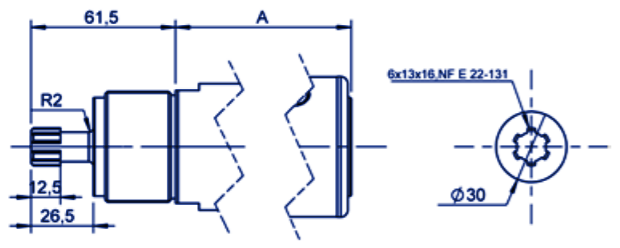
GROUP IV SHAFT CL6 - KEYED Ø16



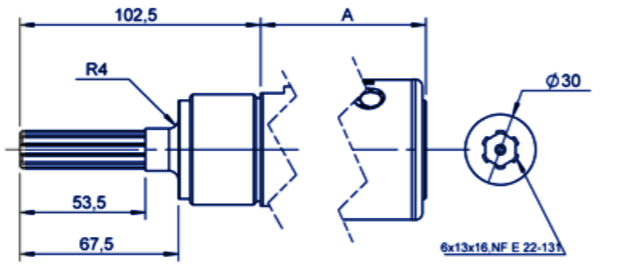
GROUP IV SHAFT CL9 - KEYED Ø12



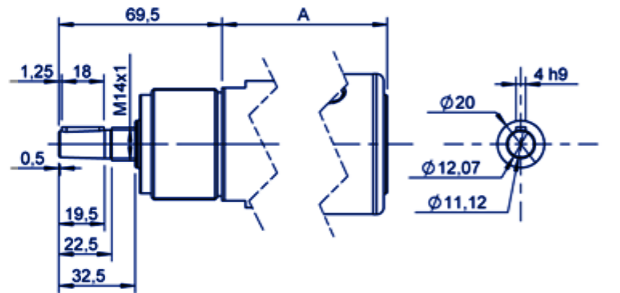
GROUP IV SHAFT CNC - SPLINED SHORT



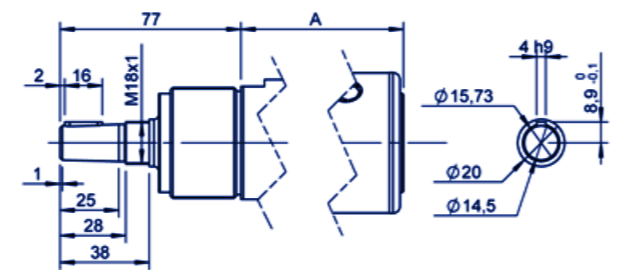
GROUP IV SHAFT CNL - SPLINED LONG



GROUP IV SHAFT CONICAL B12

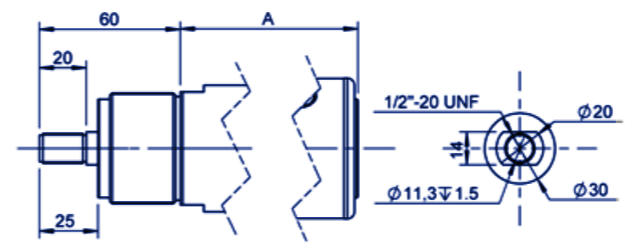


GROUP IV SHAFT CONICAL B16



SHAFTS **GROUP IV** (3/3) XTH 05 XTH 07 XTS 08 XTH 08 XTS 10 XTH 10 XTS 20 XTS 25

GROUP IV SHAFT FI1 - THREADED Ø1/2"



You didn't find your match ?
Contact us !