

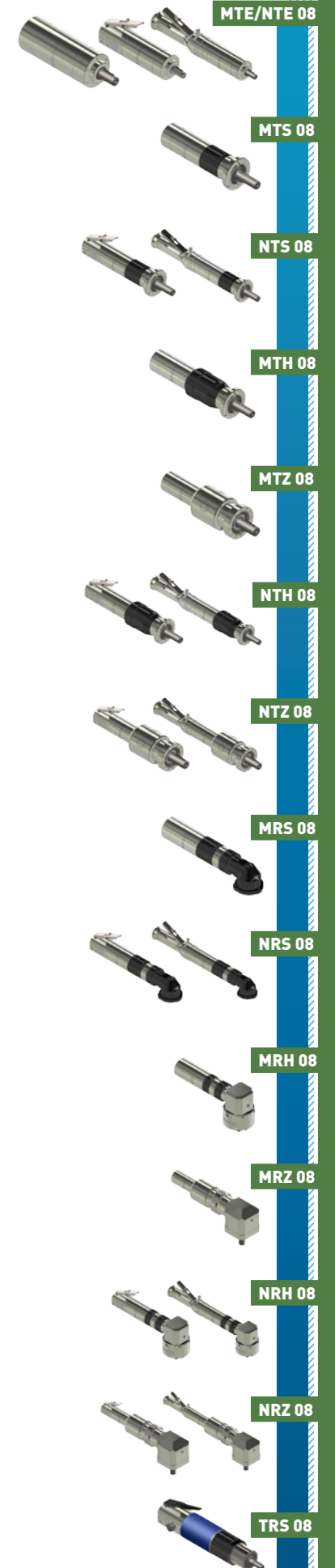


MAX POWER
710 W
MAX TORQUE
730 Nm

"08" series air motors exist in many versions, straight shaft or right angle drive, with or without integrated control handle, and with many different flanges and output shafts available as standard.

That air motor is also available with 4 types of integrated gearboxes, enabling it to adapt to many different applications, whether high speed is required (Easy duty), good balance between speed and torque (Standard duty) or high torque and robustness is mandatory (Heavy duty and Super Heavy duty).

With a maximum power of 700 W, it is one of the most versatile air motors in the range.



+ ACCESSORIES FOR THIS MOTOR	Reference
Filtration, pressure Regulation and Lubrication unit (FRL)	AC107
Safety Air Treatment Box (SAT Box)	AC118
With Pedal remote control	AC119
With handle remote control	AC120
With remote emergency kill switch	AC125
With remote E-Stop and pedal remote control	AC121
With remote E-Stop and handle remote control	AC122
Maintenance kits	
Maintenance kit for "08" series	AC302
Maintenance kit for lube free "08" series	AC312
Maintenance kit for kit start "08" series	AC322
Control handles	
Safety control handle for non reversible motor	AC415
Safety control handle for reversible motor	AC416
Progressive control handle for non reversible motor	AC417
Progressive control handle for reversible motor	AC418
modec Oil Co-16	AC149
Filters and silencers	
Metallic standard exhaust silencer	AC181
Metallic standard inlet silencer	AC180
Plastic standard exhaust silencer	AC183
Plastic standard inlet silencer	AC150
Heavy duty exhaust silencer	AC155
Heavy duty inlet silencer	AC154
Speed control muffler	AC172
High flow air muffler	AC158
Exhaust silencer filter	AC165

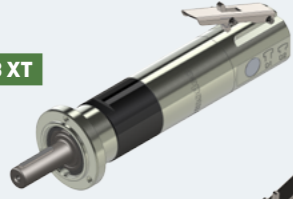
CONNECTION AND LUBRICATION					
🔧	Min. fittings Ø		Min. pipe Ø		Lubrication (6,2 bars)
	In	Out	In	Out	
	7 mm / 0,3 In	10 mm / 0,4 In	9 mm / 0,4 In	13 mm / 0,5 In	4 drops / minute

CONVERSION TABLE		
Watt ▶ Horse power	Newton meter ▶ Pound feet	Millimeter ▶ Inch
Watt x 0,001341 = hp	Nm x 0,7376 = lb.ft	mm x 0,03937 = in
Bar ▶ Pound per square Inch	Normo Liter / minute ▶ Standard cubic feet per minute	Kilogram ▶ Pound
Bar x 14,5 = psi	NL / min x 0,03531 = scfm	Kg x 2,205 = lb

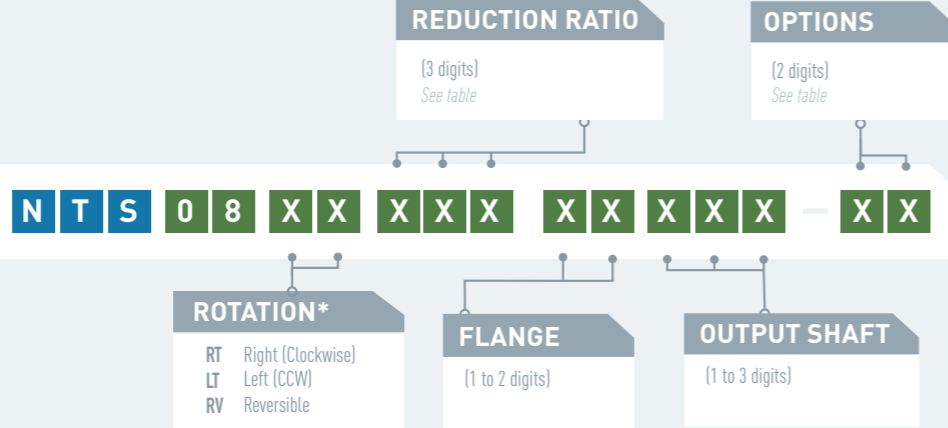
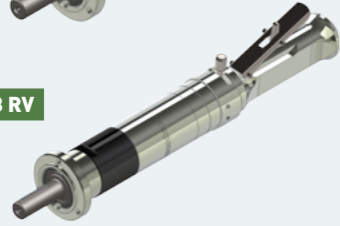
MOTOR NTS 08

POWER 460-480 W

NTS 08 XT



NTS 08 RV



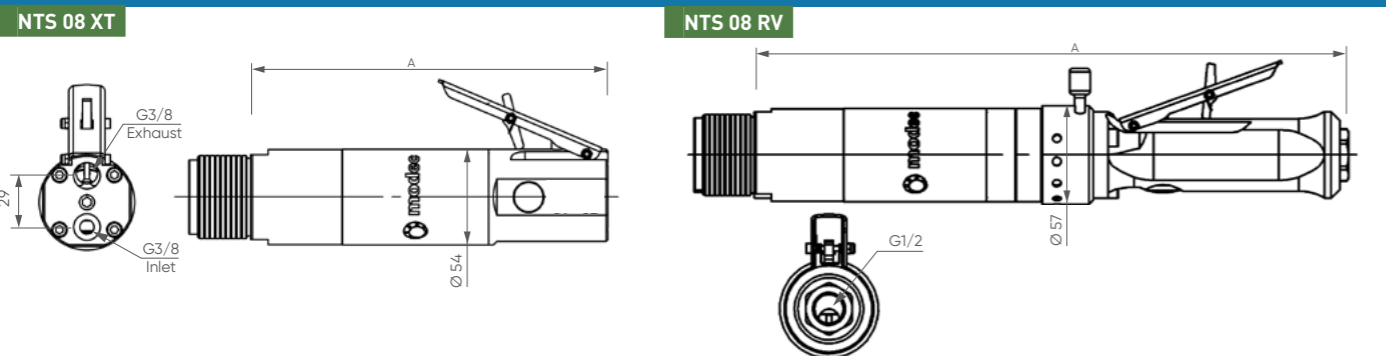
* rotation direction is defined when looking from the back of the motor

PERFORMANCES

Air motor reference	Reduction ratio	Air supply pressure	Speed (rpm)		Torque (N.m)			Max Power (W)	Air cons (Nl/min)	Dimensions		
			@ max Power	Free	@ max Power	Max (stall)	Starting torque			A (mm)	Ø (mm)	Weight (kg)
NTS 08 XT 005	5	6,2 bars	1670	3340	2,8	5,2	4,6	481	900	176	54	2
		5 bars	1501	3002	2,3	4,2	3,7	362	750			
		4 bars	1368	2735	1,9	3,3	2,9	272	600			

Data indicated in this table have an accuracy of +/- 5%

LAYOUT



PERFORMANCES

Air motor reference	Reduction ratio	Air supply pressure	Speed (rpm)		Torque (N.m)			Max Power (W)	Air cons (Nl/min)	Dimensions		
			@ max Power	Free	@ max Power	Max (stall)	Starting torque			A (mm)	Ø (mm)	Weight (kg)
NTS 08 RV 005	5	6,2 bars	1584	3167	2,8	4,4	3,9	462	950	317	57	2,4

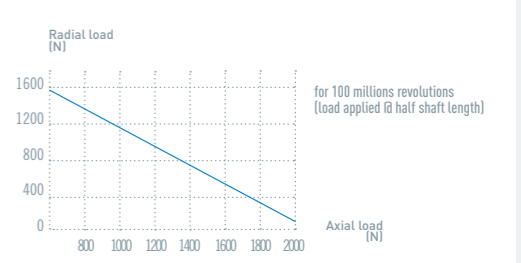
Data indicated in this table have an accuracy of +/- 5%

OPTIONS AVAILABLE FOR THE NTS 08 XT

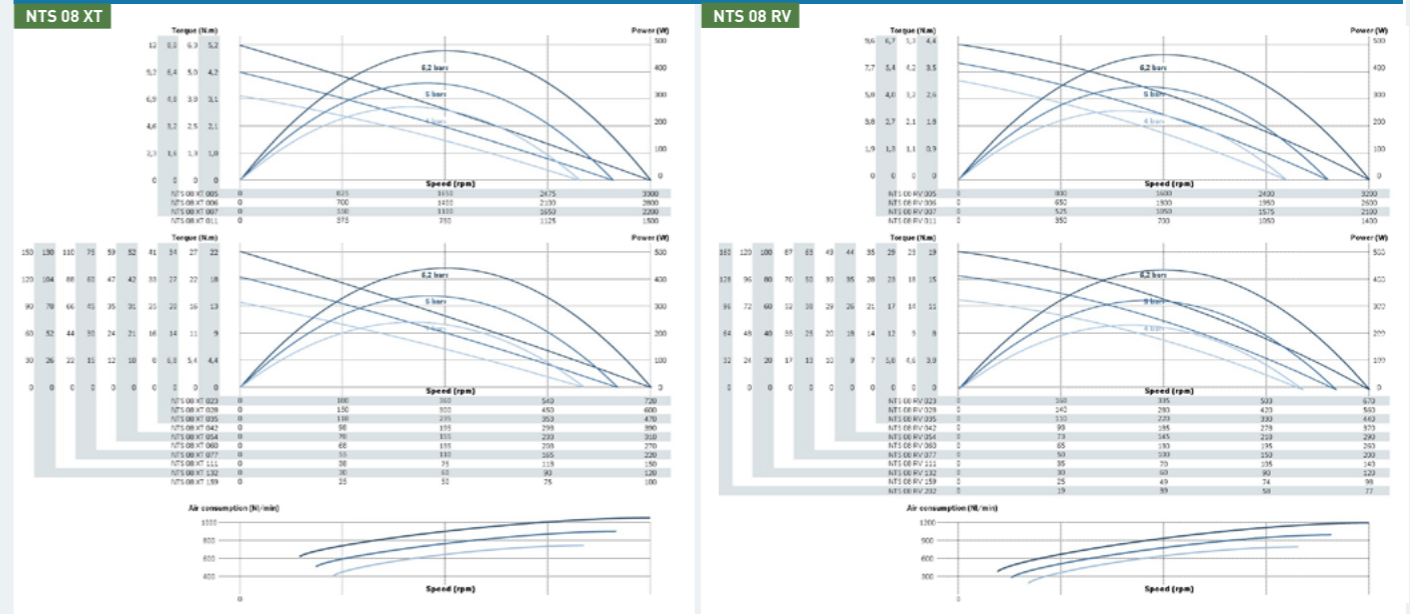
OPTIONS AVAILABLE FOR THE NTS 08 RV

Collected exhaust	01	07	09	10	21	22	ATEX certification	03	12	16	17	29	30
ATEX certification							Left/Right switch						
Stainless steel							Stainless steel						
Kit start							Kit start						
Code	01	07	09	10	21	22	Code	03	12	16	17	29	30

MAXIMUM RADIAL & AXIAL LOAD

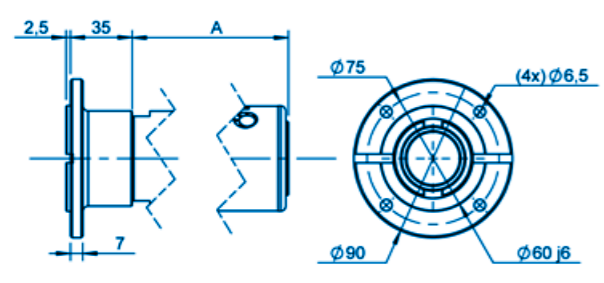


POWER, SPEED, TORQUE AND AIR CONSUMPTION GRAPHS

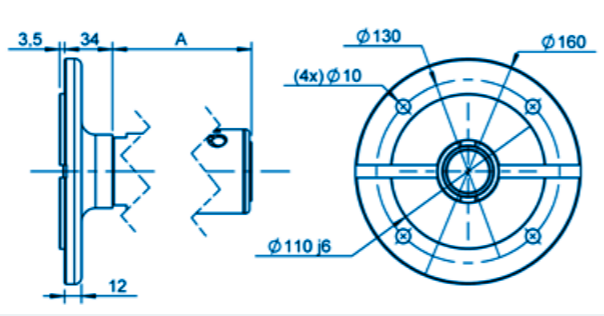


FLANGES **GROUP IV** (1/3) XTH 05 XTH 07 XTS 08 XTH 08 XTS 10 XTH 10 XTS 20 XTS 25

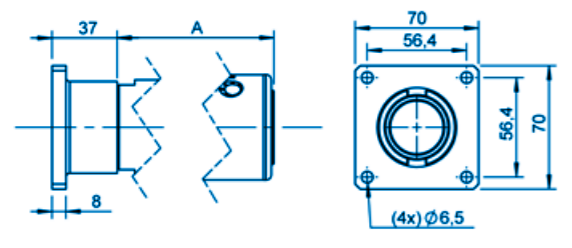
GROUP IV FLANGE AB - IEC63B14



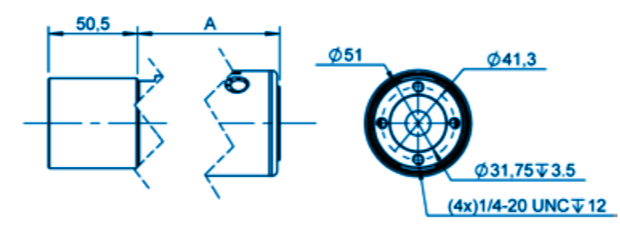
GROUP IV FLANGE AC - IEC71B5



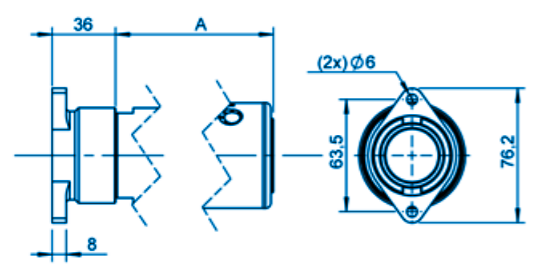
GROUP IV FLANGE AF



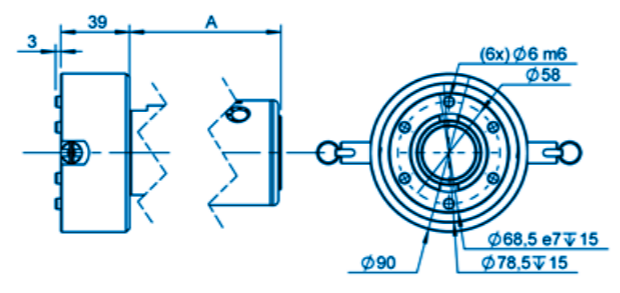
GROUP IV FLANGE AH



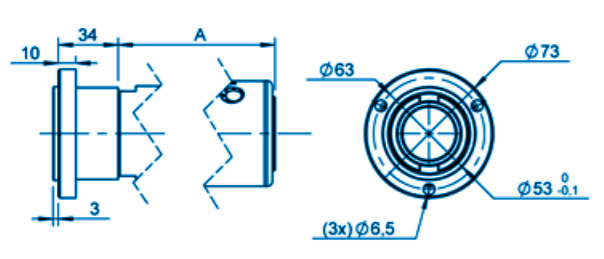
GROUP IV FLANGE AS



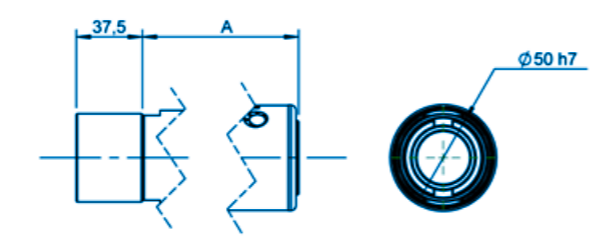
GROUP IV FLANGE AX - ARP



GROUP IV FLANGE B

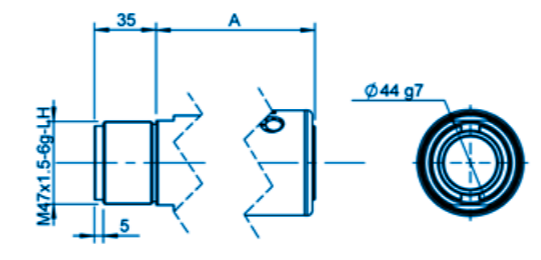


GROUP IV FLANGE B0

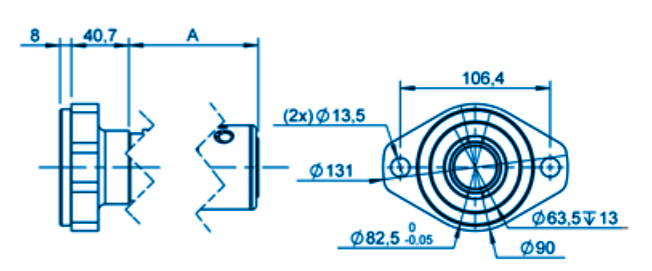


FLANGES **GROUP IV** (2/3) XTH 05 XTH 07 XTS 08 XTH 08 XTS 10 XTH 10 XTS 20 XTS 25

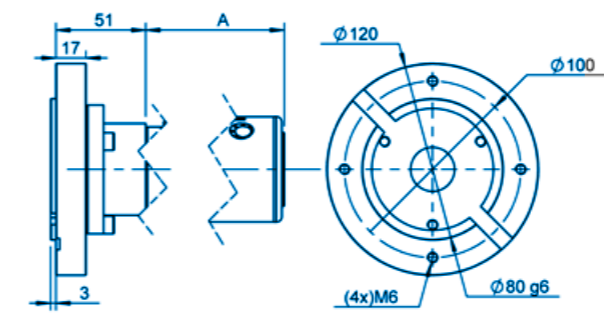
GROUP IV FLANGE F



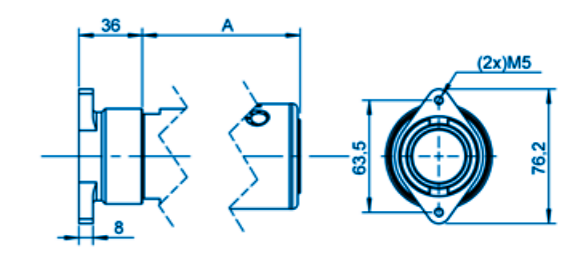
GROUP IV FLANGE FH



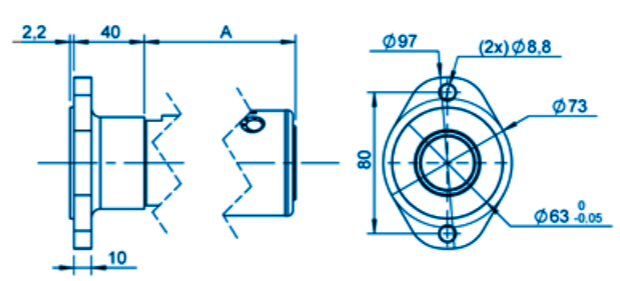
GROUP IV FLANGE FJ - IEC80B14



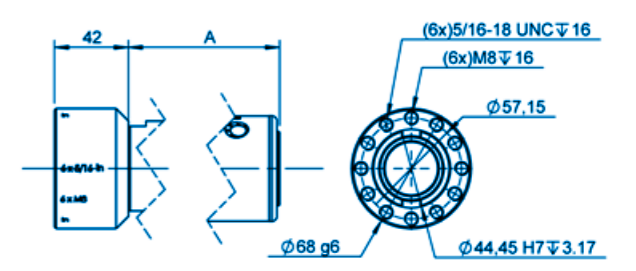
GROUP IV FLANGE J



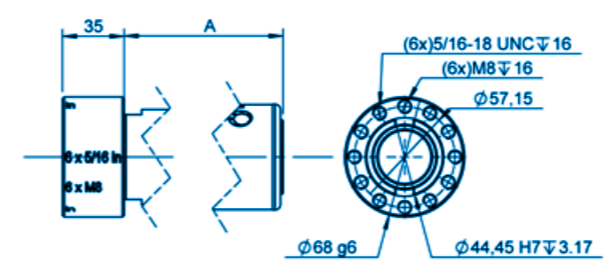
GROUP IV FLANGE L



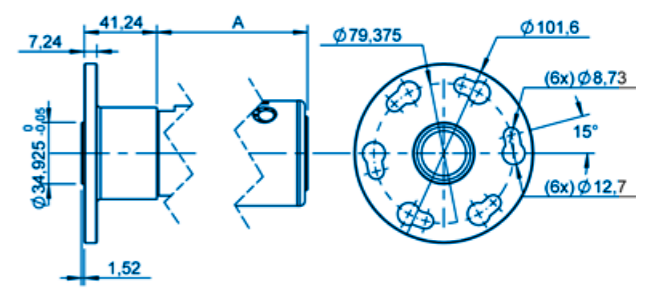
GROUP IV FLANGE M



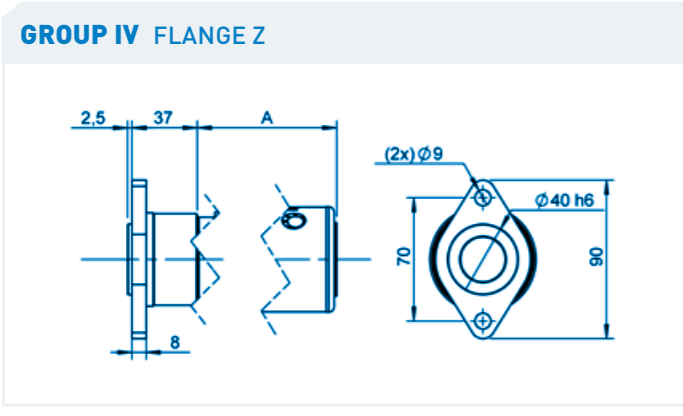
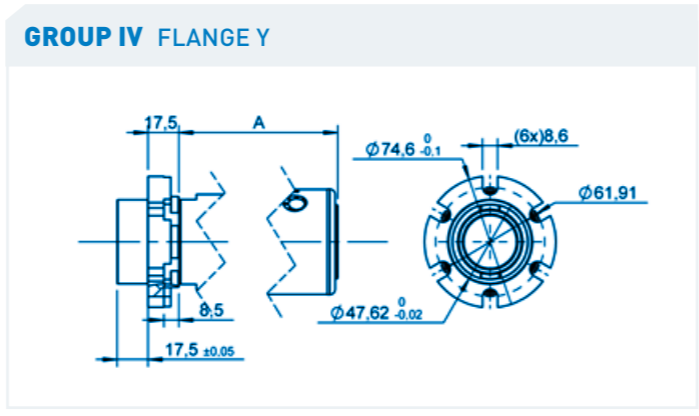
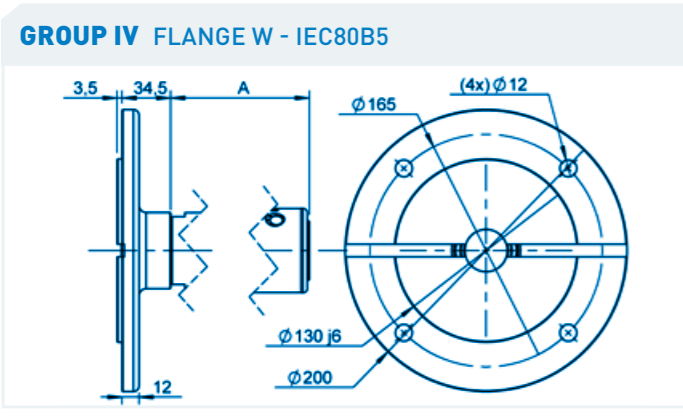
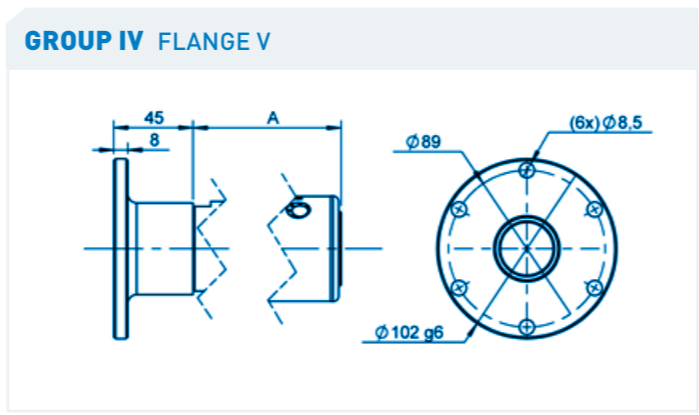
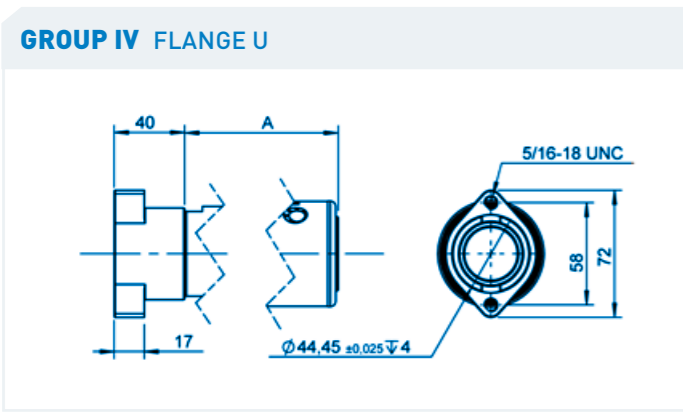
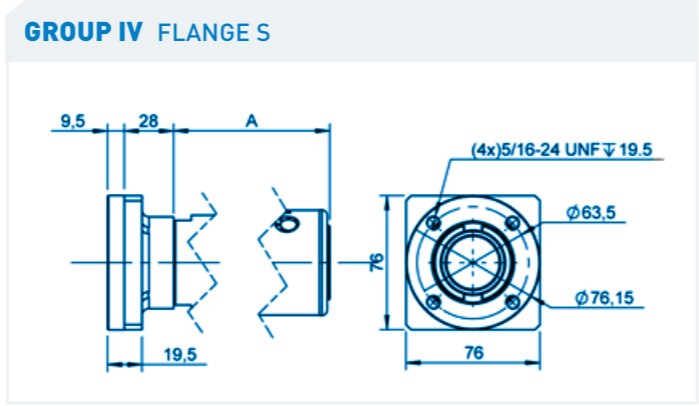
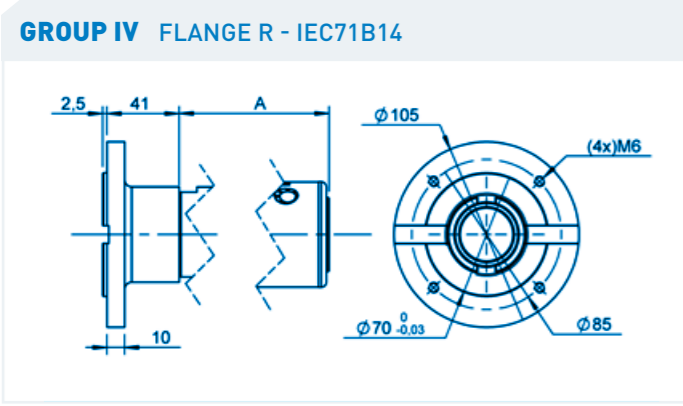
GROUP IV FLANGE N



GROUP IV FLANGE Q

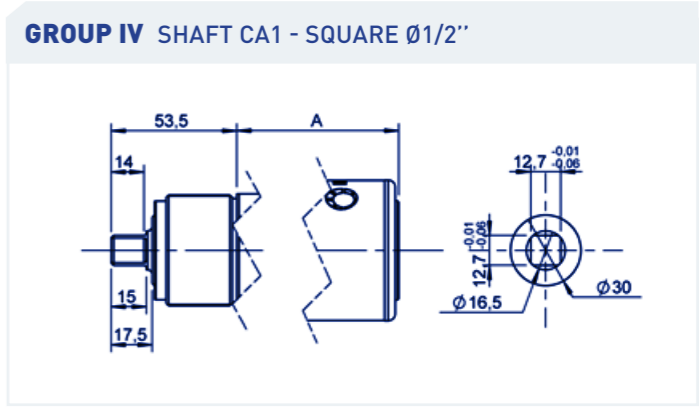
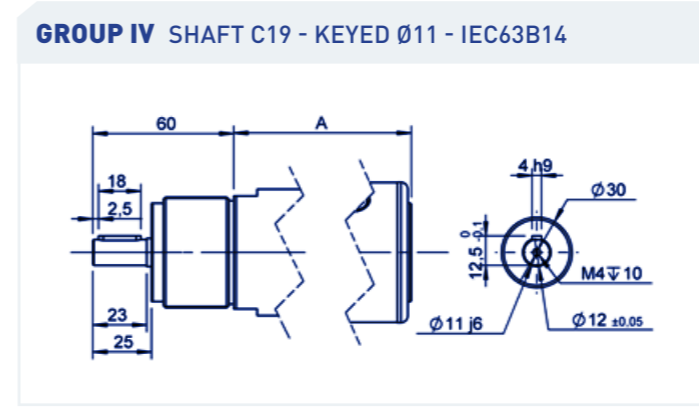
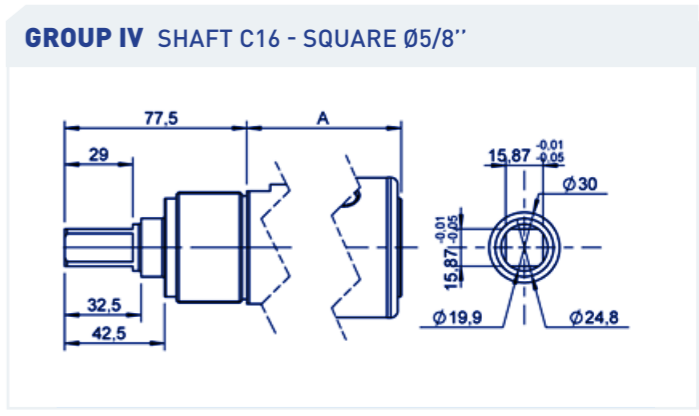
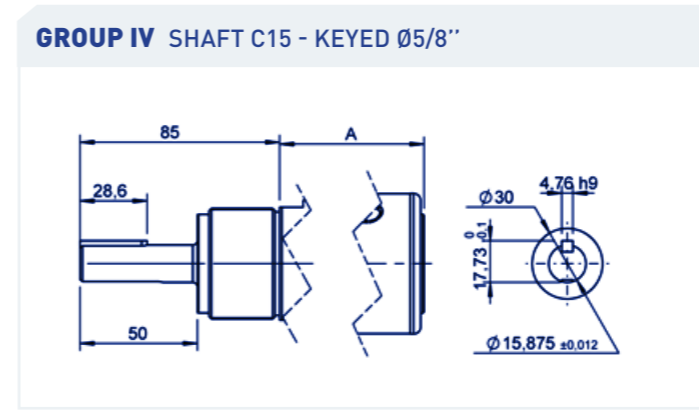
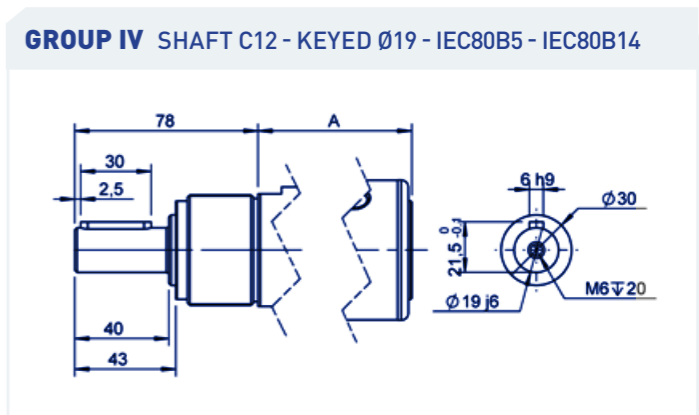
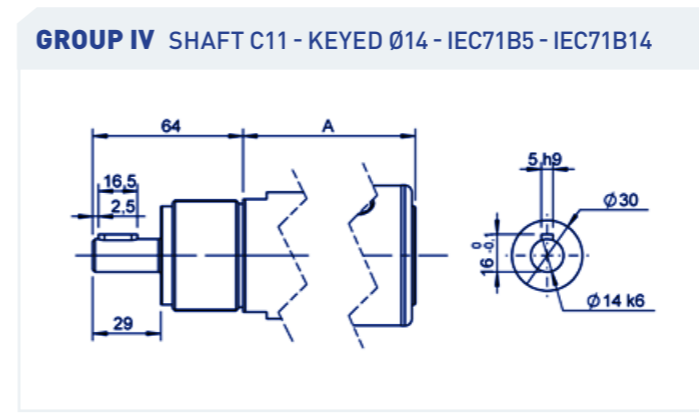
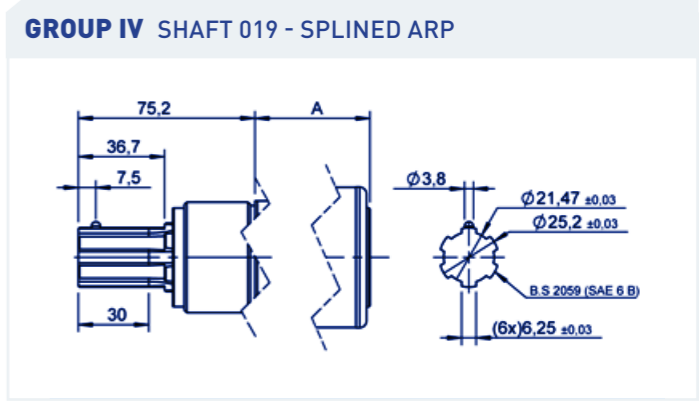
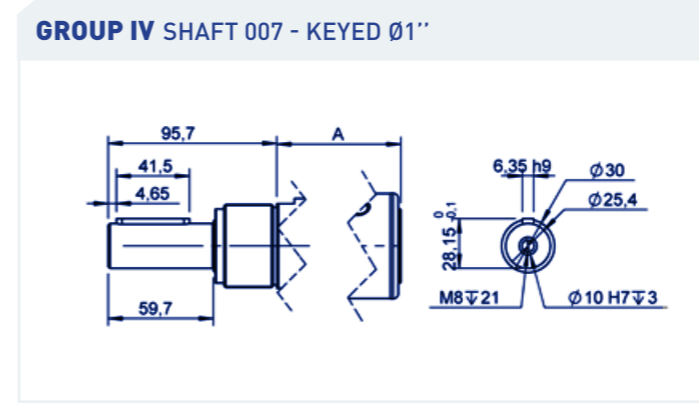


FLANGES **GROUP IV** (3/3) XTH 05 XTH 07 XTS 08 XTH 08 XTS 10 XTH 10 XTS 20 XTS 25

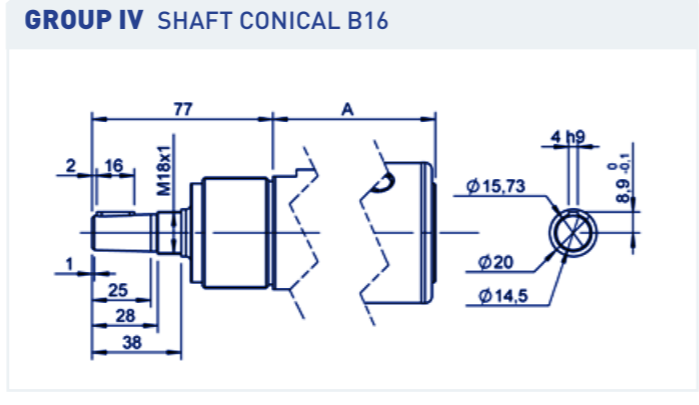
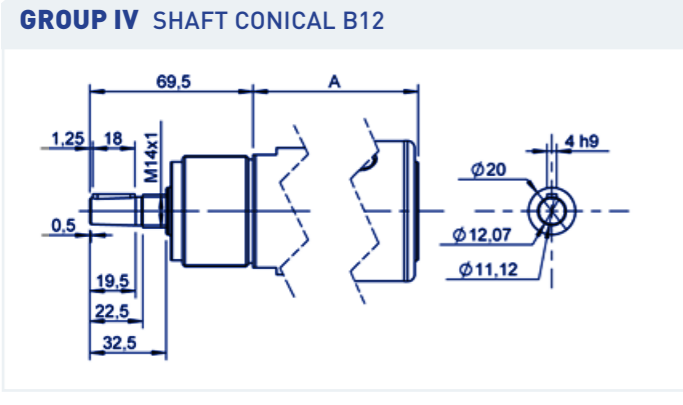
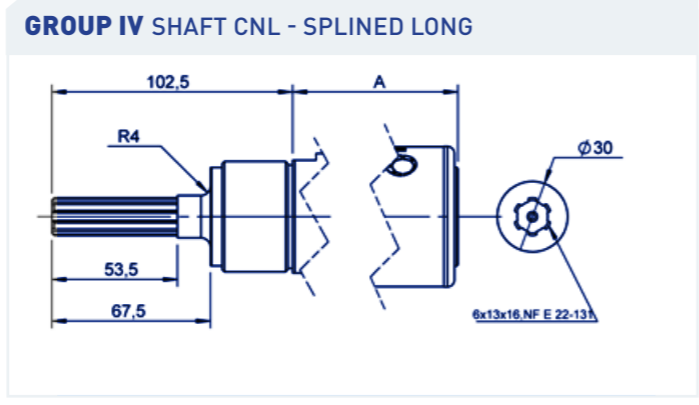
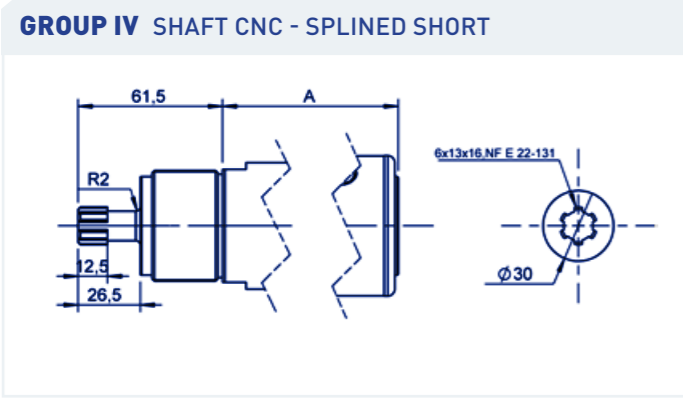
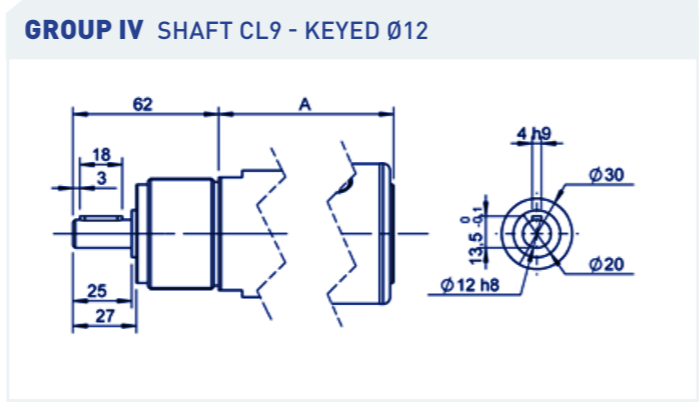
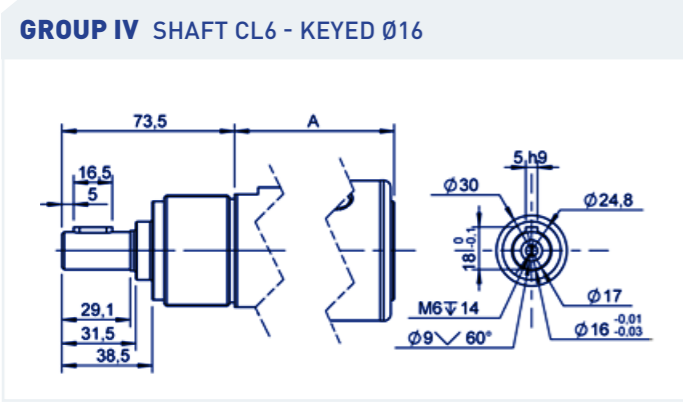
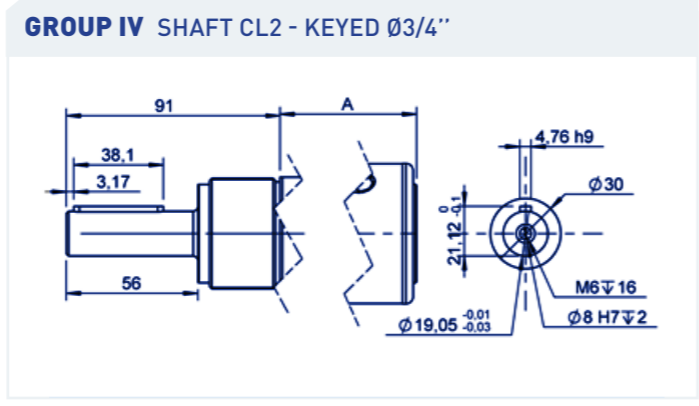
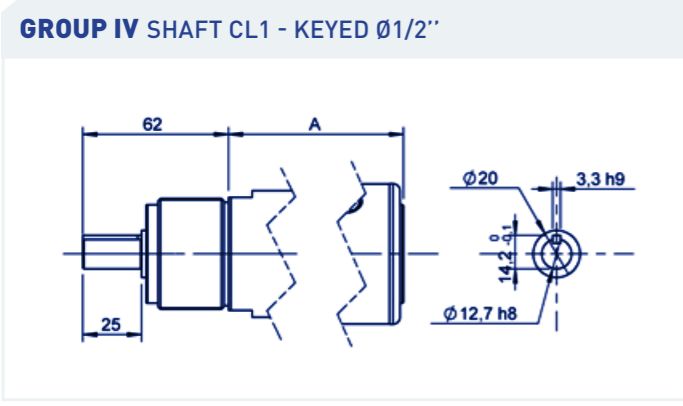


You didn't find your match ?
Contact us !

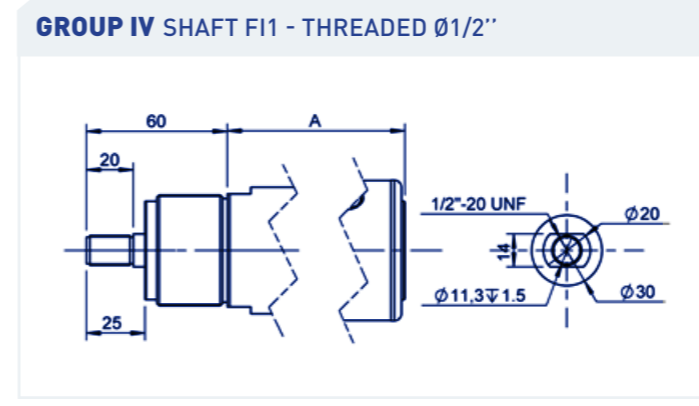
SHAFTS **GROUP IV** (1/3) XTH 05 XTH 07 XTS 08 XTH 08 XTS 10 XTH 10 XTS 20 XTS 25



SHAFTS **GROUP IV** (2/3) XTH 05 XTH 07 XTS 08 XTH 08 XTS 10 XTH 10 XTS 20 XTS 25



SHAFTS **GROUP IV** (3/3) XTH 05 XTH 07 XTS 08 XTH 08 XTS 10 XTH 10 XTS 20 XTS 25



You didn't find your match ?
Contact us !