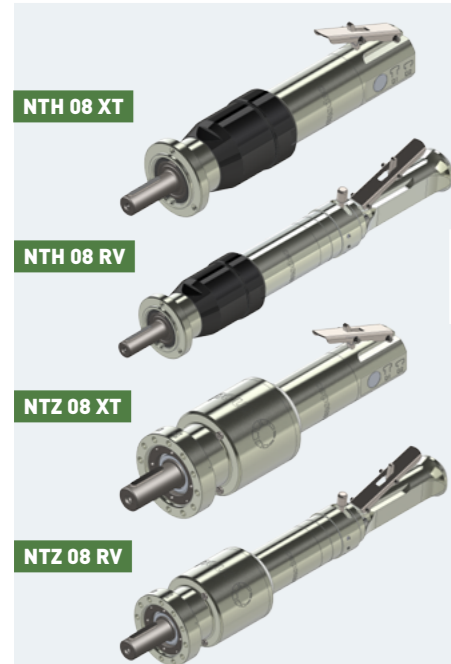


# MOTEUR NTH 08 / NTZ 08

PUISSANCE 420-430 W

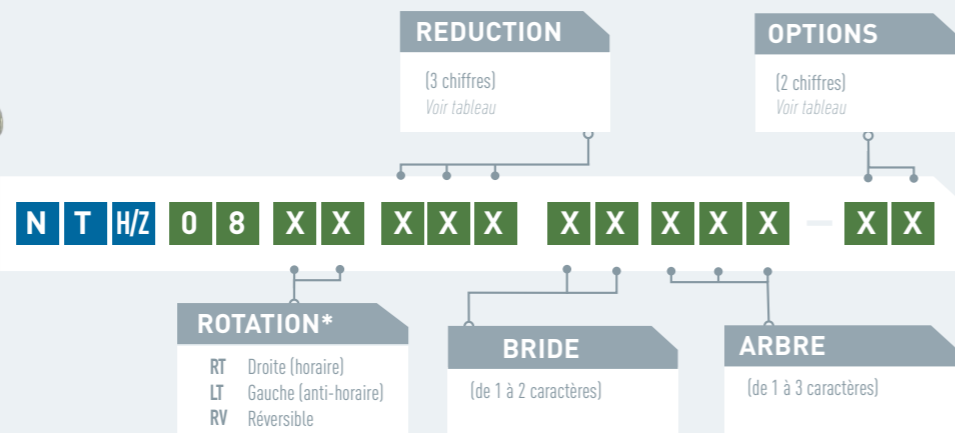


NTH 08 XT

NTH 08 RV

NTZ 08 XT

NTZ 08 RV



\* Le sens de rotation s'apprécie en regardant le moteur par l'arrière

PERFORMANCES	NTH/Z 08 XT										Dimensions		
	Référence moteur	Rapport de réduction	Pression	Vitesse (en tr/min)		Couple (en N.m)			Puissance maxi (W)	Conso Air (Nl/min)	A (mm)	Ø (mm)	Poids (kg)
				A Pmax	A vide	A Pmax	Maxi (calage)	Démarrage					
NTH 08 XT 190	190	6,2 bars	43	86	96	174	153	430	1000	277,3	69	3,6	
			39	79	80	140	123	331	850				
			36	71	64	108	95	239	650				
NTH 08 XT 224	224	6,2 bars	36	73	113	205	180	430	1000	277,3	69	3,6	
			33	67	94	165	145	331	850				
			30	60	75	127	112	239	650				
NTH 08 XT 258	258	6,2 bars	32	63	130	236	208	430	1000	277,3	69	3,6	
			29	58	109	189	167	331	850				
			26	53	87	147	129	239	650				
NTH 08 XT 309	309	6,2 bars	26	53	156	283	249	430	1000	277,3	69	3,6	
			24	49	130	227	200	331	850				
			22	44	104	176	154	239	650				
NTZ 08 XT 394	394	6,2 bars	21	41	199	360	317	430	1000	168,2	88,8	4,7	
			19	38	166	289	255	331	850				
			17	34	133	224	197	239	650				
NTZ 08 XT 564	564	6,2 bars	14	29	285	516	454	430	1000	168,2	88,8	4,7	
			13	27	237	414	365	331	850				
			12	24	190	320	282	239	650				

PERFORMANCES	NTH/Z 08 RV										Dimensions		
	Référence moteur	Rapport de réduction	Pression	Vitesse (en tr/min)		Couple (en N.m)			Puissance maxi (W)	Conso Air (Nl/min)	A (mm)	Ø (mm)	Poids (kg)
				A Pmax	A vide	A Pmax	Maxi (calage)	Démarrage					
NTH 08 RV 224	224	6,2 bars	35	70	115	180	159	420	950	420,3	69	3,8	
			32	63	96	146	129	317	750				
			29	58	78	115	101	236	600				
NTH 08 RV 258	258	6,2 bars	30	61	132	207	182	420	950	420,3	69	3,8	
			27	55	110	168	148	317	750				
			25	50	90	132	116	236	600				
NTH 08 RV 309	309	6,2 bars	25	51	159	248	219	420	950	420,3	69	3,8	
			23	46	132	202	177	317	750				
			21	42	108	158	139	236	600				
NTZ 08 RV 394	394	6,2 bars	20	40	202	317	279	420	950	311,2	88,8	4,9	
			18	36	168	257	226	317	750				
			16	33	137	202	178	236	600				
NTZ 08 RV 564	564	6,2 bars	14	28	290	454	399	420	950	311,2	88,8	4,9	
			13	25	241	368	324	317	750				
			11	23	196	289	255	236	600				

Les données ci-dessus doivent être considérées avec une marge d'erreur de +/- 5%

**OPTIONS DISPONIBLES POUR LE NTH/Z 08 XT**

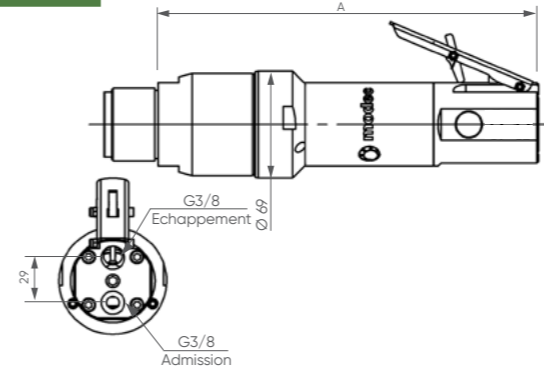
Echappement collecté	▶	▶	▶	▶	▶	▶
ATEX	▶					
Sans lubrification		▶		▶		
Kit start			▶			
Code	01	07	09	10	21	22

**OPTIONS DISPONIBLES POUR LE NTH/Z 08 RV**

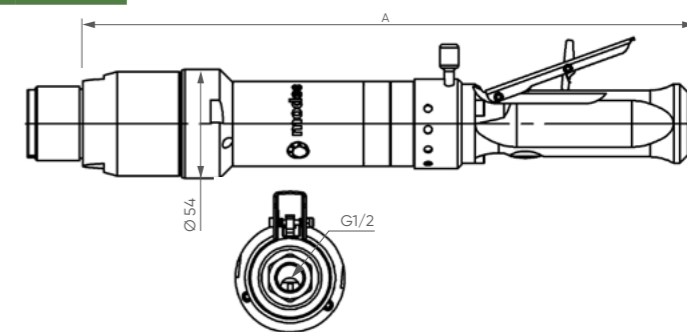
ATEX		▶				▶	▶
Inverseur G/D intégré		▶	▶	▶	▶	▶	▶
Sans lubrification				▶		▶	
Kit start					▶		
Code	03	12	16	17	29	30	

**ENCOMBREMENT**

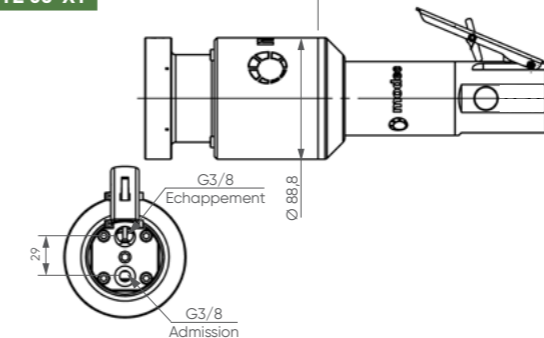
NTH 08 XT



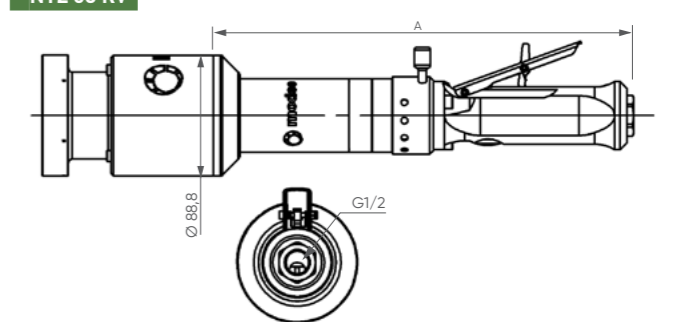
NTH 08 RV



NTZ 08 XT

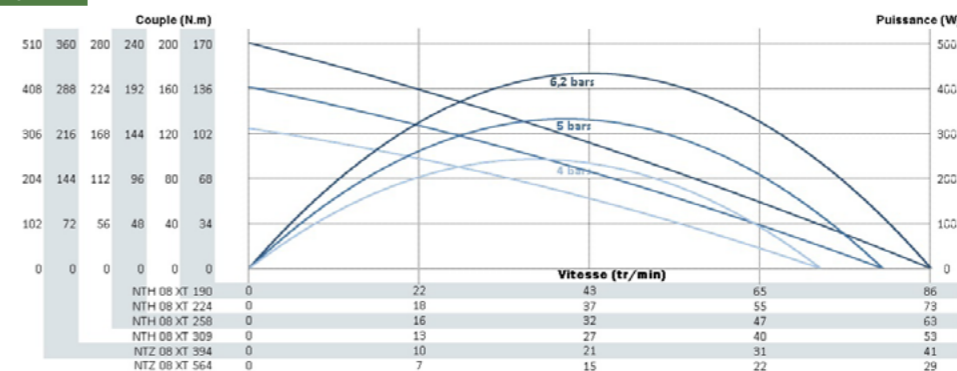


NTZ 08 RV

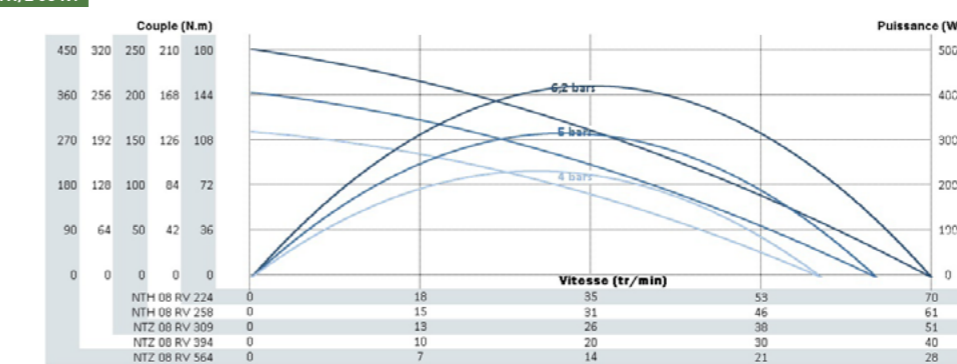


**COURBES DE PUISSANCE, VITESSE, COUPLE ET CONSOMMATION**

NTH/Z 08 XT

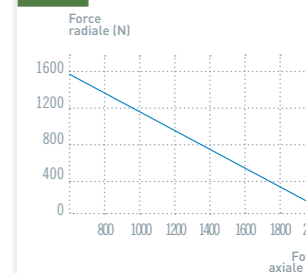


NTH/Z 08 RV

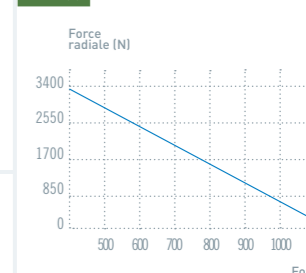


**CHARGE AXIALE ET RADIALE MAXI**

NTH 08



NTZ 08

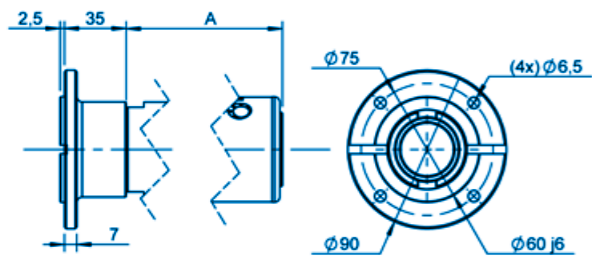


**NOTES**

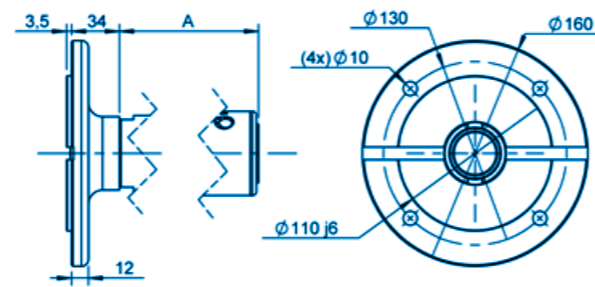
TYPE DE BRIDE **GRUPE IV** (1/3)

- XTH 05 XTH 07 XTS 08 XTH 08 XTS 10 XTH 10 XTS 20 XTS 25

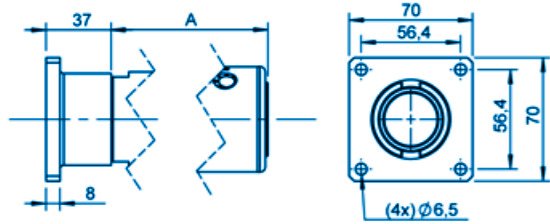
**GRUPE IV** BRIDE AB - IEC63B14



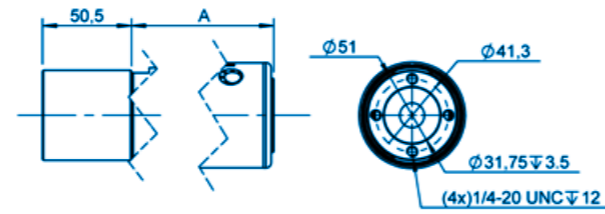
**GRUPE IV** BRIDE AC - IEC71B5



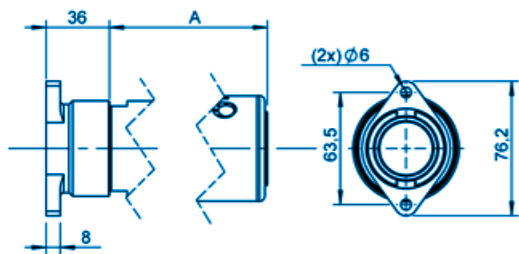
**GRUPE IV** BRIDE AF



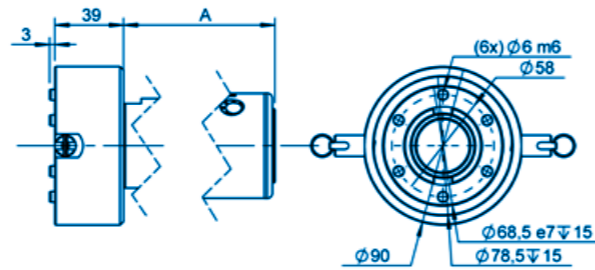
**GRUPE IV** BRIDE AH



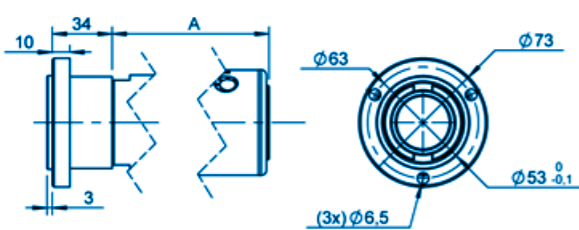
**GRUPE IV** BRIDE AS



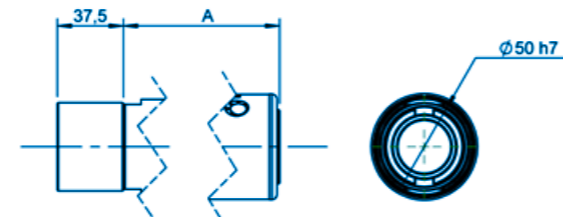
**GRUPE IV** BRIDE AX - ARP



**GRUPE IV** BRIDE B



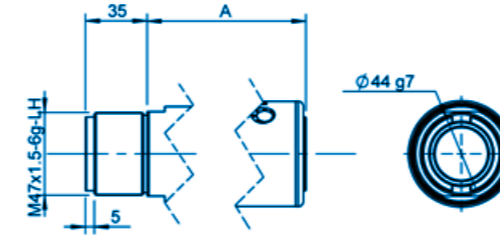
**GRUPE IV** BRIDE B0



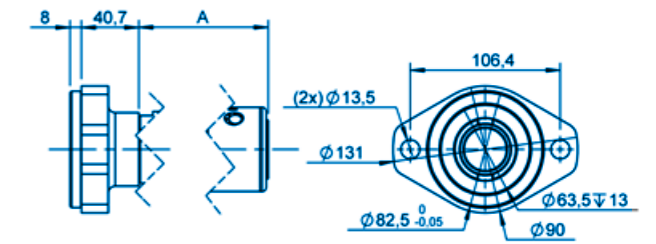
TYPE DE BRIDE **GRUPE IV** (2/3)

- XTH 05 XTH 07 XTS 08 XTH 08 XTS 10 XTH 10 XTS 20 XTS 25

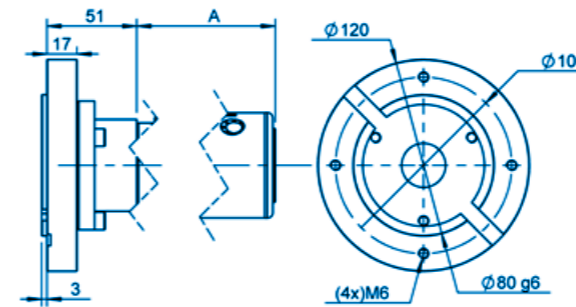
**GRUPE IV** BRIDE F



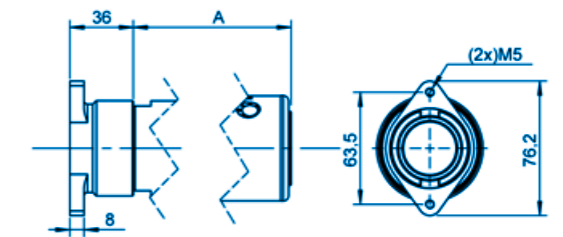
**GRUPE IV** BRIDE FH



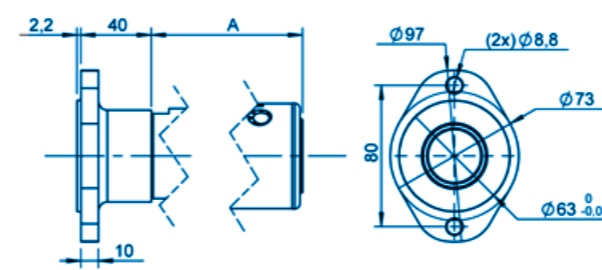
**GRUPE IV** BRIDE FJ - IEC80B14



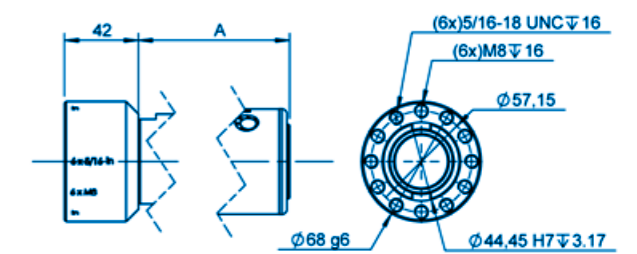
**GRUPE IV** BRIDE J



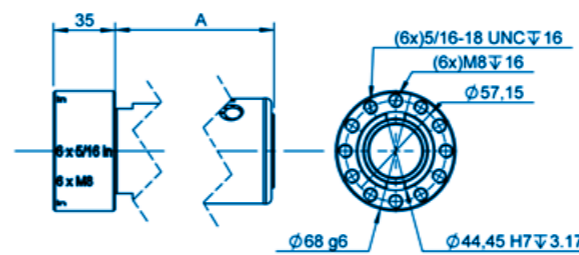
**GRUPE IV** BRIDE L



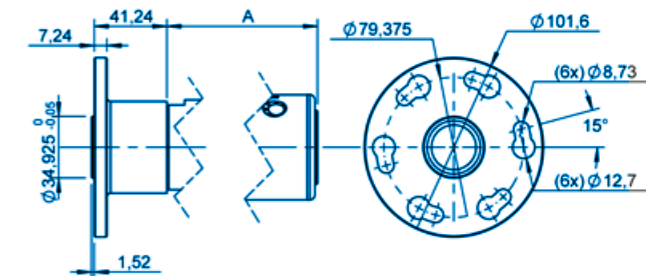
**GRUPE IV** BRIDE M



**GRUPE IV** BRIDE N

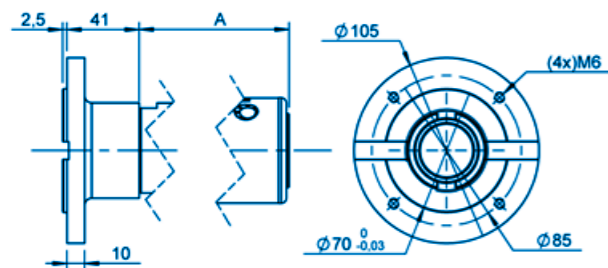


**GRUPE IV** BRIDE Q

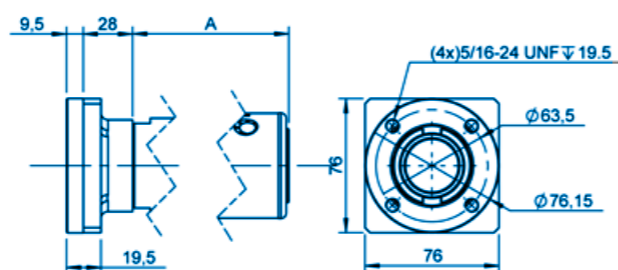


TYPE DE BRIDE **GRUPE IV** (3/3) XTH 05 XTH 07 XTS 08 XTH 08 XTS 10 XTH 10 XTS 20 XTS 25

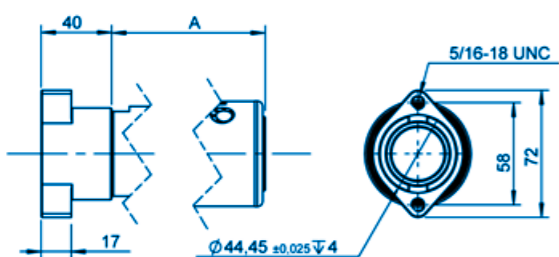
**GRUPE IV** BRIDE R - IEC71B14



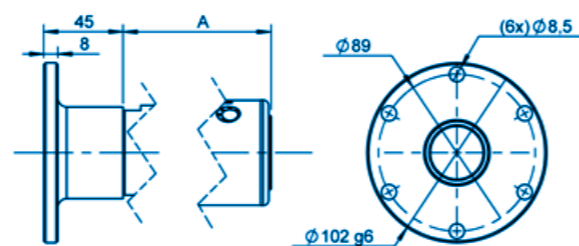
**GRUPE IV** BRIDE S



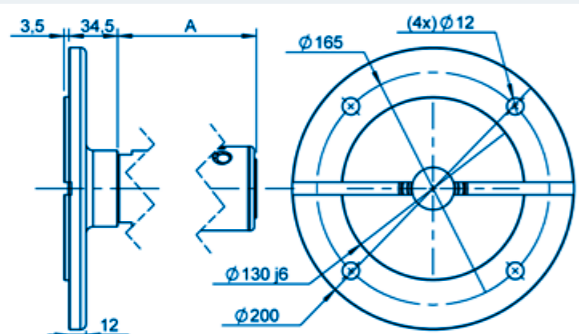
**GRUPE IV** BRIDE U



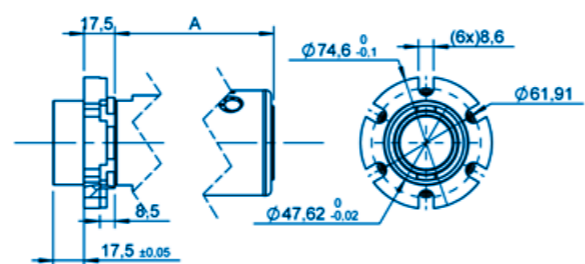
**GRUPE IV** BRIDE V



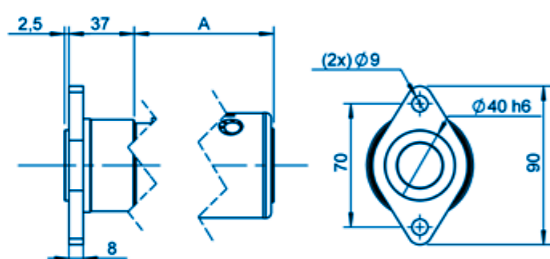
**GRUPE IV** BRIDE W - IEC80B5



**GRUPE IV** BRIDE Y



**GRUPE IV** BRIDE Z

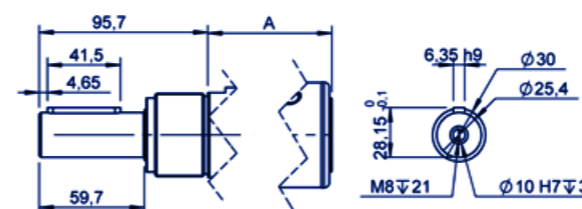


Vous n'avez pas trouvé ce qu'il vous faut ?

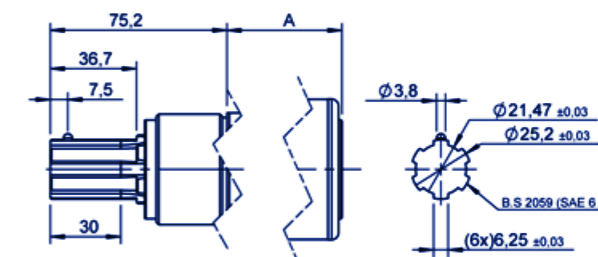
Contactez-nous !

TYPE D'ARBRE **GRUPE IV** (1/3) XTH 05 XTH 07 XTS 08 XTH 08 XTS 10 XTH 10 XTS 20 XTS 25

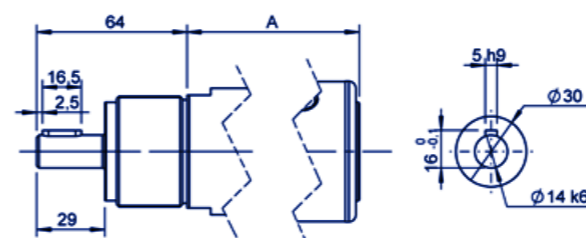
**GRUPE IV** ARBRE 007 - CLAVETÉ Ø1"



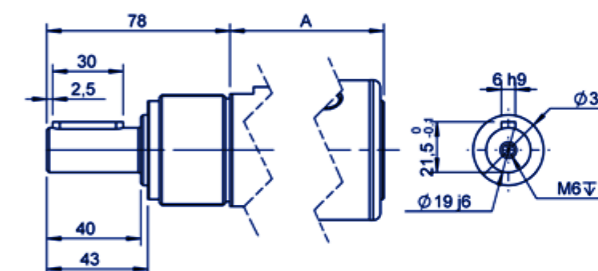
**GRUPE IV** ARBRE 019 - CANNELÉ ARP



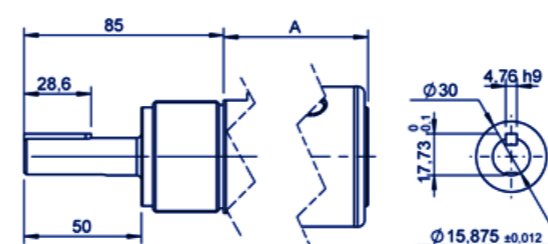
**GRUPE IV** ARBRE C11 - CLAVETÉ Ø14 - IEC71B5 - IEC71B14



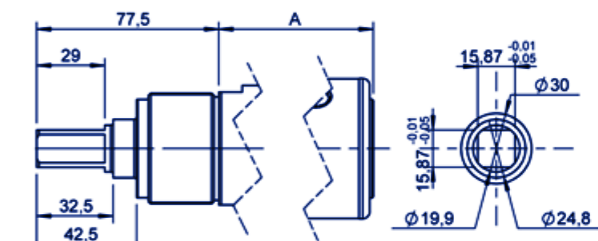
**GRUPE IV** ARBRE C12 - CLAVETÉ Ø19 - IEC80B5 - IEC80B14



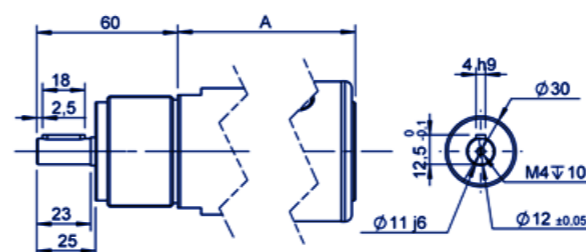
**GRUPE IV** ARBRE C15 - CLAVETÉ Ø5/8"



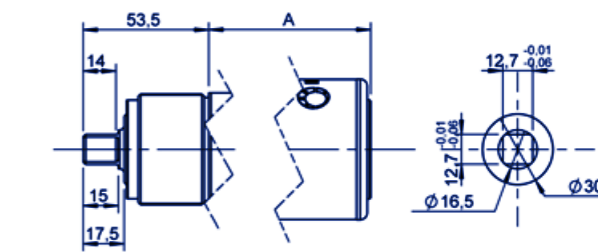
**GRUPE IV** ARBRE C16 - CARRÉ Ø5/8"



**GRUPE IV** ARBRE C19 - CLAVETÉ Ø11 - IEC63B14



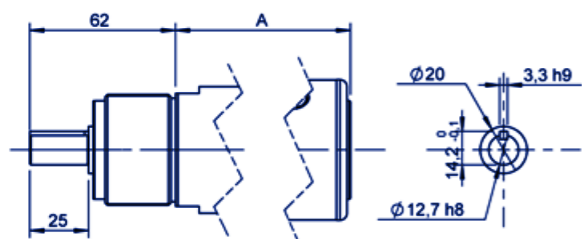
**GRUPE IV** ARBRE CA1 - CARRÉ Ø1/2"



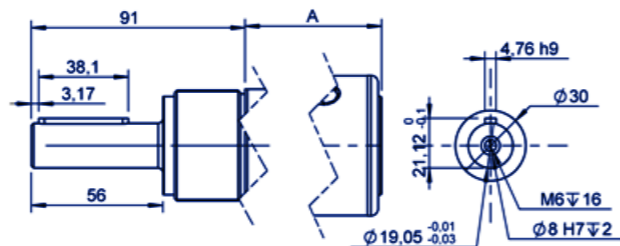
TYPE D'ARBRE **GRUPE IV** (2/3)

- XTH 05 XTH 07 XTS 08 XTH 08 XTS 10 XTH 10 XTS 20 XTS 25

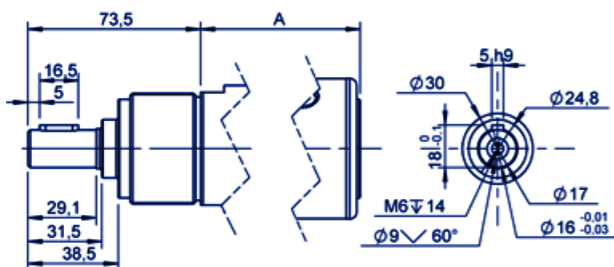
**GRUPE IV** ARBRE CL1 - CLAVETÉ Ø1/2"



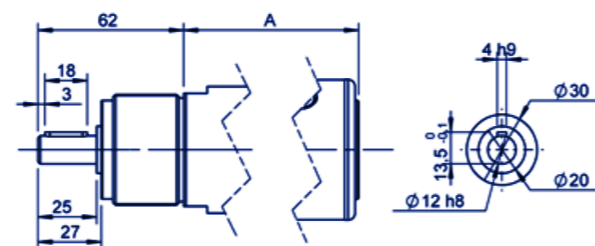
**GRUPE IV** ARBRE CL2 - CLAVETÉ Ø3/4"



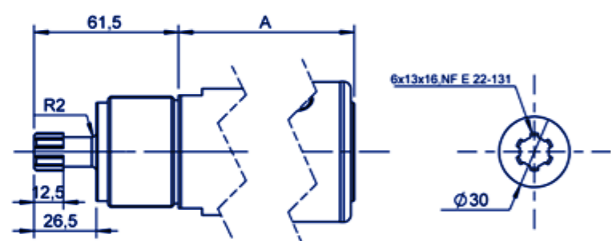
**GRUPE IV** ARBRE CL6 - CLAVETÉ Ø16



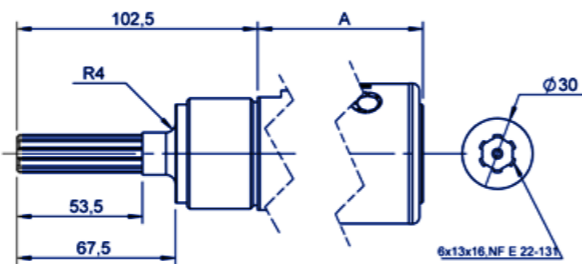
**GRUPE IV** ARBRE CL9 - CLAVETÉ Ø12



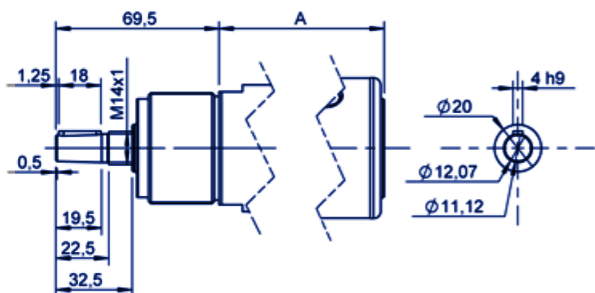
**GRUPE IV** ARBRE CNC - CANNELÉ COURT



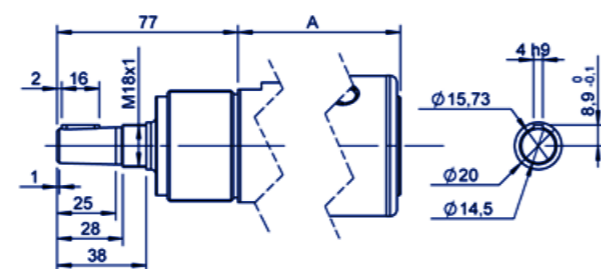
**GRUPE IV** ARBRE CNL - CANNELÉ LONG



**GRUPE IV** ARBRE CONIQUE B12



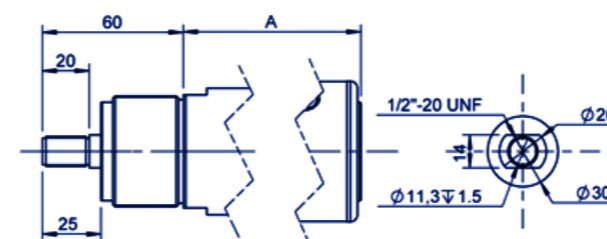
**GRUPE IV** ARBRE CONIQUE B16



TYPE D'ARBRE **GRUPE IV** (3/3)

- XTH 05 XTH 07 XTS 08 XTH 08 XTS 10 XTH 10 XTS 20 XTS 25

**GRUPE IV** ARBRE F11 - FILETÉ Ø1/2"

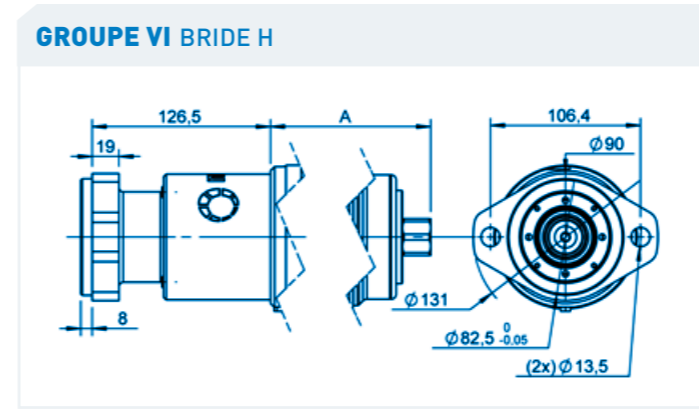
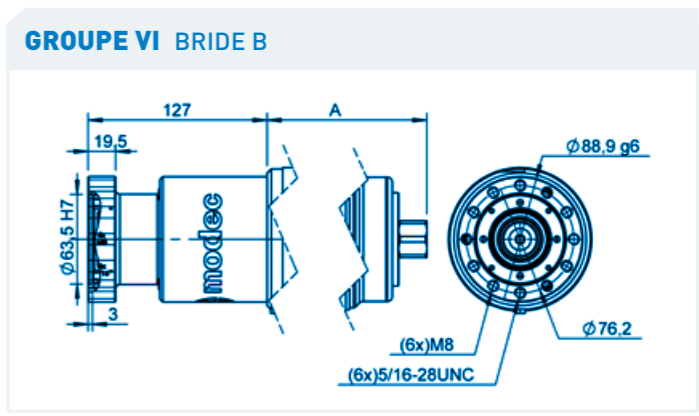
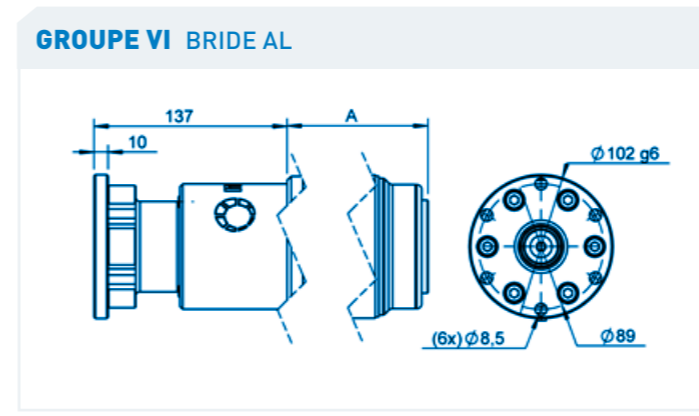
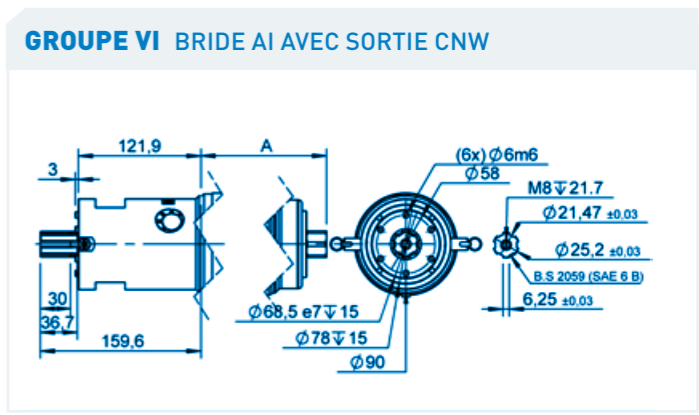
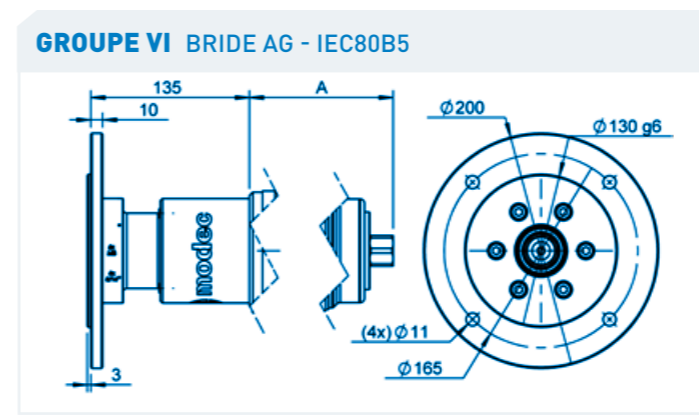
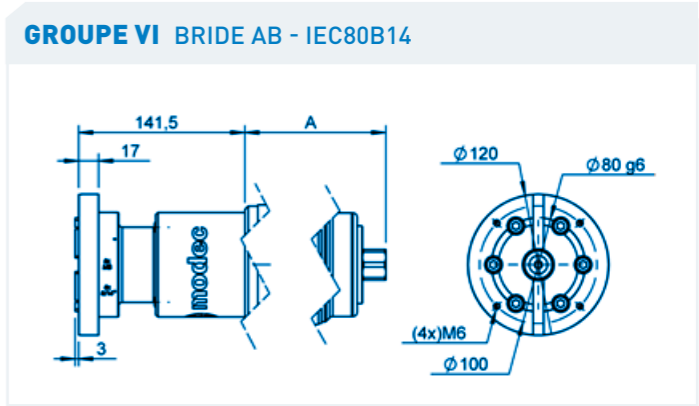
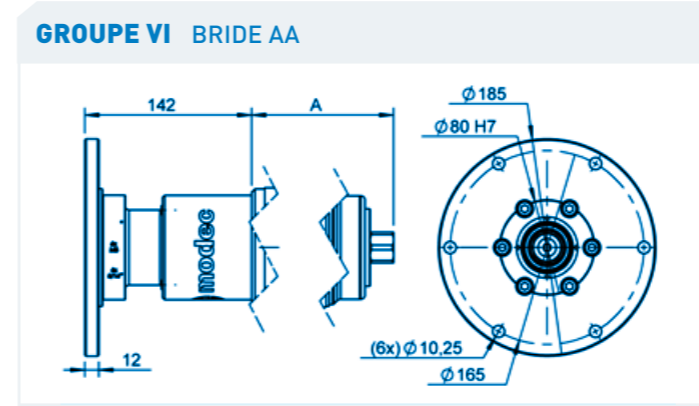


Vous n'avez pas trouvé ce qu'il vous faut ?

Contactez-nous !

TYPE DE BRIDE **GROUPE VI**

- XTZ 08
- XTZ 10
- XTZ 20
- XTZ 25
- XTS 30



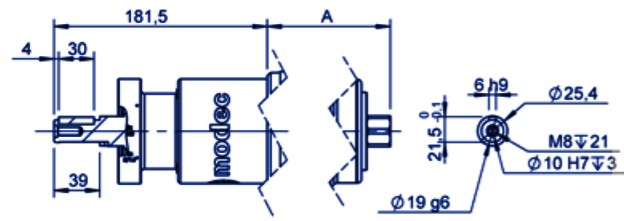
Vous n'avez pas trouvé  
ce qu'il vous faut ?

Contactez-nous !

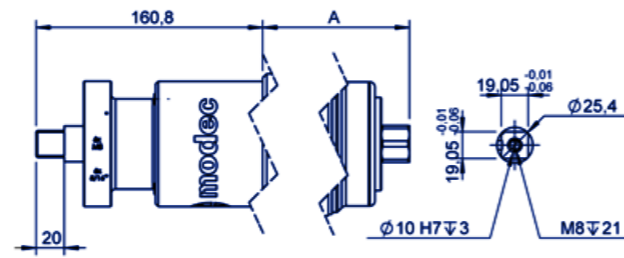
TYPE D'ARBRE **GROUPE VI**

- XTZ 08
- XTZ 10
- XTZ 20
- XTZ 25
- XTS 30

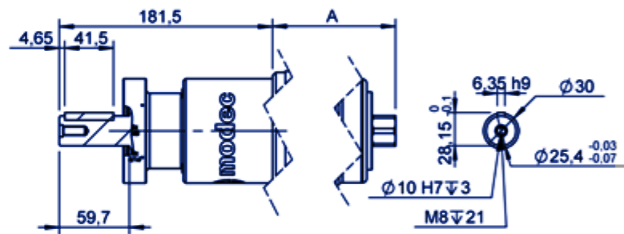
**GROUPE VI** ARBRE 003 - CLAVETÉ Ø19 - IEC 80B14 - IEC 80B5



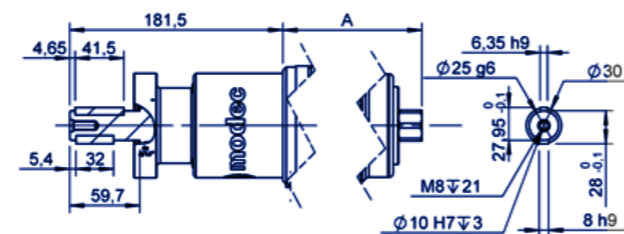
**GROUPE VI** ARBRE CA1 - CARRÉ 3/4"



**GROUPE VI** ARBRE CL2 - CLAVETÉ Ø1"



**GROUPE VI** ARBRE CL4 - CLAVETÉ Ø25



Vous n'avez pas trouvé  
ce qu'il vous faut ?

Contactez-nous !

